



SPECIFICATIONS	
Output Torque	540Nm
Engine	11hp Petrol
Length	2150mm
Width	1150mm
Height	800mm
Weight	250kg

The CBS 680 Bulldog winch has been designed to provide a compact, transportable unit for overhead line stringing work. The self-contained winch is powered by an 11hp petrol engine and the precise control required is provided by the hydraulic circuit.

Designed to tow behind even small vehicles, the Bulldog winch is lightweight and can be easily positioned by one man. Operational stability is provided by ground anchors on the tow bar, or by employing the towing vehicle as an anchor.

The C-680 Bulldog is a British Universal Winch designed to meet the needs of overhead line engineers. The various options permit use on aerial bundle (ABC), Copper, Aluminium and ACSR Conductors.

ORDERING INFORMATION	
C-680	Bulldog Overhead Winch
C-A1-680-27	Split Drum for retrieving conductor
C-821-02	700mm diameter drum fitted with 400m of 8mm Paraline Rope





The CBS 821 Universal Winch offers the constant pulling tension of a double capstan drive and the flexibility of a direct drive drum in one machine.

The winch employs a powerful petrol engine mounted with associated hydraulics on a sturdy trailer unit. Precise hydraulic controls allow easy operation through one fail-safe lever.

Ideally suited for ABC erection, 11/33kV stringing work, conductor recovery, and underground cable handling.

SPECIFICATIONS

Speed	0-30m/min from capstans 0-100m/min drum drive when connected to capstan drive shaft
Drive	Fixed displacement pump and motor through double capstan drive module
Controls	Fail-safe, bi-directional section, creep & inching facility, and operator adjustable load limiting control
Rope Layer	Semi-automatic
Load Indicator	Calibrated gauge dial read out in kg with adjustable limit control
Hydraulic Circuit	Open circuit with double filtration protection
Length	2844mm (Overall)
Width	1420mm
Height	1480mm (With cover)
Weight	455kg (Unladen)
Rope Drum - Empty	22kg
Split Drum	23kg
Frame & Cover	50kg
400m Drum	27kg
600m Drum	40kg

ORDERING INFORMATION

C-821-01	Hydraulic Universal Winch
----------	---------------------------



OPTIONAL EXTRAS

C-821-02	700mm diameter drum fitted with 400m of 8mm Paraline Rope
C-821-03	700mm diameter drum fitted with 600m of 8mm Paraline Rope
C-A1-680-27	Split Drum
C-821-14	Waterproof cover



SPECIFICATIONS	
Output Torque	615Nm / Avg. Tension 300kg
Speed Control	Fail-safe, bi-directional section, creep and inching facility

ORDERING INFORMATION	
C-825-01	Pole Mounted Hydraulic Winch with layering arm
C-1204-1	Hydraulic power pack with 7m hoses

OPTIONAL EXTRAS	
C-821-02	700mm diameter drum fitted with 400m of 8mm Paraline Rope
C-821-03	700mm diameter drum fitted with 600m of Paraline Rope
C-A1-680-27	Split drum for retrieving old conductor
C-825-07	Split drum (Outboard type)
C-825-06	Grounding frame and anchor rods
C-825-09	Carrying handle for hydraulic motor

Designed to provide a fully portable winching system, by breaking down into easily transportable modules.

Ideally suited for overhead line stringing work such as ABC conductors, bare conductors or re-conductoring projects, it provides a flexible system suitable where access is restricted and ground disturbance is undesirable.

The winch can be pole mounted or ground mounted using the optional frame. The C-825 Hydraulic Winch comprises of a strong lightweight pole mounting frame with securing chains and incorporates a hydraulic drive and control lever.

HYDRAULIC POWER PACK



SPECIFICATIONS	
Length	720mm
Width	530mm
Height	615mm
Weight	66kg
Hydraulic Tank Capacity	5 Litres

This unit is powered by an air-cooled, 8hp petrol driven engine, delivering 20 litres/min at a working pressure of 138 bar from the hydraulic circuit. The circuit is protected with return line and suction filters. CE approved.



Designed to give reliable, flexible winching system to meet all 11/33kV work, together with some 66kV and 132kV maintenance tasks.

The powerful winch is mounted on a robust steel chassis with a single axle trailer facility for site manoeuvrability. The engine, fitted with electric start, powers the drive spindle of the drum via a gearbox and hydraulic circuit designed to achieve smooth control of the winding operation.

Powered hydraulic drum lifting device and stabilising jacks enable safe drum handling.

OPTIONAL EXTRAS

C-780-05	Triple drum fitted with 1500m of 8mm Paraline Rope - 3 off required
C-1002-10-F	Weatherproof cover
C-780-21	Torque arm assembly with locking collar for use with wooden drums
C-780-07	Triple split drum for old conductors - 3 off required
C-780-06-02	Single steel split drum for old conductors

SPECIFICATIONS

Capacity	3 Tonne @ 250mm diameter
Engine	Diesel or Petrol
Rope Speed	0-100m/min (Adjustable)
Rope Drums	See Optional Extras
Max Drum Diameter	1100mm
Max Drum Width	1075mm (Using solid wooden drum)
Length	3100mm
Width	2300mm
Height	1400mm (Without drums)
Weight	1100kg (Net)

ORDERING INFORMATION

C-780-30	Overhead Line Construction Winch 3 Tonne, Petrol engine
C-780-30-01	Overhead Line Construction Winch 3 Tonne, Diesel engine
C-780-30-01-C	Overhead Line Construction Winch 3 Tonne, Diesel Engine with oil cooler





Designed to give reliable, flexible winching system to meet all 11/33kV work, together with some 66kV and 132kV maintenance requirements, the system employs a range of drums to suit particular applications.

The powerful winch is mounted on a robust steel chassis with a single axle trailer facility for site manoeuvrability. The engine, fitted with electric start, powers the drive spindle of the drum via a gearbox and hydraulic circuit which is designed to achieve smooth, variable control of the winding operation in either direction.

The powered hydraulic drum lifting device, together with hydraulic stabilising jacks, provides safe drum handling. Hydraulic layering device fitted as standard.

OPTIONAL EXTRAS	
C-780-24	Triple drum fitted with 1200m of 10mm Paraline Rope - 3 off required
C-1002-10-F	Weatherproof cover
C-780-21	Torque arm assembly with locking collar for use with wooden drums
C-780-07	Triple split drum for old conductors - 3 off required
C-780-06-02	Single steel split drum for old conductors

SPECIFICATIONS	
Capacity	4 Tonne @ 250mm diameter
Engine	Diesel or Petrol
Rope Speed	0-100m/min (Adjustable)
Rope Drums	See Optional Extras
Max Drum Diameter	1100mm
Max Drum Width	1075mm (Using solid wooden drum)
Length	3100mm
Width	2300mm
Height	1400mm (Without drums)
Weight	1100kg (Net)

ORDERING INFORMATION	
C-780-40	Overhead Line Construction Winch 4 Tonne, Petrol engine
C-780-40-01	Overhead Line Construction Winch 4 Tonne, Diesel engine
C-780-40-01-C	Overhead Line Construction Winch 4 Tonne, Diesel engine with hydraulic oil cooler





The TEW25H-01 winch has been designed to comply with all the relevant safety requirements for lifting loads. Two fully automatic, fail safe braking systems are incorporated into the unit.

The first is situated directly in the transmission line and functions every time the winch controls are operated. The second is mounted in direct contact with the rope drum and is controlled by a sensing system acting on the main drive chain and the hydraulic oil pressure. In the unlikely event that the chain should fail, or all hydraulic pressure is lost, then this second brake would automatically apply and hold the load.



SPECIFICATIONS	
Max Load	2500kg
Speed: Bare Drum	5.2m/min
Speed: Full Drum	12.2m/min
Rope Capacity	13mm x 500m dia steel
	14mm x 450m dia steel
	16mm x 340m dia steel
	19mm x 220m dia steel
Engine	Air cooled Diesel. Max 13hp @ 3000rpm
Controls	Single dead-man control for raise/lower. Separate lever for fine speed adjustment
Transmission	Variable output pump, positive displacement motor, chain drive to sliding pinion for free drum facility, final drive via ring gear on rope drum
Safety	Primary brakes - spring applied, pressure released. Secondary brakes - disc brake type. Fold down spade anchor. Front and rear props. Shackle points on frame
Length	3015mm
Width	1410mm
Height	2100mm
Weight	

ORDERING INFORMATION	
W1-TEW25H-01	Tower Erection Winch 2.5 Tonne



Hydraulic winch designed to provide reliable and safe lifting operations for tower and mast erection for the electricity or telecommunications industries. Winching is controlled via a proportional hydraulic valve giving the operator precise control over the load when needed or high speed if necessary.

A variable displacement pump automatically regulates flow to prevent engine stall, leaving the operator to concentrate on the winching operation. A secondary 500kg capstan operated via a footswitch is fitted to aid the positioning of load if necessary.

Power is supplied by a 4 cylinder water cooled Perkins diesel engine fitted in an acoustic enclosure for reduced noise. Power on demand is also utilised to further reduce noise levels when the winch is not operating.



SPECIFICATIONS	
Max Load	5000kg
Max Capstan Load	500kg
Speed: Empty	10m/min
Speed: Full Drum	38m/min
Rope Capacity	20mm x 300m dia steel
Engine	Water cooled 4 cylinder quiet Diesel. Max 21kW
Winch Controls	Single dead-man proportional control for raise/lower
Capstan Controls	High/low speed valve operated via electric footswitch
Transmission	Variable displacement pump, positive displacement motor with gearbox mounted directly to winch drum
Brakes	Spring applied, pressure released mounted directly onto drum
Length	3313mm
Width	2044mm
Height	2200mm
Unladen Weight	2100kg (Without rope)
Gross Weight	2700kg

ORDERING INFORMATION

W1-TEW50H-01	Tower Erection Winch 5 Tonne
--------------	------------------------------





The C-1210 Single Capstan Winch has been designed to provide a light and powerful universal winch. Suitable for hoisting loads up poles or transmission towers or pulling cables and conductors.

The optional rope locking device eliminates the need to tie off the rope. A remote foot control switch operates the 115 volt electrically powered winch.



OPTIONAL EXTRAS

D-918-14-100-01-F	100m of 14mm 3 strand pre-stretched rope with 50mm hard eyes
D-918-14-100-F	100m of 14mm 3 strand pre-stretched rope with soft eyes
C-GEV-KIGE-02-110-F	110V 2600W generator

SPECIFICATIONS

Capacity	450kg
Rope Speed	12m/min
Capstan Diameter	140mm
Length	510mm
Width	165mm
Weight	16kg
Power Supply	115V AC

ORDERING INFORMATION

C-1210	Single Capstan Electric Winch with foot control, steel box, rope lock device, and universal bracket assembly
--------	--

SPARES

C-1210-01-F	Steel storage box
C-1210-02-F	Rope lock device
C-1210-03-F	Universal bracket
C-1210-AS1020-S	Foot switch assembly





The C-1210-500-1 Petrol Capstan Winch is lightweight at just 8.5kg, therefore enabling easy handling and smooth running. The unit is designed for the operator to use from a safe distance. By gently pulling the rope of the throttle control unit, the load is pulled.

Fitted with a rope brake that ensures safety during operation, as soon as the rope is release by the operator, the winch will stop, preventing unintentional sliding back.

ORDERING INFORMATION

C-1210-500-1 Petrol Capstan Winch

SPECIFICATIONS

Capacity	500kg
Length	33cm
Width	29cm
Height	26cm
Weight (no rope)	8.5kg
Speed	Max. 12m/min



OPTIONAL EXTRAS

C-1210-500-2 Vehicle Tow Hitch Attachment



MOTOR DETAILS

Type	Air-cooled, 4-stroke
Power	1 kw/1.3 hp
Cylinder Capacity	35.8cm ³
Motor Speed	Max. 7000rpm
Tank Capacity	0.58ltr
Noise Level	106dB (A)

The C-1035 Lightweight Capstan Winch is designed for use over manholes.

Powered by a 5.5HP Honda engine through a right angle gearbox, the C-1035-05 offers a pulling capacity of 500kg. The C-1035-10 has an 8HP Honda Engine with a pulling capacity of 1000kg.



ORDERING INFORMATION

C-1035-05-0001	Lightweight Capstan Winch - 500kg
C-1035-10	Lightweight Capstan Winch - 1000kg



OPTIONAL EXTRAS

D-918-14-100-F	100m of 14mm 3 strand pre-stretched rope with soft eyes
D-918-14-200-F	200m of 14mm 3 strand pre-stretched rope with soft eyes

SPECIFICATIONS

C-1035-05-0001

C-1035-10

SPECIFICATIONS	C-1035-05-0001	C-1035-10
Capacity	500kg	1000kg
Engine	5.5HP	8HP
Length	1100mm	1250mm
Width	500mm	500mm
Height	600mm	600mm
Weight	69kg	99kg



The C-1045 winch has been designed to meet the requirements of installing telecommunication cables, employing an 813mm diameter single capstan to impart a controlled force to the pulling rope or cable.

The single capstan allows the winch to be placed at the mid point of a section to assist in the pull, thus enabling longer pulls to be achieved. The C-1045 has a rope take up drum, which is driven independently via a hydraulic motor.

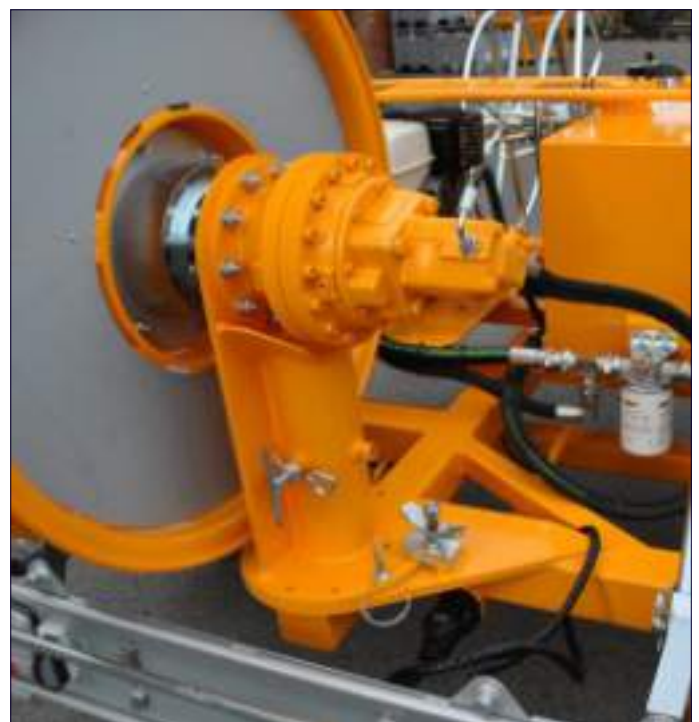
The take up drum has a detachable side, which allows the rope on the drum to be removed in a tidy coil and can be declutched from the drive to allow the rope to be pulled out manually when threading. The winch is powered by a 13hp petrol engine that drives a fixed displacement hydraulic pump, which in turn drives the low speed, high torque, hydraulic motor.

The motor drives the capstan through an epicyclical gearbox. The pulling tension is mounted on a dial read out, allowing the operator to monitor the pull. Tension is adjustable from 0 – 500kg.



SPECIFICATIONS	
Engine	13hp
Capacity	500kg
Max Rope Speed	50m/min
Capstan Diameter	813mm
Adjustable Tension	0-500kg
Min Length	3200mm
Max Length	3436mm
Width	1750mm
Height	1440mm
Weight	580kg

ORDERING INFORMATION	
C-1045-001-R4	Pull & Assist Winch





The C-1350 Cable Pusher has been designed to assist the laying of electrical cables or cylindrical elements. The unit has a profiled drive system to grip the cable, with a load applicator of adjustable upper rollers.

The drive system is hydraulic, and is powered by a C-1203- F Portable Hydraulic Power Pack.

ORDERING INFORMATION

C-1350	Cable Pusher
C-1350-01	Control Valve Module with 2m hydraulic hoses

SPECIFICATIONS

Cable Size	30-150mm outside diameter
Length	1390mm
Width	500mm
Height	770mm
Weight	200kg
Max Push	700kg
Max Speed	10m/min
Controls	Single lever for push/pull operations with variable speed control
Drive System	Hydraulic
Recommended	18ltr/min @ 60 bar

C-1203 HYDRAULIC POWER PACK



ORDERING INFORMATION

C-1203-F	Hydraulic Power Pack with trolley
----------	-----------------------------------

This unit is powered by an air-cooled, 8hp Honda GX240 petrol engine, delivering the recommended 18 litres/min at a working pressure of 60 bar for the C-1350 Cable Pusher.

SPECIFICATIONS

Length	720mm
Width	530mm
Height	615mm
Weight	66kg
Hydraulic Tank Capacity	5 Litres



The C-751 Drum Trailer comes in three versions, and provides a compact and secure method of drum transportation. Manufactured in strong steel sections, it incorporates manually operated hydraulic lifting of drums.

There is, as an option, the facility to provide a drum braking arrangement, this is particularly useful when pulling the conductor during conductor stringing operations. Trailer braking is of the overrun type and is supplied to EC Specification with auto-reverse as standard. Lights are also fitted as standard. All versions are IVA approved.

FEATURES

Lighting	Stop, tail, direction, indicators with connectors
Suspension	Swinging arm with aeon suspension
Braking	Drum brakes to EC specification with hand brake
Lifting Arrangement	Hand operated hydraulic pump with individual valves for each ram
Towing Eye	50mm diameter fitted as standard

DRUM HANDLING

ORDERING INFORMATION

C-751-10	C-751 Drum Trailer - 1000kg
C-751-13-01	C-751 Drum Trailer - 1300kg
C-751-16	C-751 Drum Trailer - 1600kg

SPECIFICATIONS	C-751-10	C-751-13-01	C-751-16
Max Drum Weight	1000kg	1300kg	1630kg
Max Drum Width	1050mm	1100mm	1050mm
Min Drum Diameter	1000mm	800mm	900mm
Max Drum Diameter	1800mm	2000mm	2185mm
Tyres	185 R13	195 R14 08	215/75R 16C
Length	2700mm	3172mm	3419mm
Width	1950mm	2140mm	2233mm
Height (No Drum)	1350mm	1646mm	1855mm
Weight	350kg	475kg	680kg
Spindle Diameter	63mm	63.5mm	70mm



A uniquely versatile tool. A single operator can independently control the tension of all three conductors.

Ideally suited to the needs of cost conscious installation crews who require fast turnarounds and maximum productivity. Supplied with a full set of detachable stabilisers to maximise trailer stability during tensioning.

Fitted with smooth operating disk brake for conductor control.

- ◆ Low centre of gravity
- ◆ Off set drums to enhance stability during towing
- ◆ Independent disc braking of each drum
- ◆ Standard drum drive pin location
- ◆ Convenient storage area for stabilisers (located in base frame)

SPECIFICATIONS	
Length	4710mm
Width	1768mm
Height	1777mm
Weight (Net)	1100kg
Weight (Gross)	3100kg
Max Drum Diameter	1220mm
Max Drum Width	830mm
Braking Capacity	60kgm
Drum Hole	65mm / 80mm -Specify when ordering
Max Drum Weight	3x 650kg

ORDERING INFORMATION	
C-1290-05	Triple Braked Drum Trailer
D-804	Ground Anchor Set - 2x required





D-496-01 roll on Drum Stand allows a range of drums to be accommodated to suit the majority of applications. Manufactured in steel, with ball bearings in the rollers, the stand is suitable for pulling off cable from the drum.

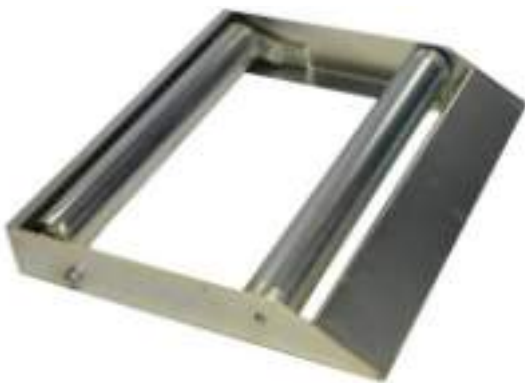
ORDERING INFORMATION

D-496-01	Roll on Drum Stand
----------	--------------------

SPECIFICATIONS

Max Drum Weight	1500kg
Min Drum Diameter	300mm
Max Drum Diameter	1500mm
Drum Width	Adjustable
Length	900mm
Width	200mm
Height	100mm
Weight	46kg

D-998 ROLL ON DRUM STAND



Manufactured in steel, with sleeved bearings in the rollers, this portable lightweight unit is particularly suitable for small to medium drum sizes.

ORDERING INFORMATION

D-998	Roll on Drum Stand
-------	--------------------

SPECIFICATIONS

Max Drum Weight	500kg
Min Drum Diameter	300mm
Max Drum Diameter	600mm
Drum Width	600mm
Length	550mm
Width	630mm
Height	90mm
Weight	14kg



Manufactured in a sturdy steel construction, with heavy-duty Acme screw threads to provide safe lifting.

SPECIFICATIONS	D-246-1-F	D-247-F	D-248-1-F
Length	300mm	460mm	600mm
Width	300mm	300mm	300mm
Width	570mm	710mm	835mm
Weight	19kg	23kg	36kg
Lifting Capacity (Pair)	3 Tonne	6 Tonne	8 Tonne

ORDERING INFORMATION

D-246-1-F	3 Tonne Drum Jack - 2x required	D-248-1-F	8 Tonne Drum Jack - 2x required
D-247-F	6 Tonne Drum Jack - 2x required	D-454-1-F	Drum Jack Steady Base

CABLE DRUM SPINDLES



ORDERING INFORMATION		DIAMETER	LENGTH	WEIGHT
D-249	50x1200mm Spindle	50mm	1200mm	19.0kg
D-249-03	50x1500mm Spindle	50mm	1500mm	23.4kg
D-249-04	50x1830mm Spindle	50mm	1830mm	29.0kg
D-250	75x1830mm Spindle	75mm	1830mm	66.0kg
D-250-02	75x2000mm Spindle	75mm	2000mm	73.0kg
D-250-07	75x2600mm Spindle	75mm	2600mm	92.5kg
D-251	90x2300mm Spindle	90mm	2300mm	115kg
D-251-02	90x2500mm Spindle	90mm	2500mm	125.0kg
D-251-03	90x3000mm Spindle	90mm	3000mm	150kg



The CBS D-684 drum stand is compact in size. Each side is fitted with wheels to allow for easy transportation.

Drum lifting is achieved with two handoperated hydraulic jacks.

An adjustable band brake provides controlled cable tensioning.

ORDERING INFORMATION

D-684-2-2	2000kg Braked Drum Stand
D-684-2-4	4000kg Braked Drum Stand

Specifications	D-684-2-2	D-684-2-4
Max Drum Weight	2000kg	4000kg
Max Drum Width	1640mm	1640mm
Min Drum Diameter	1500mm	1500mm
Max Drum Diameter	2400mm	2200mm
Spindle Diameter	73mm	73mm
Length	1790mm	1790mm
Width Per Side	462mm	462mm
Height	610mm	610mm
Weight	254kg	247kg



D-711 BRAKED DRUM STAND



The CBS D-711 Braked Drum Stand has been designed in sections for ease of transportation and is simple to assemble. The stand incorporates a band brake to provide smooth cable tensioning. Two hydraulic pumps provide drum lifting to a suitable working height.

ORDERING INFORMATION

D-711 Braked Drum Stand - 1600x1000mm

SPECIFICATIONS	D-711
Max Drum Weight	1500kg
Max Drum Width	1000mm
Min Drum Diameter	1000mm
Max Drum Diameter	1600mm
Spindle Diameter	54mm
Length	1640mm
Width	1480mm
Height	630mm
Weight	122kg

D-1156-01 CABLE DRUM STAND



Designed in sections for ease of transportation and simply slots together to form a rigid and stable drum stand. The shaft is fitted with bearings and drum location collars are also included. Two hydraulic jacks provide drum lifting.

ORDERING INFORMATION

D-1156-01 Cable Drum Stand

SPECIFICATIONS	
Max Drum Weight	500kg
Min Drum Diameter	850mm
Max Drum Diameter	1200mm
Max Drum Width	800mm
Length	1278mm
Width	1270mm
Height	615mm
Spindle Diameter	51mm
Weight	98kg



Lightweight hydraulic drum jacks, which are almost indispensable for use in the cable yard. Versatile and easily adjustable within seconds to accommodate a vast range of drums.

Excellent all-round stability, fitted with wheels to be easily moved by one person. Complete with spindle and collars.

SPECIFICATIONS	D-536-F	D-536-01-F	D-536-02-F
Min Drum Diameter	800mm	880mm	1080mm
Max Drum Diameter	2500mm	3000mm	3500mm
Weight	106kg	121kg	180kg
Spindle Weight	30kg	44kg	53kg
Lifting Capacity	3 Tonne	6 Tonne	10 Tonne

ORDERING INFORMATION	
D-536-F	3 Tonne Hydraulic Drum Jack
D-536-01-F	6 Tonne Hydraulic Drum Jack
D-536-02-F	10 Tonne Hydraulic Drum Jack

D-692 DRUM CRADLE



This universal drum handling aid finds use in drum storage yards for lifting drums for cable removal or on site for pulling out conductors.

SPECIFICATIONS	D-692	D-692-01
Max Drum Diameter	1500mm	1500mm
Max Drum Width	800mm	1000mm
Length	1850mm	1850mm
Width	1050mm	1300mm
Height	865mm	865mm
Weight	32kg	35kg
SWL	1500kg	1500kg

ORDERING INFORMATION			
D-692	Drum Cradle - 800mm Wide	D-692-01	Drum Cradle - 1000mm Wide



The cable blowing machine, comprising an air box and cable pusher, has been designed to provide an effective and safe method of fibre optic cable installation.

The system installs fibre optic cable of 6mm (0.25") to 32mm (1.25") overall diameter, at speeds up to 90m/min (300ft/min), into pre-installed ducts. The electronic monitoring system provides read out of speed and distance, gives protection against duct obstructions and includes an emergency stop facility.

The system is mounted on an anti-corrosion treated, height adjustable, wheeled tubular steel trolley. This allows the unit to be wheeled around on site.

The C-1203 hydraulic petrol driven power pack provides power. The unit is CE approved.

CONTROL PANEL FEATURES

- ◆ Power on/off button
- ◆ Emergency stop button
- ◆ Reset button
- ◆ Combined length counter recording in metres (feet) and cable speed read out in metres/min (feet/min)
- ◆ Hydraulic pressure read out dial
- ◆ Air pressure read out dial
- ◆ Hydraulic on/off control valve
- ◆ Adjustable speed control for drive belts
- ◆ Air supply control on/off with automatic exhaust function

AIR BOX FEATURES

- ◆ Manufactured in aluminium
- ◆ Range taking of cables from 6mm – 32mm (0.25"-1.25") by means of interchangeable collets with double cable sealing arrangement
- ◆ Duct sealing at mouth of air box
- ◆ Duct gripping facility designed to obviate duct crushing and distortion
- ◆ All seals, except cable seals, have a common diameter cord
- ◆ Upper section of air box is retained
- ◆ Air box aligned is adjustable for varying cable diameters
- ◆ No tools are required to split air box for insertion of cable and duct
- ◆ On/off air control valve with automatic air exhaust from duct when in "off" position

ORDERING INFORMATION

C-1250-08

Tornado Plus Cable Blowing Machine

- ◆ Front mounted wheels for ease of manoeuvrability
- ◆ Lightweight anti-corrosion treated tubular steel frame
- ◆ Adjustable frame allowing unit to be tilted up to 30°, reducing bending of duct and cable
- ◆ Adjustable rear legs for uneven terrain

CABLE FEEDER FEATURES

- ◆ Manufactured in cast aluminium
- ◆ Unit lifts and splits to allow insertion of cable between drive belts
- ◆ Drive belts are profiled polyurethane, moulded
- ◆ Belt tension can be set by means of adjustable chain drive tensioners fitted to the side of the unit
- ◆ System relief valve fitted as standard



- ◆ 3mm Allen Key
- ◆ 4mm Allen Key
- ◆ 5mm Allen Key
- ◆ 6mm Allen Key
- ◆ 3mm dia. Cord x 2.5 metres long
- ◆ Silicone Grease
- ◆ Pliers 150mm
- ◆ Screwdriver 150mm (slot)
- ◆ Knife
- ◆ 13-17mm A/F Spanner
- ◆ Battery Charger
- ◆ Battery Charge Indicator



In order to customise your new “Tornado” to your application, we ask that you pick one of each from the list below, the Duct Clamp Collet (A), the Duct Seal Collet (B), the Cable Collet Assy (C) and the In Feed Cable Collet (D), the Cable Seals (E) and the Cable Seal Plug (F). When ordering, please have Tube and Cable dimensions available.



A. DUCT CLAMP COLLET

C-1258-0200-25	25mm Duct Outside Diameter
C-1258-0200-32	32mm Duct Outside Diameter
C-1258-0200-38	38mm Duct Outside Diameter
C-1258-0200-40	40mm Duct Outside Diameter
C-1258-0200-50	50mm Duct Outside Diameter



B. DUCT SEAL COLLET

C-1257-0202-25	25mm Duct Outside Diameter
C-1257-0202-32	32mm Duct Outside Diameter
C-1257-0202-38	38mm Duct Outside Diameter
C-1257-0202-40	40mm Duct Outside Diameter
C-1257-0202-50	50mm Duct Outside Diameter



CABLE DIAMETER	C. CABLE COLLET ASSEMBLY	D. IN-FEED CABLE COLLET
6-9mm	C-1256-0103-06-09	C-1256-0104-06-09
9-12mm	C-1256-0103-09-12	C-1256-0104-09-12
12-16mm	C-1256-0103-12-16	C-1256-0103-12-16
16-20mm	C-1256-0103-16-20	C-1256-0103-16-20
20-24mm	C-1256-0103-20-24	C-1256-0103-20-24
24-28mm	C-1256-0103-24-28	C-1256-0103-24-28
28-32mm	C-1256-0103-28-32	C-1256-0103-28-32



E. CABLE SEALS (10 PACK)

C-1255-0208-06-07.5	6-7.5mm Cable Diameter
C-1255-0208-07.5-09	7.5-9mm Cable Diameter
C-1255-0208-09-10.5	9-10.5mm Cable Diameter
C-1255-0208-10.5-12	10.5-12mm Cable Diameter
C-1255-0208-12-14-F	12-14mm Cable Diameter
C-1255-0208-14-16-F	14-16mm Cable Diameter
C-1255-0208-16-18-F	16-18mm Cable Diameter
C-1255-0208-18-20-F	18-20mm Cable Diameter
C-1255-0208-20-22-F	20-22mm Cable Diameter
C-1255-0208-22-24-F	22-24mm Cable Diameter
C-1255-0208-24-26-F	24-26mm Cable Diameter
C-1255-0208-26-28-F	26-28mm Cable Diameter
C-1255-0208-28-30-F	28-30mm Cable Diameter
C-1255-0208-30-32-F	30-32mm Cable Diameter

F. CABLE SEAL PLUGS

C-1256-0206-07.5	6-7.5mm Cable Diameter
C-1256-0206-09	7.5-9mm Cable Diameter
C-1256-0206-10.5	9-10.5mm Cable Diameter
C-1256-0206-12	10.5-12mm Cable Diameter
C-1256-0206-14	12-14mm Cable Diameter
C-1256-0206-16	14-16mm Cable Diameter
C-1256-0206-18	16-18mm Cable Diameter
C-1256-0206-20	18-20mm Cable Diameter
C-1256-0206-22	20-22mm Cable Diameter
C-1256-0206-24	22-24mm Cable Diameter
C-1256-0206-26	24-26mm Cable Diameter
C-1256-0206-28	26-28mm Cable Diameter
C-1256-0206-30	28-30mm Cable Diameter
C-1256-0206-32	30-32mm Cable Diameter





A trolley mounted hydraulic power pack with pre-set internal system protection relief valve and quick release connectors. The unit is powered by an air-cooled, 8hp Honda GX240 petrol engine, delivering 15 litres/min at a working pressure of 115 bar from the hydraulic circuit.

ORDERING INFORMATION

C-1203-F Hydraulic Power Pack with trolley

SPECIFICATIONS

Length	720mm
Width	530mm
Height	615mm
Weight	66kg
Hydraulic Tank Capacity	5 Litres

C-1240-03 CABLE FLOATING WATER PUMP



The CBS C-1240 Cable Floating Water Pump has been designed to work in conjunction with the C-1250 Tornado to install fibre cables using water instead of air.

ORDERING INFORMATION

C-1240-03 Cable Floating Water Pump

SPECIFICATIONS

Engine	Petrol 8hp
Max Water Pressure	20 Bar
Flow	107L/min
Dimensions	900x790x662mm
Weight	110kg



All compressors are fitted with air coolers, condensation separator and air filtration and come mounted on a two-wheel trailer.

The compressors feature clearly visible instruments, as well as individual fault indicators, such as battery pilot lamp and warming-up button. The panel uses a robust relay switching system with plug-in relays in a closed circuit system to fully protect the complete unit.

The instrument panel is protected against vandalism by a strong lockable steel enclosure.

ORDERING INFORMATION	
C-COMP-C85-12-F	CompAir 25-32mm EU Unit Compressor
C-COMP-C115-12-F	CompAir 32-40mm Non-EU Unit Compressor
C-COMP-C115-12-01-F	CompAir 32-40mm EU Unit Compressor



CABLE BLOWING

SPECIFICATIONS	C-COMP-C85-12-F	C-COMP-C115-12-F	C-COMP-C115-12-01-F
Manufacturer	CompAir	CompAir	CompAir
EU Unit	Yes	No	Yes
Duct Inner Bore	25-32mm	32-40mm	32-40mm
Output @ 12 Bar	300cfm (8.5m ³ /min)	406cfm (11.5m ³ /min)	406cfm (11.5m ³ /min)
Weight	1980kg	1995kg	1995kg
Length Over Tow bar	4.5m	4.5m	4.5m
Width	1.8m	1.8m	1.8m
Height	1.8m	1.8m	1.8m



The Compressor Aftercooler has been designed to cool compressed air and remove water droplets prior to entering a CBS Tornado Cable Blowing Machine.

The cooler unit is mounted on a tubular steel frame and is complete with gel-filled puncture proof wheels and transit handle for easy manoeuvrability.

An air driven motor impeller forces cooling air through the Compressor Aftercooler and reduces the temperature of the compressed air by approximately 10° centigrade. The air motor is driven by compressed air taken from the down stream side of the water separator and passes through a filter regulator-lubricator assembly prior to entering the air motor.

The Compressor Aftercooler is fitted with cam action quick release air hose couplings for easy fitting to interconnection air hoses normally supplied by CBS Products with a Tornado Cable Blowing Machine. Waste oil/water mixtures are collected in a frame mounted drain can for environmentally acceptable disposal.

The water separator protector bar doubles as a carry handle to assist with moving over soft terrain or loading into a vehicle.

SPECIFICATIONS

Length	1135mm
Width	640mm
Height	1000mm
Weight	74kg
Max Working Pressure	12 Bar
Max Air Compressor Flow Rate	12m ³ /min
Max Air Inlet Temperature	65°C
Max Air Outlet Temperature	50°C
Max Ambient Air Temperature	45°C
Air Hose Connections Type	1 1/2" cam and groove quick couplings

ORDERING INFORMATION

C-1227-01	Trolley mounted aftercooler unit with 15m hose
C-1250-AS1015-1	Air Hose CBM/COOLER with securing clip





The Fleeter replaces the manual method of “figure of eighting” cable and provides protection and security for the cable. Following installation of the cable in the first leg of the duct route, the balance of the cable is removed from the drum and fed into the Fleeter, thereby releasing the cable end ready for blowing into the second leg.

The Fleeter provides a smooth and simple system whilst ensuring cable protection from pedestrians or vehicles and prevents contamination from mud, soil or dust. The Fleeter is designed to work in conjunction with the Cable Blowing Machine, which provides the cable feed in and out of the Fleeter.

The unit accepts 3,000 metres of 13mm cable, allowing drum lengths of 6,000 metres to be utilized.

The Fleeter consists of a road going trailer chassis upon which is mounted a cable storage cassette, rotating cable guide quadrant and duct clamp assembly.



SPECIFICATIONS	
Length	3420mm
Width	2300mm
Height	2330mm
Weight	325kg
Tyre Size	145R 10
Brakes	Inertia with auto reverse
Cassette	2.0x0.85m
Rear Corner Steadies	2 off
Spirit Level Mounted	1 off
Towing Hitch	30/40mm Eye or 50mm Ball

ORDERING INFORMATION	
C-1265-20-01-R5	Cable Fleeting Device

CABLE BLOWING



The tube blowing conversion kits are initially used to convert an existing Tornado Cable Blowing Machine into a Tube Blowing Machine for installing micro tubes into ducts. If additional Tube Bundle Configurations are required, additional Tube Kits would be needed.

ORDERING INFORMATION

C-1250-CON-2x12	2x12mm Conversion Kit
C-1250-CON-3x12	3x12mm Conversion Kit
C-1250-CON-4x12	4x12mm Conversion Kit
C-1250-CON-6x12	6x12mm Conversion Kit
C-1250-CON-7x10	7x10mm Conversion Kit
C-1250-CON-5x10	5x10mm Conversion Kit
C-1250-CON-4x10	4x10mm Conversion Kit
C-1250-CON-3x10	3x10mm Conversion Kit
C-1250-CON-2x10	2x10mm Conversion Kit
C-1250-CON-10x7	10x7mm Conversion Kit
C-1250-CON-7x7	7x7mm Conversion Kit
C-1250-CON-6x7	6x7mm Conversion Kit

KIT CONTENTS

- ◆ 2 off – Hydraulic Motors
- ◆ 2 off – Drive Chassis (upper & lower)
- ◆ 1 off – Tube Guide Collet
- ◆ 1 off – Tube Guide & Screws
- ◆ 1 off – Venturi Collet





The tube-blowing machine, comprising an air box and pusher, has been designed to provide an effective and safe method of installing Micro-tubes.

Operating on the viscous drag principle using compressed air to install the tubes, controlled and assisted by a belt drive system. The electronic monitoring system provides read out of speed and distance, gives protection against duct obstructions and includes an emergency stop facility.

The system is mounted on an anti-corrosion treated, height adjustable, wheeled tubular steel trolley. This allows the unit to be wheeled around on site. The C-1203 hydraulic petrol driven power pack provides power. The unit is CE approved.

CONTROL PANEL FEATURES

- ◆ Power on/off button
- ◆ Emergency stop button
- ◆ Reset button
- ◆ Combined length counter recording in metres (feet) and cable speed read out in metres/min (feet/min)
- ◆ Hydraulic pressure read out dial
- ◆ Air pressure read out dial
- ◆ Hydraulic on/off control valve
- ◆ Adjustable speed control for drive belts
- ◆ Air supply control on/off with automatic exhaust function

AIR BOX FEATURES

- ◆ Manufactured in aluminium
- ◆ Range taking of varying combinations of tube configurations by means of interchangeable collets
- ◆ Duct sealing at mouth of air box
- ◆ Duct gripping facility designed to obviate duct crushing and distortion
- ◆ All seals, except cable seals, have a common diameter cord
- ◆ Upper section of air box is retained
- ◆ Air box aligned is adjustable for varying cable diameters
- ◆ No tools are required to split air box for insertion of cable and duct
- ◆ On/off air control valve with automatic air exhaust from duct when in "off" position

ORDERING INFORMATION

C-1250

Tornado Tube Blowing Machine

- ◆ Front mounted wheels for ease of manoeuvrability
- ◆ Lightweight anti-corrosion treated tubular steel frame
- ◆ Adjustable frame allowing unit to be tilted up to 30°, reducing bending of duct and cable
- ◆ Adjustable rear legs for uneven terrain

CABLE FEEDER FEATURES

- ◆ Manufactured in cast aluminium
- ◆ Unit lifts and splits to allow insertion of cable between drive belts
- ◆ Drive belts are profiled polyurethane, moulded
- ◆ Belt tension can be set by means of adjustable chain drive tensioners fitted to the side of the unit
- ◆ System relief valve fitted as standard

- ◆ 3mm Allen Key
- ◆ 4mm Allen Key
- ◆ 5mm Allen Key
- ◆ 6mm Allen Key
- ◆ 3mm dia. Cord x 2.5 metres long
- ◆ Silicone Grease
- ◆ Pliers 150mm
- ◆ Screwdriver 150mm (slot)
- ◆ Knife
- ◆ 13-17mm A/F Spanner

C-1203 HYDRAULIC POWER PACK



A trolley mounted hydraulic power pack with pre-set internal system protection relief valve and quick release connectors. The unit is powered by an air-cooled, 8hp Honda GX240 petrol engine, delivering 15 litres/min at a working pressure of 115 bar from the hydraulic circuit.

ORDERING INFORMATION

C-1203-F Hydraulic Power Pack with trolley

SPECIFICATIONS

Length	720mm
Width	530mm
Height	615mm
Weight	66kg
Hydraulic Tank Capacity	5 Litres

ORDERING INFORMATION

C-1250-TBK-2x12	2x12mm Tube Blowing Kit
C-1250-TBK-3x12	3x12mm Tube Blowing Kit
C-1250-TBK-4x12	4x12mm Tube Blowing Kit
C-1250-TBK-6x12	6x12mm Tube Blowing Kit
C-1250-TBK-7x10	7x10mm Tube Blowing Kit
C-1250-TBK-5x10	5x10mm Tube Blowing Kit
C-1250-TBK-4x10	4x10mm Tube Blowing Kit
C-1250-TBK-3x10	3x10mm Tube Blowing Kit
C-1250-TBK-2x10	2x10mm Tube Blowing Kit
C-1250-TBK-10x7	10x7mm Tube Blowing Kit
C-1250-TBK-7x7	7x7mm Tube Blowing Kit
C-1250-TBK-6x7	6x7mm Tube Blowing Kit

Tornado Tube Blowing Kit Includes:

- ◆ Tube Blowing Machine
- ◆ C-1203-F Hydraulic Powerpack
- ◆ 1 x Tube Kit
- ◆ 1 x Sub Duct Clamp Collet
- ◆ 1 x Sub Duct Seal Collet



DUCT CLAMP COLLET

ORDERING INFORMATION

C-1258-0200-25	25mm
C-1258-0200-32	32mm
C-1258-0200-38	38mm
C-1258-0200-40	40mm
C-1258-0200-50	50mm



DUCT SEAL COLLET

ORDERING INFORMATION

C-1257-0202-25	25mm
C-1257-0202-32	32mm
C-1257-0202-38	38mm
C-1257-0202-40	40mm
C-1257-0202-50	50mm



CBS has developed a micro tube pressuring system, which prevent potential problems where the blowing air can collapse the tubes. The system charges the tubes on their drums, this keeps the micro tubes stiff and resilient during the tube installation procedure.

Therefore before tube installation beings, CBS recommends that each length of tube is pressurised with use of the following equipment.

TUBE PRESSURE INFLATOR



ORDERING INFORMATION

C-1250-002 Tube Pressure Inflator

MULTI PRESSURISATION KIT



ORDERING INFORMATION

C-1250-003 Multi Pressurisation Kit

HEAT SHRINK CAPS 20 PACK



ORDERING INFORMATION

C-1250-001-HS-20 Heat Shrink Caps x20

10mm PLUG



ORDERING INFORMATION

C-1250-AS1002-10x8 10mm Plug



The C-1900 JetStream has been designed to provide maximum cable protection, combined with the performance and reliability of hydraulic drive. The profiled double drive belt system is driven by single 32cc hydraulic motor, powered by the proven C-1203-F power pack.

The electronic monitoring system provides read-out of speed and distance, gives protection against duct obstructions and includes emergency stop facility.

The C-1900 is adjustable to suit a wide range of cable diameters 4-20mm, and duct diameters 12-50mm.

MAIN FEATURES

- ◆ Automatic Cable Centralisation
- ◆ Synchronous high grip profiled drive belts
- ◆ Table top design
- ◆ Variable speed control
- ◆ Single person operation
- ◆ Digital cable speed and length monitoring
- ◆ Integral air valve and pressure gauge
- ◆ Easy cable threading
- ◆ Polycarbonate safety guarding
- ◆ Low maintenance
- ◆ Wheeled Travel case
- ◆ Tool kit



SPECIFICATIONS

Cable Range	4-20mm
Duct Range	12-50mm
Cable Speed	85m/min
Pushing Force	600N
Maximum Air Pressure	15 Bar
Drive Media	Hydraulic
Drive Type	Profiled Belt
Drive Orientation	Horizontal
Cable Speed Measurement	Proximity Switch
Length	700mm
Width	590mm
Height	550mm
Weight	60kg

ORDERING INFORMATION

C-1900	JetStream Cable Blowing Machine
--------	---------------------------------

In order to configure your JetStream to your application, we ask that you pick one of each from the list below, the cable collet assembly (A), the duct clamp and seal collets (B) and cable seals (C).



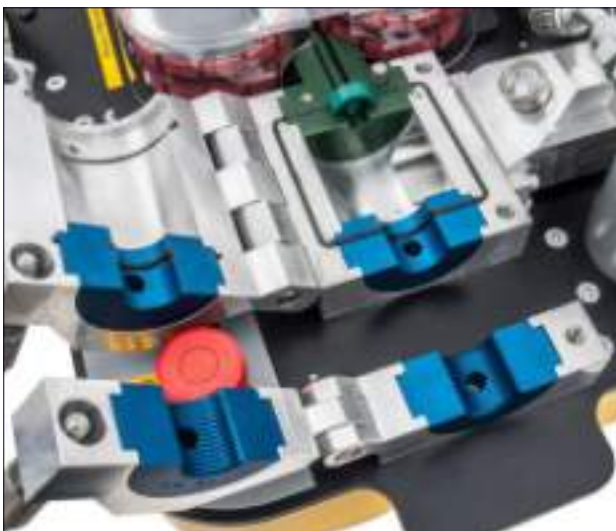
A. CABLE COLLET ASSEMBLY

C-1900-C-0406	4-6mm Cable Diameter
C-1900-C-0609	6-9mm Cable Diameter
C-1900-C-0912	9-12mm Cable Diameter
C-1900-C-1216	12-16mm Cable Diameter
C-1900-C-1620	16-20mm Cable Diameter



B. DUCT CLAMP & SEAL COLLET

C-1900-D-12	12mm Duct Outside Diameter
C-1900-D-14	14mm Duct Outside Diameter
C-1900-D-16	16mm Duct Outside Diameter
C-1900-D-18	18mm Duct Outside Diameter
C-1900-D-25	25mm Duct Outside Diameter
C-1900-D-32	32mm Duct Outside Diameter
C-1900-D-40	40mm Duct Outside Diameter
C-1900-D-50	50mm Duct Outside Diameter





C. CABLE SEALS (10 PACK)

C-1255-0208-04-05	4-5mm Cable Diameter
C-1255-0208-05-06-1	5-6mm Cable Diameter
C-1255-0208-06-07.5	6-7.5mm Cable Diameter
C-1255-0208-07.5-09	7.5-9mm Cable Diameter
C-1255-0208-09-10.5	9-10.5mm Cable Diameter
C-1255-0208-10.5-12	10.5-12mm Cable Diameter
C-1255-0208-12-14-F	12-14mm Cable Diameter
C-1255-0208-14-16-F	14-16mm Cable Diameter
C-1255-0208-16-18-F	16-18mm Cable Diameter
C-1255-0208-18-20-F	18-20mm Cable Diameter

D. CABLE SEAL PLUGS

C-1256-0206-05	4-5mm Cable Diameter
C-1256-0206-06	5-6mm Cable Diameter
C-1256-0206-07.5	6-7.5mm Cable Diameter
C-1256-0206-09	7.5-9mm Cable Diameter
C-1256-0206-10.5	9-10.5mm Cable Diameter
C-1256-0206-12	10.5-12mm Cable Diameter
C-1256-0206-14	12-14mm Cable Diameter
C-1256-0206-16	14-16mm Cable Diameter
C-1256-0206-18	16-18mm Cable Diameter
C-1256-0206-20	18-20mm Cable Diameter

TUBE SEAL O RINGS



ORDERING INFORMATION

C-1300-TS-12-5	12mm Seal O Rings
C-1300-TS-14-5	14mm Seal O Rings
C-1300-TS-16-5	16mm Seal O Rings
C-1300-TS-18-5	18mm Seal O Rings

DRIVE BELTS



ORDERING INFORMATION

C-1900-DB	6-20mm Drive Belts
C-1900-DB-1	4-16mm Drive Belts



ORDERING INFORMATION

C-RD-CAT-F	Precision Locator
------------	-------------------

The Cable Avoidance Tool is a full function, industry standard locator which every ground working operative will find familiar and easy to use. The unit is lightweight, rugged and packed full of features including LCD meter, detachable loudspeaker which can then be held near the ear in noisy environments, fingertip controls and precision locating as standard. The cable avoidance tool is designed to be used in conjunction with accessories such as the Signal Generator, Signal clamp and Sonde.

CONTROL FEATURES

- ◆ On/Off control. Battery check tone at switch on.
- ◆ 3 position function select switch:
P - Power mode for detecting liveimbalanced cables.
R - Radio mode for detecting re-radiated radio signals.
G - Generator mode for detecting conductors carrying the signal generated by the Signal Generator or Sonde.
- ◆ Sensitivity control.

DISPLAY FEATURES

- ◆ Large, easy to read LCD display.
- ◆ Shock resistant and mounted behind a polycarbonate lens for maximum protection.
- ◆ Display shows signal strength, battery condition and confirmation of selected mode.

FREQUENCY RANGES

- ◆ P – 50-400 Hz, 3 metres
- ◆ R – 15 – 20 kHz, 2 metres
- ◆ G – 33 kHz , 3 metres



OPTIONAL EXTRAS

C-R-SONDE-24	24mm Missile Sonde
C-R-SONDE-29	29mm Missile Sonde
C-R-SONDE-33	33mm Missile Sonde
C-R-SONDE-38	38mm Missile Sonde
C-R-SONDE-40	40mm Missile Sonde
C-R-SONDE-45	45mm Missile Sonde
C-R-SONDE-50	50mm Missile Sonde

PLASTIC DUCT CUTTER

Quick and easy to use the adjustable die cast circumferential cutter provides a clean cut of plastic ducts.



ORDERING INFORMATION

D-291-12-43-F	12-43mm Duct Cutter
D-291-25-81-F	25-81mm Duct Cutter
D-291-01-F	Spare Cutter Wheel

PLASTIC DUCT SLITTER

Tool for longitudinal cutting of duct, and removal of spare duct from installed cable



ORDERING INFORMATION

D-290-F	Plastic Duct Slitter
D-290-01-F	Spare Blade

C-1262 PRESSURISATION KIT



ORDERING INFORMATION

C-1262	Pressurisation Kit
C-1262-50	50mm Duct Connector
C-1262-40	40mm Duct Connector
C-1262-32	32mm Duct Connector
C-1262-25	25mm Duct Connector

The CBS Duct Pressurisation Kit has been designed to test the integrity of the duct by checking that the duct has no leaks. This will confirm that the duct holds air pressure, prior to cable blowing.



The CBS Cable Overblowing Junction Box has been designed to install a new cable or duct-tubes into an existing occupied sub-duct (subject to space being available).

SPECIFICATIONS

Dimensions	295 x 170 x 74mm
Weight	4kg
Max Operating Pressure	12 Bar
Cable Range Limit	9-20mm Outside Diameter
Min Duct Size	25mm
Max Duct Size	50mm

ORDERING INFORMATION

C-1253-32	32mm Duct Outside Diameter
C-1253-40	40mm Duct Outside Diameter
C-1253-50	50mm Duct Outside Diameter

20L UNIVERSALUBE CABLE LUBRICANT



Universalube is a water-based preparation based on wax and silicone polymers. It is easily applied and exhibits excellent coverage.

It is non-toxic, non-flammable and has no physical or chemical effects on cable sheath or sub duct. It can be used on cable blowing, cable pulling or duct pushing.

ORDERING INFORMATION

C-LUBE-02-F	20L Universalube
-------------	------------------

SPECIFICATIONS

Appearance	Milky Mobile Liquid
SG	Approx. 1
Viscosity	2500-4000cst
PH	6-8



The C-1750 Hurricane has been designed to maximise protection for micro cables with a compliant double drive belt concept, back by the latest technology in servo controls to provide precise control of torque and speed.

Single person operation with safe, easy to use operate ergonomic controls combines with low maintenance and high reliability to form the machines key features.

The C-1750 is adjustable to suit a wide range of cables from 2.5-16mm.

MAIN FEATURES

- ◆ Automatic cable centralising.
- ◆ Synchronous high grip profiled compliant drive belts.
- ◆ Vertical design with ergonomic controls for ease of operation.
- ◆ Forward and reverse. Variable torque and speed controls via remote.
- ◆ Digital servo motor drive system.
- ◆ Auto stop facility when air stone fitted.
- ◆ Single person operation.
- ◆ Digital cable speed and length monitoring.
- ◆ Integral air valve and pressure gauge
- ◆ Easy cable threading
- ◆ Lightweight and compact, low maintenance, low noise levels, travel case and tool kit
- ◆ Advanced data logging measuring speed, force, distance, GPS location and environmental conditions

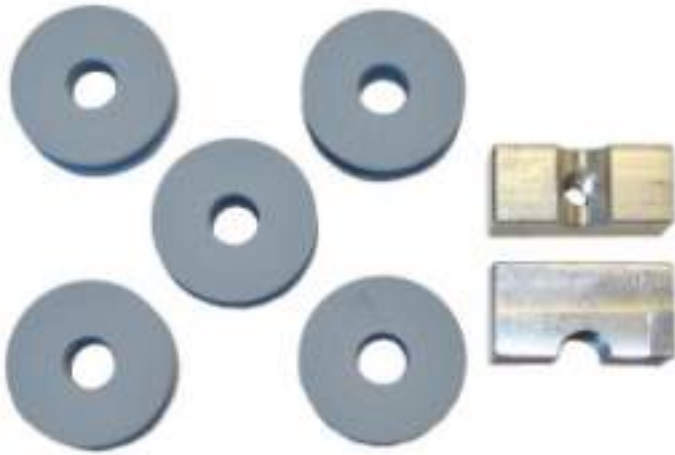
SPECIFICATIONS

Cable Range	2.5-16mm
Tube Size	5-25mm
Cable Speed	0-85m/min
Air Pressure	15 bar max
Power Requirement	220/110 VAC
Pushing Force	400N
Length	550mm
Width	310mm
Height	350mm
Weight	24kg

ORDERING INFORMATION

C-1750	Hurricane Cable Blowing Machine
--------	---------------------------------

In order to customise your Hurricane to your application, please select one of each from the list below, the Tube Collet and Clamp Assembly (A), the Cable Guide Assembly (B) and the Cable Seals (C). When ordering, please have Tube and Cable dimensions available.



A. TUBE COLLET & CLAMP ASSEMBLY

C-1750-TBC-05	5mm Tube Outside Diameter
C-1750-TBC-07	7mm Tube Outside Diameter
C-1750-TBC-08	8mm Tube Outside Diameter
C-1750-TBC-10	10mm Tube Outside Diameter
C-1750-TBC-12	12mm Tube Outside Diameter
C-1750-TBC-14	14mm Tube Outside Diameter
C-1750-TBC-16	16mm Tube Outside Diameter
C-1750-TBC-18	18mm Tube Outside Diameter
C-1750-TBC-20	20mm Tube Outside Diameter
C-1750-TBC-22	22mm Tube Outside Diameter
C-1750-TBC-25	25mm Tube Outside Diameter



B. CABLE GUIDE ASSEMBLIES

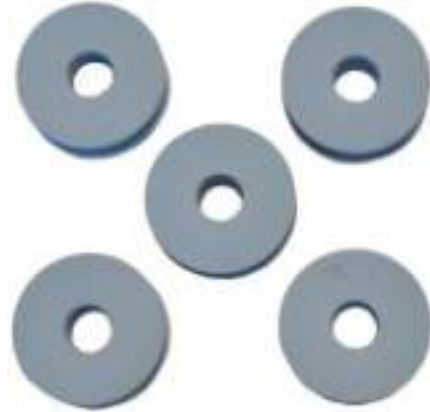
C-1750-CG-2.5-4	2.5-4mm Diameter
C-1750-CG-4-6	4-6mm Diameter
C-1750-CG-6-9	6-9mm Diameter
C-1750-CG-9-12	9-12mm Diameter
C-1750-CG-12-14	12-14mm Diameter
C-1750-CG-14-16	14-16mm Diameter



HURRICANE CONFIGURATION



TUBE SEALS (PACK OF 5)



C. CABLE SEALS (PACK OF 5)

C-1750-CS-2.5-3	Cable Seals 2.5-3mm
C-1750-CS-3-4	Cable Seals 3-4mm
C-1750-CS-4-5	Cable Seals 4-5mm
C-1750-CS-5-6	Cable Seals 5-6mm
C-1750-CS-6-7.5	Cable Seals 6-7.5mm
C-1750-CS-7.5-9	Cable Seals 7.5-9mm
C-1750-CS-9-10.5	Cable Seals 9-10.5mm
C-1750-CS-10.5-12	Cable Seals 10.5-12mm
C-1750-CS-12-14	Cable Seals 12-14mm
C-1750-CS-14-16	Cable Seals 14-16mm

ORDERING INFORMATION

C-1750-TS-05	5mm Diameter
C-1750-TS-07	7mm Diameter
C-1750-TS-08	8mm Diameter
C-1750-TS-10	10mm Diameter
C-1750-TS-12	12mm Diameter
C-1750-TS-14	14mm Diameter
C-1750-TS-16	16mm Diameter
C-1750-TS-18	18mm Diameter
C-1750-TS-20	20mm Diameter
C-1750-TS-22	22mm Diameter
C-1750-TS-25	25mm Diameter

REPLACEMENT DRIVE BELTS



ORDERING INFORMATION

C-1750-DB-2.5-9	Drive Belt, 2.5-9mm
C-1750-DB-3-11	Drive Belt, 3-11mm
C-1750-DB-5-14	Drive Belt, 5-16mm





The C-1700 AirStream has been designed to maximise protection for micro cables with a compliant double drive concept, backed by the latest technology in servo controls to provide precise control of torque and speed.

Single person operation with safe, easy to operate ergonomic controls combines with low maintenance and high reliability to form the machine's key features.

The C-1700 is adjustable to suit a wide range of cable diameters 2.5-11mm

MAIN FEATURES

- ◆ Automatic Cable centralising.
- ◆ Synchronous high grip profiled compliant drive belts.
- ◆ Table top design with ergonomic controls for ease of operation.
- ◆ Forward and reverse. Variable torque and speed controls.
- ◆ Digital servo motor drive system.
- ◆ Auto stop facility when air stone fitted.
- ◆ Single person operation.
- ◆ Digital cable speed and length monitoring.
- ◆ Lightweight and compact.
- ◆ Low maintenance.
- ◆ Low noise levels.
- ◆ Travel case.
- ◆ Tool kit.

SPECIFICATIONS

Cable Range	2.5-11mm
Tube Size	5-18mm
Cable Speed	0-80m/min
Air Pressure	10-15 Bar
Power Requirement	220/110 VAC
Length	460mm
Width	300mm
Height	270mm
Weight	14kg

ORDERING INFORMATION

C-1700	AirStream Cable Blowing Machine
--------	---------------------------------

ORDERING INFORMATION

C-1700-AS1059	Earth Rod Assembly
---------------	--------------------



MAIN FEATURES

- ◆ Automatic Cable centralising.
- ◆ Synchronous high grip profiled compliant drive belts.
- ◆ Table top design with ergonomic controls for ease of operation.
- ◆ Variable torque and speed controls.
- ◆ Pneumatic motor drive system.
- ◆ Counter system powered by easily available PP3 batteries (x2)
- ◆ Single person operation.
- ◆ Digital cable speed and length monitoring
- ◆ Integral air valves and pressure gauges.
- ◆ Easy cable threading.
- ◆ Polycarbonate safety guarding.
- ◆ Lightweight and compact.
- ◆ Low maintenance

The C-1700-PNEU Pneumatic AirStream has been designed to be a robust and simple to operate cable blowing machine.

The compliant double drive concept also provides the maximum protection for micro cables. Single person operation with safe, easy to operate ergonomic controls combined with low maintenance and high reliability to form the machine's key features.

The C-1700-PNEU is adjustable to suit a wide range of cable diameters 2.5-11mm.

SPECIFICATIONS

Cable Range	2.5-11mm
Tube Size	5-18mm
Cable Speed	0-80m/min
Recommended Compressor	>1.5m ³ /min @ 10-15 Bar
Length	460mm
Width	300mm
Height	270mm
Weight	14kg

ORDERING INFORMATION

C-1700-PNEU	Pneumatic AirStream Cable Blowing Machine
-------------	---



In order to customise your AirStream to your application, please select one of each from the list below, the Tube Collet Assembly (A), the Cable Guide Assembly (B) and the Cable Seal Collet Assembly (C). When ordering, please have Tube and Cable dimensions available.



A. TUBE COLLET & CLAMP ASSEMBLY

C-1700-TBC-05	5mm Tube Outside Diameter
C-1700-TBC-07	7mm Tube Outside Diameter
C-1700-TBC-08	8mm Tube Outside Diameter
C-1700-TBC-10	10mm Tube Outside Diameter
C-1700-TBC-12	12mm Tube Outside Diameter
C-1700-TBC-14	14mm Tube Outside Diameter
C-1700-TBC-16	16mm Tube Outside Diameter
C-1700-TBC-18	18mm Tube Outside Diameter



B. CABLE GUIDE ASSEMBLIES

C-1700-CG-02025	2.5mm Diameter
C-1700-CG-02503	2.6-3.5mm Diameter
C-1700-CG-0306	3-6.4mm Diameter
C-1700-CG-0685	6-8.5mm Diameter
C-1700-CG-8511	8.5-11mm Diameter



C. CABLE SEAL COLLET ASSEMBLIES

C-1700-CBL-2530	2.5-3mm
C-1700-CBL-3038	3-3.8mm
C-1700-CBL-3850	3.8-5mm
C-1700-CBL-5064	5-6.4mm
C-1700-CBL-6480	6.4-8mm
C-1700-CBL-8095	8-9.5mm
C-1700-CBL-9511	9.5-11mm



TUBE SEAL O RINGS



ORDERING INFORMATION

C-1300-TS-05-5	5mm Diameter
C-1300-TS-07-5	7mm Diameter
C-1300-TS-08-5	8mm Diameter
C-1300-TS-10-5	10mm Diameter
C-1300-TS-12-5	12mm Diameter
C-1300-TS-14-5	14mm Diameter
C-1300-TS-16-5	16mm Diameter
C-1300-TS-18-5	18mm Diameter

ORDERING INFORMATION

C-1300-CS-2530-5	2.5-3mm
C-1300-CS-3038-5	3-3.8mm
C-1300-CS-3850-5	3.8-5mm
C-1300-CS-5064-5	5-6.4mm
C-1300-CS-6480-5	6.4-8mm
C-1300-CS-8095-5	8-9.5mm
C-1300-CS-9511-5	9.5-11mm

DRIVE BELTS



ORDERING INFORMATION

C-1700-DB-0311	2.5-11mm Drive Belts
----------------	----------------------





This Compressor is specifically for use with the AirStream Cable Blowing Machines having 15 bar pressure with 1000 litres/m (35.3cfm) flow. The compressor is fitted with an aftercooler and water separator and comes mounted on a two-wheeled trolley.

ORDERING INFORMATION

C-M17-15	Air Compressor With Integrated Aftercooler
C-COMP-15	Air Compressor With Separate Aftercooler
C-AIR-HA-24X015	15m air Hose

SPECIFICATIONS

Engine	Honda 21.5hp
Fuel Tank Capacity	20L
Length	1200mm
Width	800mm
Height	780mm
Weight	205kg

PNEUMATIC AIRSTREAM COMPRESSOR



The C20-14 compressor has been specifically selected for use with the C-1700-PNEU pneumatic AirStream cable blowing machine.

The unit is fitted with integrated aftercooler and water trap, making it ideal for use in cable blowing applications.

SPECIFICATIONS

Output	70cfm @ 14 Bar
Engine	Kubota D1105 Diesel
Dimensions	3300 x 1200 x 1200mm
Weight	580kg

ORDERING INFORMATION

C-COMP-C20-14-F	14 Bar 70cfm Compressor
C-AIR-HA-24X015	15m Air Hose



ORDERING INFORMATION

C-1315-20-11 Mini Cable Fleeter

The Mini Cable Fleeting device has been developed to enable longer lengths of fibre optical cable to be laid from a single drum, for use with the AirStream.

Employed when the cable needs to be removed from the cable drum, in preparation for blowing the second section.

SPECIFICATIONS

Cable Diameter	5-11mm
Max Cable Length	2000m
Diameter	1555mm
Max Width	1640mm
Unit Height	1420mm
Weight	57kg

C-1315-20-08 MICRO CABLE FLEETING DEVICE



ORDERING INFORMATION

C-1315-20-08 Cable Fleeter

The Micro Cable Fleeting device has been developed to enable longer lengths of fibre optic cable to be laid from a single drum. Employed when the cable needs to be removed from the cable drum, in preparation for blowing the second section.

SPECIFICATIONS

Cable Diameter	5-8mm
Max Cable Length	2000m
Diameter	1200mm
Max Width	1285mm
Unit Height	1420mm
Weight	43.5kg



The CBS Cable Overblowing Junction Box has been designed to install a new cable into an existing occupied sub-duct.

SPECIFICATIONS

Existing Cable Range	9-20mm
Existing Duct Range	25-50mm
Installing Cable Range	2.5-11mm
Installing Tube Range	5-18mm
Max Pressure	15 Bar

ORDERING INFORMATION

C-1253-JBOX	Cable Overblowing Junction Box
-------------	--------------------------------

MICROGLIDE LUBRICANT



SPECIFICATIONS

Appearance	Milky Mobile Liquid	Viscosity	2500-4000cst
SG	Approx. 1	PH	6-8

ORDERING INFORMATION

C-1313-250	250ml	C-1313-5000	5L
------------	-------	-------------	----

C-1300 CABLE GUIDING HEADS



These are screwed on to the end of the cable to reduce friction during cable blowing.

ORDERING INFORMATION

C-1300-CGH-2.0	2mm Guide Heads	C-1300-CGH-8.0	8mm Guide Heads
C-1300-CGH-2.5	2.5mm Guide Heads	C-1300-CGH-8.5	8.5mm Guide Heads
C-1300-CGH-4.0	4mm Guide Heads	C-1300-CGH-9.0	9mm Guide Heads
C-1300-CGH-5.0	5mm Guide Heads	C-1300-CGH-10.0	10mm Guide Heads
C-1300-CGH-6.0	6mm Guide Heads	C-1300-CGH-11.0	11mm Guide Heads
C-1300-CGH-6.5	6.5mm Guide Heads	C-1300-CGH-12.0	12mm Guide Heads
C-1300-CGH-7.0	7mm Guide Heads		



The C-1800 AccelAir 2 Fibre Blowing Machine has been developed to provide a simple to use and reliable fibre blowing solution. The Accelair 2 is designed to fit a fibre range up to 3mm diameter, thereby providing the complete range of blown fibre installation solutions from one machine.

The Accelair 2 is a compact integrated fibre blowing machine benefiting from full automation and fibre management; sophisticated fibre protection is implemented to ensure the fibre mechanical and optical integrity is maintained. The machine only requires a single 24V D.C. electrical supply and compressed air to operate.

ORDERING INFORMATION

C-1800	AccelAir2 Fibre Blowing Machine
--------	---------------------------------

SPECIFICATIONS

Fibre Compatibility	Up to 1.6m with buckle detection, up to 3mm without buckle detection
Blowing Speed	Manual control up to 100m/min
Compatible Tubes	Any size from 3-10mm
Automation	In buckle mode machine is self-regulating
Air Supply	15 Bar max working pressure complete with suitable air conditioning
Electrical Supply	Universal mains power supply: 85-265V AC 47-63Hzm or 120-370V DC, 24V DC 2.2A.
Control	Remote user interface with backlit screen provides all necessary information, including current distance, speed, torque setting and fibre status
Machine Size	184 x 120 x 166mm
Machine Weight	3kg
Case Size	520 x 430 x 220mm
Case Weight	12kg

In order to customise your AccelAir2 to your application, please select one of each from the list below, the infeed guide (A), tube clamp (B) and fibre buckle plates (C). When ordering, please have tube and fibre dimensions available.



A. INFEED GUIDES

C-1800-CG-2	Infeed Guide up to 2mm
C-1800-CG-3	Infeed Guide 2-3mm



B. TUBE CLAMP & SEALS

C-1800-TBC-03	3mm Tube Clamp & Seals
C-1800-TBC-04	4mm Tube Clamp & Seals
C-1800-TBC-05	5mm Tube Clamp & Seals
C-1800-TBC-06	6mm Tube Clamp & Seals
C-1800-TBC-07	7mm Tube Clamp & Seals
C-1800-TBC-08	8mm Tube Clamp & Seals
C-1800-TBC-09	9mm Tube Clamp & Seals
C-1800-TBC-10	10mm Tube Clamp & Seals



C. FIBRE BUCKLE PLATES (BUCKLE SHUTTLE)

C-1800-FBP-C0.9-SS	0.9mm Fibre Buckle Plate
C-1800-FBP-C1.0-SS	1.0mm Fibre Buckle Plate
C-1800-FBP-C1.1-SS	1.1mm Fibre Buckle Plate
C-1800-FBP-C1.2-SS	1.2mm Fibre Buckle Plate
C-1800-FBP-C1.3-SS	1.3mm Fibre Buckle Plate
C-1800-FBP-C1.4-SS	1.4mm Fibre Buckle Plate
C-1800-FBP-C1.5-SS	1.5mm Fibre Buckle Plate
C-1800-FBP-C1.6-SS	1.6mm Fibre Buckle Plate

ACCELAIR2 CONFIGURATION



C. FIBRE BUCKLE PLATES (NO BUCKLE SHUTTLE)

C-1800-FBP-N1.6-SS	1.6mm Fibre Buckle Plate
C-1800-FBP-N1.7-SS	1.7mm Fibre Buckle Plate
C-1800-FBP-N1.8-SS	1.8mm Fibre Buckle Plate
C-1800-FBP-N1.9-SS	1.9mm Fibre Buckle Plate
C-1800-FBP-N2.0-SS	2.0mm Fibre Buckle Plate
C-1800-FBP-N2.1-SS	2.1mm Fibre Buckle Plate
C-1800-FBP-N2.2-SS	2.2mm Fibre Buckle Plate
C-1800-FBP-N2.3-SS	2.3mm Fibre Buckle Plate
C-1800-FBP-N2.4-SS	2.4mm Fibre Buckle Plate
C-1800-FBP-N2.5-SS	2.5mm Fibre Buckle Plate
C-1800-FBP-N2.6-SS	2.6mm Fibre Buckle Plate
C-1800-FBP-N2.7-SS	2.7mm Fibre Buckle Plate
C-1800-FBP-N2.8-SS	2.8mm Fibre Buckle Plate
C-1800-FBP-N2.9-SS	2.9mm Fibre Buckle Plate
C-1800-FBP-N3.0-SS	3.0mm Fibre Buckle Plate

TUBE SEALS



ORDERING INFORMATION

C-1800-TS-03	3mm Tube Seals
C-1800-TS-04	4mm Tube Seals
C-1800-TS-05	5mm Tube Seals
C-1800-TS-06	6mm Tube Seals
C-1800-TS-07	7mm Tube Seals
C-1800-TS-08	8mm Tube Seals
C-1800-TS-09	9mm Tube Seals
C-1800-TS-10	10mm Tube Seals

BUCKLE SHUTTLES



ORDERING INFORMATION

C-1800-BS	Buckle Shuttles x5
-----------	--------------------

SILICONE DRIVE WHEELS



ORDERING INFORMATION

C-1800-T1	Small 0.8-2mm Silicone Tyres
C-1800-T2	Large 2.1-3mm Silicone Tyres



BATTERY PACK CONTENTS

- ◆ Lithium Ion Battery
- ◆ Cigarette Lighter Charger
- ◆ AC Charger
- ◆ 12-24v DC Converter
- ◆ Cigarette Lighter Plug Adaptor for Converter

SPECIFICATIONS

Converter	12-24V DC
Voltage	12V
Cell Type	Lithium Ion

ORDERING INFORMATION

C-1800-DC-KIT	Li-Po Battery Pack
C-1800-BATT	Additional Battery

C-1420-10 PETROL DRIVEN BLOWN FIBRE COMPRESSOR



A compact 10 Bar compressor specifically for use with the CBS C-1800 Accelair2 Blown Fibre Unit. The compressor is fitted with aftercooling, filtration and air drying essential in providing the optimum viscous drag effect for maximum fibre blowing length.

ORDERING INFORMATION

C-1420-10	Fibre Blowing Compressor with 7m Air Hose
-----------	---

SPECIFICATIONS

Power Source	Air Cooled Honda GX160 Engine, Key Start
Air Compressor	Hydrovane, delivering 200L/min @ 10 Bar
Electrical Output	24V DC
Air Conditioning	Membrane dryer providing +1°C Pressure Dew Point based on +35°C inlet temperature and maximum flow. Filtration to 0.01µ m particulate and oil removal
Temperature Spec	Ambient Range +5°C to +40°C Cooling to maintain air temperature to within +3°C of ambient
Dimensions	875 x 680 x 605mm
Weight	95kg



The Whisper Cable Blowing Machine has been designed to provide a compact and portable cable installation system. Easy component changes allow for the installation of different cable sizes into pre-installed micro ducts.

Cable drive comes from most types of cordless drill (not included) and an electronic display provides readouts of cable installation speed and distance.

MAIN FEATURES

- ◆ Installs cable diameters of 3-8.5mm
- ◆ Accommodates micro duct sizes of 4-18mm
- ◆ Uses most variable speed drills as a power source
- ◆ Lightweight, durable construction with precision machined parts
- ◆ Single person operation
- ◆ Digital cable speed and length monitoring
- ◆ Integral air valve and pressure gauge
- ◆ Low maintenance
- ◆ Ideal for smaller installation jobs
- ◆ Travel bag included
- ◆ Toolkit

SPECIFICATIONS

Cable Range	3-8.5mm
Tube Size	4-18mm
Cable Speed	0-90m/min
Air Pressure	15 Bar
Length	246mm
Width	206mm
Height	216mm
Weight	5.4kg
Power Requirement	Variable Speed Drill
Recommended Compressor	C-COMP-15

ORDERING INFORMATION

G-GMP-89910	Whisper Cable Blowing Machine
-------------	-------------------------------



In order to customize your new "Whisper" to your application, we ask that you pick one of each from the lists below, the Tube Collet Assembly (A) and the Cable Seal Collet Assembly (B). When ordering, please have Tube and Cable dimensions available.



A. TUBE COLLET ASSEMBLY

G-GMP-89918	4mm
G-GMP-89919	5mm
G-GMP-89926	7mm
G-GMP-89927	8mm
G-GMP-89922	10mm
G-GMP-89923	12mm
G-GMP-89928	14mm
G-GMP-89925	16mm
G-GMP-89924	18mm



B. CABLE SEAL COLLET ASSEMBLY

G-GMP-89932	3-3.8mm
G-GMP-89933	3.8-5mm
G-GMP-89934	5-6.4mm
G-GMP-89935	6.4-8.5mm



CABLE SEALS

C-1300-CS-3038-5	3-3.8mm
C-1300-CS-3850-5	3.8-5mm
C-1300-CS-5064-5	5-6.4mm
C-1300-CS-6480-5	6.4-8mm
C-1300-CS-8085-5	8-8.5mm



ORDERING INFORMATION

C-1300-TS-04-5	4mm Diameter
C-1300-TS-05-5	5mm Diameter
C-1300-TS-07-5	7mm Diameter
C-1300-TS-08-5	8mm Diameter
C-1300-TS-10-5	10mm Diameter
C-1300-TS-12-5	12mm Diameter
C-1300-TS-14-5	14mm Diameter
C-1300-TS-16-5	16mm Diameter
C-1300-TS-18-5	18mm Diameter

DRILL STAND



This option helps support the drill during longer installations. Attaches to the tripod and can be adjusted for most drills.

ORDERING INFORMATION

G-GMP-89948	Adjustable Drill Stand
-------------	------------------------



CABLE BLOWING

- ◆ Lightweight and durable
- ◆ Positive locking clamps
- ◆ Aluminium alloy construction
- ◆ Flat head design
- ◆ Easy setup
- ◆ Built-in shoulder straps
- ◆ Collapsible for storage
- ◆ Max working height 1.6m

ORDERING INFORMATION

G-GMP-89945	Tripod Mount Kit
-------------	------------------



A high quality fibreglass rod, specially constructed to provide exceptionally high tensile strengths, whilst retaining flexibility. The 80% fill rate glass fibre core is reinforced with a high strength resin. A braided reinforcing wrap is added before the final polypropylene wear resistant protective coating is applied. The continuous rods range from 4.5mm – 14mm with lengths from 30 metres – 300 metres.

Product No	Rod Length	Weight	Cassette Diameter	Length	Width	Height	Min Bend Diameter	Breaking Strength
Mini Rod 4.5mm								
B-101-030	30m	4.5kg	400mm	400mm	162mm	520mm	140mm	750kg
B-101-050	50m	5kg						
B-101-060	60m	5.25kg						
B-101-070	70m	5.3kg						
B-101-080	80m	5.5kg						
Midi Rod 6.7mm								
B-102-060	60m	8.7kg	550mm	550mm	291mm	603mm	250mm	2380kg
B-102-080	80m	9.3kg						
B-102-100	100m	11kg						
B-102-150	150m	14kg						
Maxi Rod 9.0mm								
B-103-060-800	60m	26kg	800mm	850mm	520mm	940mm	465mm	3630kg
B-103-080-800	80m	30kg						
B-103-100-800	100m	33kg						
B-103-120-800	120m	35kg						
B-103-150-800	150m	36kg						
Maxi Rod 11mm								
B-104-100-1000	100m	43kg	1000mm	1110mm	520mm	1130mm	775mm	5630kg
B-104-150-1000	150m	45kg						
B-104-200-1000	200m	52kg						
B-104-250-1000	250m	59kg						
B-104-300-1000	300m	66kg						
Maxi Rod 14mm								
B-105-150-1200	150m	64kg	1200mm	1300mm	550mm	1300mm	950mm	8630kg
B-105-200-1200	200m	73kg						
B-105-250-1200	250m	84kg						
B-105-300-1200	300m	96kg						



THREADED ROD END FITTINGS

A male rod end fitting is supplied as standard with mini, midi and maxi rods. Replacement threaded rod end fittings allow the connection to other duct rod accessories, such as tapered rod ends, flexible guide ends, roller guides etc. Male and Female ends are available with M5, M6 and M12 threads.

MALE THREAD



ORDERING INFORMATION

B-101-END-M-F	4.5mm Mini Rod Male End
B-102-END-M-F	6.7mm Midi Rod Male End
B-103-END-M-F	9mm Maxi Rod Male End
B-104-END-M-F	11mm Maxi Rod Male End
B-105-END-M-F	14mm Maxi Rod Male End

DUCT RODS

FEMALE THREAD



ORDERING INFORMATION

B-101-END-F-F	4.5mm Mini Rod Female End
B-102-END-F-F	6.7mm Midi Rod Female End
B-103-END-F-F	9mm Maxi Rod Female End
B-104-END-F-F	11mm Maxi Rod Female End
B-105-END-F-F	14mm Maxi Rod Female End



Used to repair breakages in mini, midi and maxi rods. The ferrule is bonded to the rod with a two part adhesive.

ORDERING INFORMATION

B-101-FERR-F	4.5mm Mini Rod Ferrule
B-102-FERR-F	6.7mm Midi Rod Ferrule
B-103-FERR-F	9mm Maxi Rod Ferrule
B-104-FERR-F	11mm Maxi Rod Ferrule
B-105-FERR-F	14mm Maxi Rod Ferrule

FLEXIBLE GUIDE END



Used to guide duct rods around bends. Available for use with maxi rods.

ORDERING INFORMATION

B-103-4-FLEX	Flexible Guide End for Maxi Rods
--------------	----------------------------------

SHACKLE



Used with tapered rod end when a larger pulling loop is required. Available for mini, midi and maxi rods.

ORDERING INFORMATION

B-101-2-SHACK-F	Shackle for Mini & Midi Rods
B-103-4-SHACK-F	Shackle for Maxi Rods

SWIVEL CONNECTOR



Used to connect two duct rods together when the required rodding length exceeds a single duct rod. Available for use with 9mm, 11mm and 14mm maxi rods.

ORDERING INFORMATION

B-103-4-SWIV	Swivel Connector for Maxi Rods
--------------	--------------------------------

TAPERED ROD END



Supplied as standard with mini, midi and maxi rods, to guide the rod through the duct and allow the pulling rope to be attached to the rod.

ORDERING INFORMATION

B-101-TIP-F	Tapered Rod End for Mini Rods
B-102-TIP-F	Tapered Rod End for Midi Rods
B-103-4-TIP-F	Tapered Rod End for Maxi Rods

ROLLER GUIDE



Used in connection with maxi rods, this roller guide allows the duct rod to pass around bends and duct misalignments.

SPECIFICATIONS

Rod Diameter	9/11/14mm
Duct Diameter	60mm

ORDERING INFORMATION

B-103-4-ROLL	Roller Guide for Maxi Rods
--------------	----------------------------

DUCT RODS

1A GRIP COUPLING



A 3m long fiberglass rod designed to assist with the threading of BT 25mm sub duct.

ORDERING INFORMATION

C-CN15523	1A Grip Coupling
-----------	------------------



Enhance the detectability of cables and pipes; trace out the route of specific services. Use the signal generator to transmit an easily identifiable signal along a cable or pipe. Trace the lines using the Cable Avoidance Tool. New industry accepted 33 kHz operating frequency for clearer signal reception.

ORDERING INFORMATION

C-RD-ZCSSGV-F	Signal Generator
---------------	------------------

SIGNAL CLAMP



Extend the powerful versatility of the Signal Generator. Clip the Signal Clamp around a cable and safely transfer the Generator Signal.

ORDERING INFORMATION

C-RD-YIRSSC-F	Signal Clamp
---------------	--------------

SONDE



Trace non-metal pipes. Find pipe blockages. Trace the movement of in-pipe plant. A range of self contained transmitters propelled along a pipe or conduit.

SPECIFICATIONS

Dimensions	38x102mm
Thread	M10

ORDERING INFORMATION

C-RD-YIRS-33-F	33kHz Sonde
----------------	-------------



The duct rod pushers are designed to assist in rodding operations. The units are mounted on sturdy, anti corrosion treated tubular steel frame, and fitted with gel filled puncture proof tyres, with hydraulic controls mounted on the frame for ease of transportation. The pushers are fitted with a tilting extendable boom, and chamber clamp for use in underground structures.

FEATURES

- ◆ Spring loaded self-centring fail safe operating lever.
- ◆ Measuring counter with reset lever.
- ◆ Front boom extending to 1 metre with angle facility dropping into underground chamber.
- ◆ Extendable chamber clamp for attaching to sidewalls. Range 400 – 800mm.
- ◆ Angle of operation 0-45°
- ◆ Lifting Eye.
- ◆ Split pusher body which lifts and rotates to allow removal of duct rod.
- ◆ Anti crush control to prevent damage to rod.
- ◆ Disc spring controlled screw clamp to engage drive belts onto the rod.
- ◆ Moulded profiled drive belts.

SPECIFICATIONS

Diameter Range	14mm
Installation Speed	0-30m/min
Pushing/Pulling Capacity	220kg @ 60 Bar
Length	1050mm
Width	700mm
Height	760mm
Weight	53kg

ORDERING INFORMATION

C-1270-0001-04-BT Duct Rod Pusher - 50cc motors



D-196-01-F HEAVY DUTY CABLE ROLLER



All Zinc plated heavy duty assembly suitable for cables up to 125mm dia. Steel frame fitted large waisted steel roller running on sealed ball bearings.

SPECIFICATIONS

Dimensions	350 x 230mm
Weight	4kg

ORDERING INFORMATION

D-196-01-F	Heavy Duty Cable Roller
------------	-------------------------

D-196-02 NARROW CABLE ROLLER



Designed for use in narrow trenches. Lightweight assembly suitable for cables up to 76mm dia. Zinc plated steel frame fitted with large waisted solid aluminium roller running on low friction sintered bushes.

SPECIFICATIONS

Dimensions	320 x 145mm
Weight	2.75kg

ORDERING INFORMATION

D-196-02-F	Narrow Cable Roller
------------	---------------------

D-196-04 BRIDGE ROLLER



All Zinc plated heavy duty assembly as per the D-196-01, a cable roller designed to bridge existing cables up to 90mm dia.

SPECIFICATIONS

Dimensions	350 x 230mm
Weight	4.5kg

ORDERING INFORMATION

D-196-04-F	Bridge Roller
------------	---------------



Positioned in front of drum to guide cable into a trench or duct.

SPECIFICATIONS

Dimensions	825 x 500 x 415mm
Weight	19.45kg

ORDERING INFORMATION

D-194	V Frame Guide Set
-------	-------------------

D-195 TRENCH FEED ROLLER SET



Guides cables into trench, adjustable vertical guide rollers.

SPECIFICATIONS

Dimensions	1000 x 200 x 250mm
Weight	22kg

ORDERING INFORMATION

D-195	Trench Feed Roller Set
-------	------------------------

D-439 LEAD ROLLER



A horizontal roller to protect cable feeding from drum, fitted with end guides

SPECIFICATIONS

Dimensions	1000 x 300 x 180mm
Weight	11kg

ORDERING INFORMATION

D-439	Lead Roller
-------	-------------

D-1041-001 MANHOLE ENTRY ROLLER



This roller is used to guide draw rope into and out of manhole openings.

SPECIFICATIONS

Dimensions	260 x 150 x 160mm
Weight	2.4kg

ORDERING INFORMATION

D-1041-001	Manhole Entry Roller
------------	----------------------

D-1047-001 TRIPLE CORNER ROLLER



All zinc plated finish and using two vertical and one horizontal steel roller for taking the heaviest cables round difficult corners.

SPECIFICATIONS

Dimensions	295 x 290 x 540mm
Weight	12kg

ORDERING INFORMATION

D-1047-001	Triple Corner Roller
------------	----------------------

D-437-F ANGLE CORNER ROLLER



Purpose designed for taking the heaviest cables round difficult corners and bends. Incorporates a vertical and horizontal roller 75mm diameter on low friction sintered bushes

SPECIFICATIONS

Dimensions	280 x 160 x 300mm
Weight	9kg

ORDERING INFORMATION

D-437-F	Angle Corner Roller
---------	---------------------

Designed for placing at the end of the manhole or pit entrance to ease the cable in. Triple Aluminium Roller on tubular steel frame. Zinc Plated.



SPECIFICATIONS	
Dimensions	500 x 290 x 630mm
Weight	14kg

ORDERING INFORMATION	
D-1048-001-F	Manhole Quadrant Roller



Cable Pulling Grips are manufactured from high-grade galvanized steel wire, in either a single or double weave construction.

Slipped over the outside of the cable, when tension is applied the grip contracts applying the pulling force to the cable.

Split grips are available on all models, for example; E-958-0611-SP.

SPECIFICATIONS - SINGLE WEAVE				
Single Eye	E-958-0611	E-958-1311	E-958-1911	E-958-2511
Double Eye	E-958-0612	E-958-1312	E-958-1912	E-958-2512
Diameter Range	6-13mm	13-19mm	19-25mm	25-38mm
Grip Length	300mm	550mm	600mm	700mm

SPECIFICATIONS - DOUBLE WEAVE			
Single Eye	E-958-3821	E-958-5121	E-958-6321
Double Eye	E-958-3822	E-958-5122	E-958-6322
Diameter Range	38-51mm	51-63mm	63-76mm
Grip Length	1000mm	1300mm	1300mm



Pulling socks or stockings, are indispensable in many different cable pulling applications. Manufactured from high-tensile, galvanized steel wire that is evenly hand woven in a single, double or triple wire weave according to pulling tension requirements. We reverse weave our grips which create a loop at the end of the grip instead of being crimped or soldered together. The wire is then joined under the crimped head. This creates a higher quality product that outlasts the competition.

SPECIFICATIONS - DOUBLE WEAVE, FLEXIBLE EYES

Single Eye	E-546-0621	E-546-1021	E-546-2021	E-546-3021	E-546-4021	E-546-5021
Double Eye	E-546-0622	E-546-1022	E-546-2022	E-546-3022	E-546-4022	E-546-5022
Diameter Range	6-13mm	10-20mm	20-30mm	30-40mm	40-50mm	50-65mm
Min Breaking Strength	1,504kg	1,860kg	2,256kg	3,696kg	5,490kg	5,490kg
Single Eye	E-546-6521	E-546-8021	E-546-9521	E-546-11021	E-546-13021	E-546-15021
Double Eye	E-546-6522	E-546-8022	E-546-9522	E-546-11022	E-546-13022	E-546-15022
Diameter Range	65-80mm	80-95mm	95-110mm	110-130mm	130-150mm	150-180mm
Min Breaking Strength	7,320kg	7,320kg	10,613kg	10,613kg	12,736kg	12,736kg

SPECIFICATIONS - DOUBLE WEAVE, SINGLE FLEETING EYE & OPEN SLEEVE

Single Fleeting Eye	E-855-1021	E-855-2021	E-855-3021	E-855-4021	E-855-5021	E-855-6521
Open Sleeve	E-856-1020	E-856-2020	E-856-3020	E-856-4020	E-856-5020	E-856-6520
Diameter Range	10-20mm	20-30mm	30-40mm	40-50mm	50-65mm	65-80mm
Min Breaking Strength	1,860kg	2,256kg	3,696kg	5,490kg	5,490kg	7,320kg
Single Fleeting Eye	E-855-8021	E-855-9521	E-855-11021	E-855-13021	E-855-15021	
Open Sleeve	E-856-8020	E-856-9520	E-856-11020	E-856-13020	E-856-15020	
Diameter Range	80-95mm	95-110mm	110-130mm	130-150mm	150-180mm	
Min Breaking Strength	7,320kg	10,613kg	10,613kg	12,736kg	12,736kg	



Manufactured from Zinc plated Steel, the Bellmouth comes in separable halves to guide the Cable through the Duct to avoid damage to both the Cable and Duct. Also available with rollers.

ORDERING INFORMATION

D-206-60-F	60-69mm Steel Bellmouth
D-206-80-F	76-89mm Steel Bellmouth
D-207-90-F	90-97mm Steel Bellmouth
D-207-100-F	99-106mm Steel Bellmouth
D-207-125-F	124-130mm Steel Bellmouth
D-207-150-F	148-155mm Steel Bellmouth
D-207-160-F	152-176mm Steel Bellmouth
D-207-175-F	173-190mm Steel Bellmouth
D-207-200-F	194-212mm Steel Bellmouth
D-207-230-F	220-239mm Steel Bellmouth
D-207-250-F	246-266mm Steel Bellmouth

STEEL BELLMOUTH WITH GUIDE ROLLER



In separable hinger halves to guide the cable through the duct to avoid damage to both the cable or the duct. Fitted with a guide roller for additional rope guidance and protection. Zinc plated finish.

ORDERING INFORMATION

D-206-60-R-F	60-69mm Steel Bellmouth
D-206-80-R-F	76-89mm Steel Bellmouth
D-207-90-R-F	90-97mm Steel Bellmouth
D-207-100-R-F	99-106mm Steel Bellmouth
D-207-125-R-F	124-130mm Steel Bellmouth
D-207-150-R-F	148-155mm Steel Bellmouth
D-207-160-R-F	152-176mm Steel Bellmouth
D-207-175-R-F	173-190mm Steel Bellmouth
D-207-200-R-F	194-212mm Steel Bellmouth
D-207-230-R-F	220-239mm Steel Bellmouth
D-207-250-R-F	246-266mm Steel Bellmouth

D-161 A STYLE JOINTER'S UTILITENT



Designed to protect workers from the elements, these brightly coloured tents are easily seen by oncoming traffic. The tents are made from a durable, water repellent nylon/polyester, with adjustable rod ends for side wall tension, zipped door, vent windows and tie down loops on all corners and can pop up or down in a matter of seconds, requiring no assembly.

A-Style: Includes two screen windows with roll up flaps, three tie down cords through the hub, ground flaps, single zippered front door, exterior roof line loops for tie down.

ORDERING INFORMATION	D-161-00-F	D-161-01-1-F
Dimensions	1.8 x 1.8 x 1.8m	2.4 x 2.4 x 2.0m
Weight	9.1kg	14.1kg

D-161 D STYLE JOINTER'S UTILITENT



D-Style: Includes two screen windows with roll up flaps, three tie down cords through the hub, ground flaps, heavy duty frame, wide open front, snap and loops with interconnectable flaps (connect 2 tents together), ventilation hose entry sleeve, interior and exterior roof line loops for tie down.

ORDERING INFORMATION	D-161-02-F	D-161-03-F
Dimensions	1.8 x 1.8 x 1.8m	2.4 x 2.4 x 2.0m
Weight	9.5kg	14.5kg



SPECIFICATIONS	
Fan Diameter	200mm
Dimensions	355 x 305 x 330mm
Weight	8kg
Noise	74dB

ORDERING INFORMATION	
D-ED9002-F	12V DC Blower
D-ED8002-F	240V AC Blower
D-ED6002-F	110V AC Blower

Ramfan combines high performance turbofan design with high strength polymers to create a line of rugged, portable turbo blowers. The line is ideal for general use, confined space, hazardous ventilation and delivers the highest airflow in their class. The double-wall, polyethylene case is lightweight, corrosion and chemical resistant and handles the bumps and falls of any jobsite.

- ◆ Powerful, compact size and lightweight.
- ◆ High pressure axial blower with 9 blade impeller.
- ◆ Corrosion proof, dent resistant and virtually indestructible.
- ◆ Double-walled UV resistant polyethylene house.
- ◆ Ultra quiet operation.
- ◆ Thermal switch provides overheat protection.
- ◆ AC-15 ft cord c/w power switch, IP65 raintested switch enclosure.
- ◆ DC-15 ft cord c/w battery clips.

SPECIFICATIONS	D-ED9002-F	D-ED8002-F	D-ED6002-F
Free Air	862cfm/hr	819cfm/hr	819cfm/hr
4.6m 1x 90° Turn	695cfm/hr	659cfm/hr	659cfm/hr
4.6m 2x 90° Turn	586cfm/hr	558cfm/hr	558cfm/hr
Power	12V DC 11.5A	240V AC 1.2A	110V AC 1.2A

**Also requires D-BPV-12CE-F Battery pack to operate.



Detachable in seconds, the Quick-Couple canister with attached duct conveniently reverses from discharge to suction, making use and storage easier while protecting duct from rips and tears.

ORDERING INFORMATION

D-ED6015-F	4.6m duct 110V 50Hz Blower
D-ED6025-F	7.6m duct 110V 50Hz Blower
D-ED8015-F	4.6m duct 220V 50Hz Blower
D-ED8025-F	7.6m duct 220V 50Hz Blower
D-ED9015-F**	4.6m duct 12V DC Blower
D-ED9025-F**	7.6m duct 12V DC Blower

**Also requires D-BPV-12CE-F Battery pack to operate

4.6m CANISTER

7.6m CANISTER

Dimensions	356 x 305 x 800mm	356 x 305 x 1050mm
------------	-------------------	--------------------

UB20 MANHOLE ENTRY DEVICE



ORDERING INFORMATION

D-ED6015-MED-F	110V/50Hz Blower and 4.6m/1.5m Duct
D-ED8015-MED-F	220V/50Hz Blower and 4.6m/1.5m Duct
D-ED9015-MED-F**	12V DC Blower and 4.6m/1.5m Duct

**Also requires D-BPV-12CE-F Battery pack to operate

The MED allows workers to enter and exit small man-size openings while maintaining continuous ventilation. Without such a device, duct fills the manhole opening, preventing rapid entry and exit. Tightly integrated into the UB line of confined space ventilation equipment, the MED is quick to assemble and the new swivelling elbow makes duct alignment easy.

Changing its cross section from circular to elliptical and back to circular minimises loss and optimises airflow into a confined space, while providing adequate room for a worker to enter and exit unimpeded. The rugged polyurethane construction endures heavy, negligent use and will last for years.



ORDERING INFORMATION	
D-ED9015-BATCE-F	UB20 12V DC 4.6m Blower Kit
D-ED9025-BATCE-F	UB20 12V DC 7.6m Blower Kit

The long life battery pack features high-low control. Pulse width modulation extends the battery up to 10 hours in the low setting, yet gives a full 2.5 hours on high. Can be used with vehicle batteries with optional connector. Built-in charger allows you to fully recharge the battery in 12 hours.

Purge the area on high for 10 minutes, then switch to low speed (low noise as well) and maintain fresh air for the whole work shift. Ideal for construction job sites to eliminate noisy petrol powered blowers.

UB20 IN-LINE HEATING SYSTEM



	D-HA02-F	D-HA03-F
Power	110V AC 50Hz	240V AC 50Hz
Output	70k BTU	70k BTU
Weight	13.5kg	13.5kg

The in-line heating system with its propane-fired heat exchanger provides safe, warm breathing air in cold conditions.

- ◆ For tent/shelter or confined space heating.
- ◆ Remote thermostat included.
- ◆ Up to 10 hours continuous operation with standard propane gas cylinder.
- ◆ Heater attaches quickly and easily to UB20 blower.
- ◆ Includes propane regulator and connection assembly.
- ◆ Easy access top-mounted heater control panel.

ORDERING INFORMATION	
D-HA02-F	110V AC 50Hz Heater
D-HA03-F	240V AC 50Hz Heater



UB20 BLOWER

D-687 DOUBLE SHEAVE **RUNNING OUT BLOCK**



Designed to be strong but light, the D-687 is suitable for pole work. The aluminium sheaves are mounted on sealed ball bearings for low resistance.

SPECIFICATIONS	
Dimensions	210 x 200 x 360mm
Weight	7.3kg
SWL	500kg

ORDERING INFORMATION	
D-687	Pole Mounted Double Sheave Running Out Block

D-685 SINGLE OFFSET SHEAVE **RUNNING OUT BLOCK**



This block has the same features as the CBS 687. Single sheave is offset to assist with, fixing conductor to clamp.

SPECIFICATIONS	
Dimensions	210 x 280 x 330mm
Weight	4kg
SWL	300kg

ORDERING INFORMATION	
D-685	Pole Mounted Single Sheave Running Out Block

D-686 INTERMEDIATE **RUNNING OUT BLOCK**



Has a split frame and hooks to locate on brackets. The aluminium sheave is mounted on sealed ball bearings. Guide ring protect conductor from damage.

SPECIFICATIONS	
Dimensions	110 x 250 x 140mm
Weight	2kg
SWL	300kg

ORDERING INFORMATION	
D-686	Single Sheave Split Running Out Block

D-793 REAR POLE ROLLER BLOCK



Suitable for stringing conductors at the rear of an angle pole.

SPECIFICATIONS

Dimensions	250 x 200 x 300mm
Weight	10kg
SWL	600kg

ORDERING INFORMATION

D-793	Rear Pole Roller Block
-------	------------------------

D-798 POLE TRAVERSING BLOCK



The block allows the stringing operation to be fed up or down poles, when access at the rear of the pole is not available. 300mm sheave with quick acting ratchet fixing and a conductor side gate.

SPECIFICATIONS

Dimensions	300 x 260 x 100mm
Weight	10kg
SWL	1,200kg

ORDERING INFORMATION

D-798	Pole Traversing Block
-------	-----------------------

D-694-2 STRAIGHT CROSSARM RUNNING OUT BLOCK



Designed to mount onto cross arms up to 100mm angle. Sheaves are fitted with sleeve bearings. Unit comes complete with uplift roller to prevent conductor lifting out.

SPECIFICATIONS

Outside Diameter	85mm
Groove Width	25mm
Root Diameter	45mm
Weight	3kg
SWL	350kg

ORDERING INFORMATION

D-694-2	Crossarm Running Out Block - Straight
---------	---------------------------------------



Designed to mount onto angle cross arms up to 100mm. Sheaves are fitted with sleeve bearings. This design allows conductors to be strung around route deviations.

SPECIFICATIONS

Outside Diameter	85mm
Groove Width	25mm
Root Diameter	45mm
Weight	4.3kg
SWL	300kg

ORDERING INFORMATION

D-807	Crossarm Running Out Block - Angle
-------	------------------------------------

D-861 ANGLE CROSSARM RUNNING OUT BLOCK



The dual pin allows the nylon top roller to be opened from either side when inserting conductor. Suitable for cross arms up to 150mm angle.

SPECIFICATIONS

Outside Diameter	120mm
Groove Width	55mm
Root Diameter	55mm
Weight	3.6kg
SWL	300kg

ORDERING INFORMATION

D-861	Crossarm Running Out Block - Straight
-------	---------------------------------------



The adjustable angle facility allows the sheave to position through 180° in 45° increments. Fits cross arms up to 150mm angle. Nylon roller fitted.

SPECIFICATIONS

Outside Diameter	120mm
Groove Diameter	55mm
Root Diameter	55mm
Weight	5kg
SWL	400kg

ORDERING INFORMATION

D-862-1	Crossarm Angle Roller
---------	-----------------------

D-733 INSULATOR MOUNTED RUNNING OUT BLOCK



Suitable for 33kV insulator, has two sheaves for stringing, which are lowered for making off onto insulator. The D-733 is designed to fit insulators from 115 – 135mm, whilst the D-917 is designed to fit insulators from 70 – 90mm.

SPECIFICATIONS

Dimensions	475 x 250 x 100mm
Weight	4kg
SWL	150kg

ORDERING INFORMATION

D-733	Insulator Mounted Running Out Block - 33kV
D-733-2	Insulator Mounted Running Out Block - 33kV With Uplift
D-917	Insulator Mounted Running Out Block - 11kV



Single sheave aluminium suspension block with spring loaded safety gate & steel zinc plated side frames.

D-691-010 has a swivel oval eye arrangement. D-691-020 has a hole mounting to fit insulated clevis. Neoprene lining available on request.

ORDERING INFORMATION

D-691-010	Running Out Block Oval Eye
D-691-020	Running Out Block Tongue Mounting Clevis

SPECIFICATIONS

Dimensions	550 x 300 x 170
Outside Diameter	300mm
Groove Width	45mm
Root Diameter	245mm
Weight	9kg
SWL	2,400kg

SINGLE SHEAVE ALUMINIUM SUSPENSION BLOCK



Single sheave aluminium suspension block with spring loaded safety gate & steel zinc plated side frames.

D-700 has a swivel oval eye arrangement. D-702 has a hole mounting to fit insulated clevis. Neoprene lining available on request.

ORDERING INFORMATION

D-700-010	Running Out Block Rotating Oval Eye
D-702-020	Running Out Block Tongue Mounting Clevis

SPECIFICATIONS

Dimensions	703 x 470 x 200mm
Outside Diameter	470mm
Groove Width	55mm
Root Diameter	385mm
Weight	14kg
SWL	2,400kg

D-717 TANDEM SHEAVE SUSPENSION BLOCK



With an automatic safety gate and steel sideframes. Also available with slip ring for earthwire earthing.

ORDERING INFORMATION

D-717 Tandem Aluminium Sheave Running Out Block

SPECIFICATIONS

Outside Diameter	175mm
Groove Width	65mm
Root Diameter	100mm
Weight	7kg
SWL	4,000kg

D-668 SWIVEL SAGGING BLOCK



Designed to fit tower cross arm to accept wire rope for sagging connector.

ORDERING INFORMATION

D-668	Swivel Sagging Block - M20
D-668-01	Swivel Sagging Block - M16
D-668-02	Swivel Sagging Block - M22

SPECIFICATIONS

Max Wire Rope Diameter	24mm
D-668-01 - SWL	2,000kg
D-668 - SWL	3,500kg
D-668-02 - SWL	5,000kg

D-670 STRAIGHT SAGGING BLOCK



Designed to fit tower cross arm to accept wire rope for sagging connector.

ORDERING INFORMATION

D-670 Straight Sagging Block

SPECIFICATIONS

Max Wire Rope Diameter	16mm
Weight	8kg
SWL	2,000kg

D-736 SINGLE SHEAVE SUSPENSION BLOCK



Capable of accommodating the larger conductor, this aluminium suspension block has an automatic safety gate and steel frames. Hole mounted to fit insulator clevis.

SPECIFICATIONS

Outside Diameter	760mm
Groove Width	65mm
Root Diameter	625mm
Weight	24kg
SWL	2,400kg

ORDERING INFORMATION

D-736	Running Out Block
-------	-------------------

D-1061 RUNNING OUT BLOCK



Single sheave aluminium suspension block with an automatic safety gate and steel side frames. Hole mounting c/w shackle.

SPECIFICATIONS

Outside Diameter	620mm
Groove Width	56mm
Root Diameter	530mm
Weight	20kg
SWL	2,400kg

ORDERING INFORMATION

D-1061	Running Out Block
--------	-------------------



With an automatic safety gate and steel sideframes.
Hole mounting to fit insulator clevis.

ORDERING INFORMATION

D-691	Single Sheave Aluminium Suspension Block
-------	--

SPECIFICATIONS

Outside Diameter	300mm
Groove Width	45mm
Root Diameter	245mm
Weight	7kg
SWL	2,400kg

AERIAL BUNDLE CONDUCTOR CLAMPS



Manufactured from high quality materials, the clamps have been specially designed to suit ABC conductors and provide a wide range per clamp to suit the range of twin and quad bundles.

ORDERING INFORMATION

D-766	Come Along clamp 4x25-50mm ²
D-768	Come Along clamp 4x95mm ²
D-974	Come Along clamp 4x120mm ²

SPECIFICATIONS	D-766	D-768	D-974
Range	4x25-50mm ² / 2x35-95mm ²	4x70-95mm ²	4x120mm ²
WLL	600kgf	800kgf	1,000kgf
Weight	2.3kg	4.7kg	7.95kg



SPECIFICATIONS

Max Safety Load	117kN
Min Breaking Load	285kN
Weight	17kg

ORDERING INFORMATION

D-IR3104-G4A225F-F	22.5-24mm Interchangeable Liner for Aluminium	D-IR3104-G4B225F-F	22.5-24mm Interchangeable Liner for Copper
D-IR3104-G4A240F-F	24-25.5mm Interchangeable Liner for Aluminium	D-IR3104-G4B240F-F	24-25.5mm Interchangeable Liner for Copper
D-IR3104-G4A255F-F	25.5-27mm Interchangeable Liner for Aluminium	D-IR3104-G4B255F-F	25.5-27mm Interchangeable Liner for Copper
D-IR3104-G4A270F-F	27-28.5mm Interchangeable Liner for Aluminium	D-IR3104-G4B270F-F	27-28.5mm Interchangeable Liner for Copper
D-IR3104-G4A285F-F	28.5-30mm Interchangeable Liner for Aluminium	D-IR3104-G4B285F-F	28.5-30mm Interchangeable Liner for Copper
D-IR3104-G4A300F-F	30-31.5mm Interchangeable Liner for Aluminium	D-IR3104-G4B300F-F	30-31.5mm Interchangeable Liner for Copper
D-IR3104-G4A315F-F	31.5-33mm Interchangeable Liner for Aluminium	D-IR3104-G4B315F-F	31.5-33mm Interchangeable Liner for Copper
D-IR3104-G4A330F-F	33-34.5mm Interchangeable Liner for Aluminium	D-IR3104-G4B330F-F	33-34.5mm Interchangeable Liner for Copper
D-IR3104-G4A345F-F	34.5-36mm Interchangeable Liner for Aluminium	D-IR3104-G4B345F-F	34.5-36mm Interchangeable Liner for Copper
D-IR3104-G4A360F-F	36-37.5mm Interchangeable Liner for Aluminium	D-IR3104-G4B360F-F	36-37.5mm Interchangeable Liner for Copper
D-IR3104-G4A375F-F	37.5-39mm Interchangeable Liner for Aluminium	D-IR3104-G4B375F-F	37.5-39mm Interchangeable Liner for Copper
D-IR3104-G4A390F-F	39-40.5mm Interchangeable Liner for Aluminium	D-IR3104-G4B390F-F	39-40.5mm Interchangeable Liner for Copper
D-IR3104-G4A410F-F	41mm Interchangeable Liner for Aluminium	D-IR3104-G4B410F-F	41mm Interchangeable Liner for Copper



SPECIFICATIONS

Max Safety Load	88kN
Min Breaking Load	235kN
Weight	13.5kg

ORDERING INFORMATION

D-IR3105-G5A120F-F	12-13.5mm Interchangeable Liner for Aluminium	D-IR3105-G5B120F-F	12-13.5mm Interchangeable Liner for Copper
D-IR3105-G5A135F-F	13.5-15mm Interchangeable Liner for Aluminium	D-IR3105-G5B135F-F	13.5-15mm Interchangeable Liner for Copper
D-IR3105-G5A150F-F	15-16.5mm Interchangeable Liner for Aluminium	D-IR3105-G5B150F-F	15-16.5mm Interchangeable Liner for Copper
D-IR3105-G5A165F-F	16.5-18mm Interchangeable Liner for Aluminium	D-IR3105-G5B165F-F	16.5-18mm Interchangeable Liner for Copper
D-IR3105-G5A180F-F	18-19.5mm Interchangeable Liner for Aluminium	D-IR3105-G5B180F-F	18-19.5mm Interchangeable Liner for Copper
D-IR3105-G5A195F-F	19.5-21mm Interchangeable Liner for Aluminium	D-IR3105-G5B195F-F	19.5-21mm Interchangeable Liner for Copper
D-IR3105-G5A210F-F	21-22.5mm Interchangeable Liner for Aluminium	D-IR3105-G5B210F-F	21-22.5mm Interchangeable Liner for Copper
D-IR3105-G5A225F-F	22.5-24mm Interchangeable Liner for Aluminium	D-IR3105-G5B225F-F	22.5-24mm Interchangeable Liner for Copper
D-IR3105-G5A240F-F	24-25.5mm Interchangeable Liner for Aluminium	D-IR3105-G5B240F-F	24-25.5mm Interchangeable Liner for Copper
D-IR3105-G5A255F-F	25.5-27mm Interchangeable Liner for Aluminium	D-IR3105-G5B255F-F	25.5-27mm Interchangeable Liner for Copper
D-IR3105-G5A270F-F	27-28.5mm Interchangeable Liner for Aluminium	D-IR3105-G5B270F-F	27-28.5mm Interchangeable Liner for Copper
D-IR3105-G5A285F-F	28.5-30mm Interchangeable Liner for Aluminium	D-IR3105-G5B285F-F	28.5-30mm Interchangeable Liner for Copper
D-IR3105-G5A300F-F	30-31.5mm Interchangeable Liner for Aluminium	D-IR3105-G5B300F-F	30-31.5mm Interchangeable Liner for Copper



SPECIFICATIONS

Max Safety Load	49kN
Min Breaking Load	150kN
Weight	7kg

ORDERING INFORMATION

D-IR3107-G7A060F-F	6mm Interchangeable Liner for Aluminium	D-IR3107-G7B060F-F	6mm Interchangeable Liner for Copper
D-IR3107-G7A065F-F	6.5-8mm Interchangeable Liner for Aluminium	D-IR3107-G7B065F-F	6.5-8mm Interchangeable Liner for Copper
D-IR3107-G7A080F-F	8-9.5mm Interchangeable Liner for Aluminium	D-IR3107-G7B080F-F	8-9.5mm Interchangeable Liner for Copper
D-IR3107-G7A095F-F	9.5-11mm Interchangeable Liner for Aluminium	D-IR3107-G7B095F-F	9.5-11mm Interchangeable Liner for Copper
D-IR3107-G7A110F-F	11-12.5mm Interchangeable Liner for Aluminium	D-IR3107-G7B110F-F	11-12.5mm Interchangeable Liner for Copper
D-IR3107-G7A125F-F	12.5-14mm Interchangeable Liner for Aluminium	D-IR3107-G7B125F-F	12.5-14mm Interchangeable Liner for Copper
D-IR3107-G7A140F-F	14-15.5mm Interchangeable Liner for Aluminium	D-IR3107-G7B140F-F	14-15.5mm Interchangeable Liner for Copper
D-IR3107-G7A155F-F	15.5-17mm Interchangeable Liner for Aluminium	D-IR3107-G7B155F-F	15.5-17mm Interchangeable Liner for Copper
D-IR3107-G7A170F-F	17-18.5mm Interchangeable Liner for Aluminium	D-IR3107-G7B170F-F	17-18.5mm Interchangeable Liner for Copper
D-IR3107-G7A185F-F	18.5-20mm Interchangeable Liner for Aluminium	D-IR3107-G7B185F-F	18.5-20mm Interchangeable Liner for Copper
D-IR3107-G7A200F-F	20-21.5mm Interchangeable Liner for Aluminium	D-IR3107-G7B200F-F	20-21.5mm Interchangeable Liner for Copper
D-IR3107-G7A215F-F	21.5-23mm Interchangeable Liner for Aluminium	D-IR3107-G7B215F-F	21.5-23mm Interchangeable Liner for Copper



The smooth round jaw contour provides maximum contact when used on bare ACSR, aluminium and standard copper conductors.

ORDERING INFORMATION	
K-1656-20	Grips 5.08-10.16mm
K-1656-30	Grips 7.87-13.46mm
K-1656-40	Grips 13.46-18.8mm
K-1656-50	Grips 18.4-21.83mm
K-1656-60	Grips 21.83-24.6mm

SPECIFICATIONS	K-1656-20	K-1656-30	K-1656-40	K-1656-50	K-1656-60
Range	5.08-10.16mm	7.87-13.46mm	13.46-18.8mm	18.4-21.83mm	21.83-24.6mm
WLL	1,150kgf	1,160kgf	2,400kgf	2,400kgf	2,400kgf
Weight	1.36kg	1.7kg	3.4kg	3.4kg	3.4kg

K-1684 GRIPS FOR HIGH STRENGTH CABLE



ORDERING INFORMATION	
K-1684-5	Grips 5.54-13.97mm
K-1684-74	Curved Grips 5.54-13.97mm
K-1684-5C	Grips 4.06-13.97mm
K-1613-40	Grips 3.05-9.4mm

SPECIFICATIONS	K-1684-5	K-1684-74	K-1684-5C	K-1613-40
Range	5.54-13.97mm	5.54-13.97mm	4.06-13.97mm	3.05-9.4mm
WLL	2,240kgf	2,240kgf	2,240kgf	1,150kgf
Weight	2.83kg	2.83kg	2.83kg	1.3kg
Jaw Profile	Standard	Curved	Aggressive	Standard

OVERHEAD LINE GRIPS



Lightweight, cost-effective grip. Designed for working with solid and stranded bare wire from 2 mm to 5.1 mm. Single "V" groove jaw.

SPECIFICATIONS	
Jaw Length	76mm
Weight	0.7kg
WLL	630kgf

ORDERING INFORMATION	
K-1613-30	Chicago Grip for Bare Wire

PARALLEL JAW GRIPS



Lightweight, compact grips pull an exceptionally wide range of cable sizes and types.

SPECIFICATIONS	K-1685-20	K-1685-31
Range	3.98-22.22mm	15.87-31.75mm
WLL	1,600kgf	1,380kgf
Weight	1.4kg	2.3kg
Jaw Length	63.5mm	114mm

ORDERING INFORMATION	
K-1685-20	3.98-22.22mm Parallel Jaw Grips
K-1685-31	15.87-31.75mm Parallel Jaw Grips

K-171670 PARALLEL JAW GRIPS FOR HDPE



SPECIFICATIONS	
Max Safe Load	1,200kgf
Cable Diameter	15.9-34.6mm
Jaw Length	114.3mm
Weight	2.31kg

ORDERING INFORMATION	
K-171670	Parallel Jaw Grips for HDPE Coated Cable



ORDERING INFORMATION

K-KT4500	4.57-15.2mm Parallel Jaw Grips
K-KT4600	7.62-20.3mm Parallel Jaw Grips
K-KT4650	4.06-22.86mm Parallel Jaw Grips
K-KT4800	17.78-31.75mm Parallel Jaw Grips

SPECIFICATIONS	K-KT4500	K-KT4600	K-KT4650	K-KT4800
Range	4.57-15.2mm	7.62-20.3mm	4.06-22.86mm	17.78-31.75mm
WLL	1,200kgf	2,970kgf	1,980kgf	2,940kgf
Weight	1.7kg	3.2kg	2kg	4.1kg
Jaw Length	102mm	127mm	114.3mm	130.2mm

K-1604 MESSENGER & GUY HAVEN'S GRIPS



Designed for use when light, compact grip is desired and where conductor damage is not a factor. Latch on K-1604-20L helps hold cable in the jaw.

ORDERING INFORMATION

K-1604-10	Grips 1.52-6.35mm
K-1604-20L	Grips 3.18-12.7mm

SPECIFICATIONS	K-1604-10	K-1604-20L
Range	1.52-6.35mm	3.18-12.7mm
WLL	720kgf	1,820kgf
Weight	1.8kg	0.95kg

K-1628 LARGE CONDUCTOR GRIPS

Custom made to individual conductor sizes to ensure maximum contact around the cable.



ORDERING INFORMATION

K-1628-16P	Grips 7.87-22.35mm
K-1628-30	Grips 21.59-31.5mm
K-1628-40	Grips 31.5-39.12mm

SPECIFICATIONS	K-1628-16P	K-1628-30	K-1628-40
Range	7.87-22.35mm	21.59-31.5mm	31.5-39.12mm
WLL	2,245kgf	4,450kgf	6,667kgf
Weight	7.71kg	12.29kg	15.47kg

K-1625-20 WIRE ROPE HAVEN'S GRIPS



SPECIFICATIONS

WLL	2,700kgf
Range	1.77-19.05mm
Weight	1.8kg

ORDERING INFORMATION

K-1625-20	Haven's Grip
-----------	--------------



ORDERING INFORMATION	
D-732-05-F	5kN Dynamometer
D-732-10-F	10kN Dynamometer
D-732-20-F	20kN Dynamometer
D-732-30-F	30kN Dynamometer
D-732-50-F	50kN Dynamometer

SPECIFICATIONS	5kN	10kN	20kN	30kN	50kN
Length	110mm	135mm	135mm	150mm	260mm
Diameter	65mm	65mm	65mm	80mm	95mm
Eye Diameter	11mm	16mm	16mm	28mm	28mm
Weight	0.7kg	0.8kg	1.2kg	2.3kg	3.5kg

D-731 DIGITAL LOAD INDICATORS



The new digital load indicators are compact measuring devices for the weighing of loads. On account of their flexibility, these load indicators are suitable for a multitude of applications. Whether used as a conventional crane weighing machine or to measure forces, it is the

economical choice for various applications.

Simple and straight forward to use. The load indicators have an LCD display.

ORDERING INFORMATION	
D-731-01-F	1,000kg Digital Dynamometer
D-731-025-F	2,500kg Digital Dynamometer
D-731-05-F	5,000kg Digital Dynamometer

SPECIFICATIONS	D-731-01-F	D-731-025-F	D-731-05-F
Range	0-1,000kg	0-2,500kg	0-5,000kg
Accuracy %	0.2	0.2	0.2
Resolution Step	1kg	1kg	1kg



STANDARD	E-858-0631	E-858-1231	E-858-1931	E-858-2531	E-858-3231	E-858-3831
Diameter Range	6-13mm	12-19mm	19-25mm	25-32mm	32-38mm	38-48mm
Min Breaking Strength	2,250kg	3,380kg	5,540kg	9,550kg	11,456kg	11,456kg
Grip Length	650mm	825mm	1025mm	1300mm	1400mm	1400mm

STRENGTHENED	E-858-1231-1	E-858-S-1631	E-858-S-1931	E-858-S-2531	E-858-S-3231	E-858-S-3831-1
Diameter Range	12-19mm	16-24mm	19-25mm	25-32mm	32-38mm	37-48mm
Min Breaking Strength	8,500kg	9,750kg	13,500kg	15,000kg	18,000kg	24,000kg
Grip Length	825mm	1100mm	1100mm	1400mm	1400mm	1400mm

E-859 HEAVY DUTY JOINTING GRIP PULLING STOCKINGS



ORDERING INFORMATION	
E-859-0630	6-13mm Heavy Duty Stocking
E-859-1230	12-19mm Heavy Duty Stocking
E-859-1930	19-25mm Heavy Duty Stocking
E-859-2530	25-32mm Heavy Duty Stocking
E-859-3230	32-38mm Heavy Duty Stocking
E-859-3830	38-48mm Heavy Duty Stocking

SPECIFICATIONS	E-859-0630	E-859-1230	E-859-1930	E-859-2530	E-859-3230	E-859-3830
Diameter Range	6-13mm	12-19mm	19-25mm	25-32mm	32-38mm	38-48mm
Min Breaking Strength	2,250kg	3,380kg	5,540kg	9,550kg	11,456kg	11,456kg
Grip Length	650mm	825mm	1025mm	1300mm	1400mm	1400mm



Lightweight, single weave pulling stocking with a single eye that is perfect for light duty cable pulling.

ORDERING INFO	E-860-0611	E-860-1011	E-860-1311	E-860-1611	E-860-1911	E-860-2511
Diameter Range	6-10mm	10-13mm	13-16mm	16-19mm	19-25mm	25-32mm
Min Breaking Strength	195kg	350kg	567kg	814kg	1,172kg	1,848kg
Grip Length	110mm	175mm	200mm	230mm	250mm	290mm

E-677 NON-CONDUCTIVE CABLE STOCKINGS



Manufactured from a man-made, high strength parallel-stranded fibre, and having a polyethylene sheath.

Non-conductive, non-corrosive and abrasive resistant. Prevents damage to other components during the pulling operation. As a support grip, long life is ensured even in hostile environments.

SPECIFICATIONS - SINGLE WEAVE					
Single Eye	E-677-1011	E-677-2011	E-677-3011	E-677-4011	
Double Eye	E-677-1012	E-677-2012	E-677-3012	E-677-4012	
Diameter Range	10-20mm	20-30mm	30-40mm	40-50mm	
Min Breaking Strength	1,120kg	1,680kg	2,240kg	2,688kg	

SPECIFICATIONS - DOUBLE WEAVE					
Single Eye	E-677-3021	E-677-4021	E-677-5021	E-677-6521	E-677-8021
Double Eye	E-677-3022	E-677-4022	E-677-5022	E-677-6522	E-677-8022
Diameter Range	30-40mm	40-50mm	50-65mm	65-80mm	80-100mm
Min Breaking Strength	4,480kg	5,376kg	7,168kg	7,168kg	7,168kg



Swivels are essential for effective pulling operations of underground cables and overhead conductors. The swivels are fitted with bearings to prevent build up of twist in the cable pulling bond. CBS swivels are precision manufactured in high-grade steel with a plated finish.

ORDERING INFORMATION	D-516	D-565	D-564	D-801	D-953
SWL	800kgf	1,600kgf	3,500kgf	4,500kgf	7,260kgf
Diameter	26mm	34mm	37mm	40mm	64mm
Length	105mm	108mm	135mm	142mm	260mm
Jaw Opening	10mm	15mm	15mm	15mm	24.75mm
Pin Diameter	8mm	10mm	12.7mm	14mm	21.9mm
Weight	0.26kg	0.55kg	0.75kg	0.85kg	4.54kg

D-566 FUSED SWIVELS



Fused swivels are used in applications where the pulling force must not be exceeded. The fuses are replaceable and allow the swivel to break when the maximum applied load equals the rating of the fuse.

SPECIFICATIONS	
Body Diameter	22mm
Body Length	105mm
Jaw Opening	10mm
Weight	0.2kg

ORDERING INFORMATION	
D-566-01-F	Fused Swivel body 22mm
D-566-02-F	3kN Shear Pin x10
D-566-03-F	2kN Shear Pin x10
D-566-04-F	4kN Shear Pin x10
D-566-08-F	8kN Shear Pin x10

Rope Connectors provide as an effective method of jointing pulling grips.



ORDERING INFORMATION	
D-956	500kg Rope Connector
D-1043	1,000kg Rope Connector
D-1169	3,500kg Rope Connector
D-802	4,500kg Rope Connector
D-1164	6,000kg Rope Connector
D-1164-01	6,000kg Rope Connector - Clevis Jaw

SPECIFICATIONS	D-956	D-1043	D-1169	D-802	D-1164	D-1164-01
SWL	500kg	1,000kg	3,500kg	4,500kg	6,000kg	6,000kg
Diameter	16mm	22mm	37mm	40mm	50mm	50mm
Length	51mm	55mm	88mm	90mm	108mm	124mm
Jaw Opening	7.5mm	9mm	15mm	15mm	18mm	18mm
Pin Diameter	5mm	7mm	12.73mm	14mm	16mm	16mm
Weight	0.04kg	0.09kg	0.45kg	0.52kg	1.04kg	0.9kg

D-146 CONDUCTIVE SWIVEL



Conductive swivels are suitable for passage of induced currents whilst refurbishing OHL conductors on transmission lines.

ORDERING INFORMATION	
D-146	Conductive Swivel With Copper Braids

SPECIFICATIONS	
Current Rating	225A
Length	165mm
Diameter	40mm
Jaw Width	15mm
Weight	1.6kg
SWL	3,500kg



Connector Assemblies are provided as an effective method of joining two-cable pulling grips together when pulling O/H conductors. This Insulated Connector, designed to meet National Grid Specifications has been designed to insulate the joined Pulling Grips to stop the transfer of Induced Currents travelling along the length of conductor.

SPECIFICATIONS

Length	192mm
Diameter	40mm
Centres	160mm
Jaw Width	15.25mm
Pin Diameter	14mm
Weight	1.3kg
SWL	4,500kg

ORDERING INFORMATION

D-1082-001	Insulated Connector Assembly
------------	------------------------------

D-900 SWIVEL ESI 43/40 POLE PLATFORM



Manufactured in tubular aluminium, incorporating a non-slip open plate platform. Platforms have a safe working load of 250kg. All models feature a serrated pole gripping device and are lightweight and simple to apply.

SPECIFICATIONS

D-900-15-1

D-900-20-1

Length	1.5m	2.0m
Weight	30kg	40kg
Length	1700mm	2260mm
Width	510mm	600mm
Height	920mm	940mm



SPECIFICATION	
Dimensions	12m x 35cm x 1.4m
Weight	116kg

These working platforms provide linesmen with a safe working area at tension towers. They are manufactured from welded aluminium pipes to form a rigid structure. In the centre they are equipped with a suspension device and at both ends anchoring points.

D-457 GROUND ANCHOR



The screw type ground anchor provides secure anchorage points when operating on site. Manufactured in high quality steel to provide safe and firm location points when pulling and holding.

ORDERING INFORMATION	D-457-06-F	D-457-08-F	D-457-10-F
Disc Diameter	150mm	200mm	250mm
Shaft Diameter	20mm	25mm	28mm
Length	750mm	1200mm	1500mm
Weight	2.7kg	6.8kg	12.2kg

D-804 GROUND ANCHOR SET



A sturdy ground anchor designed for use where near horizontal loads are being applied. Fixed by the insertion of eight pins.

SPECIFICATIONS	
Weight	62kg
SWL	3,000kg

ORDERING INFORMATION	
D-804	Ground Anchor Set

D-498 POLE ERECTING PIKES



Wooden poles can be safely erected with two men deploying these lightweight pole pikes. Manufactured in aluminium tube with double pole spikes, push up handle and ground spike. Usually supplied in pairs of 3 or 4 varying lengths per set.

ORDERING INFORMATION	D-498-20	D-498-30	D-498-40	D-498-50
Length	2m	3m	4m	5m
Weight	8kg	9kg	11kg	14kg

TENSIONING SHOE



ORDERING INFORMATION	
D-822	Tensioning Shoe
D-325	Tensioning Shoe

SPECIFICATIONS	D-822	D-325
Shipping Weight	3.7kg	2.0kg
SWL	820kg	2,000kg

Ideally suited for transporting poles across rough terrain or soft ground. The poles are secured with quick action retaining straps.

Also available is the towing eye and strap for towing by vehicles (off-road towing only), and narrow versions for when restricted access is required.



ORDERING INFORMATION

D-710-1	Pole Bogie Low Pressure Tyres
D-710	Pole bogie Standard Tyres
D-710-8	Pole Bogie 500mm Wide
D-710-2	Towing Eye and Strap

SPECIFICATIONS	D-710-1	D-710	D-710-8
Length	1200mm	1200mm	1200mm
Width	1260mm	1075mm	500mm
Height	560mm	560mm	560mm
Weight	70kg	70kg	34kg
Tyres	Low Pressure	Standard	Standard



D-837-01 STAYWIRE DISPENSER

An essential aid for handling stay wire coils, robustly constructed in steel tube having a plated finish. Removable side arm for ease of loading, automatically feeds wire as drawn off by operator.



SPECIFICATIONS

Dimensions	950 x 410mm
Weight	8kg

ORDERING INFORMATION

D-837-01	Staywire Dispenser
----------	--------------------

D-929-01 CROSSARM LIFTER

This lightweight Aluminium Crossarm Lifter is ideal for raising even the largest crossarms to ESI 4340 to the top of any pole.

The lifter, which has a safe weight lift of 100kg, rests on the pole top and is strapped in position with a liberally rated chain plus toggle screw.

The Sheave is securely caged to prevent the lifting rope escaping while in action.



SPECIFICATIONS

Weight	13.18kg
--------	---------

ORDERING INFORMATION

D-929-01	Crossarm Lifter
----------	-----------------

D-840 YALE ERGO LEVER HOIST



Little effort is required to operate this high quality aluminium ratchet lever hoist. Offering faultless chain movement due to the guide being cast into the body and free chaining.

ORDERING INFORMATION	D-840-07-ERGO	D-840-15-ERGO	D-840-30-ERGO	D-840-60-ERGO
Capacity	750kg	1,500kg	3,000kg	6,000kg
Lift	1500mm	1500mm	1500mm	1500mm
Chain Dims	5.6 x 17.1mm	7.1 x 21mm	10 x 28mm	10 x 28mm
Weight	6.6kg	9.5kg	16.8kg	28.6kg

D-840 YALE HANDY LEVER HOIST



Smallest and lightest in the Yale range, making it suitable for a multitude of applications. Its size makes it easy to use, and ideal for tight working environments. The free chaining device allows for fast load attachment.

ORDERING INFORMATION	D-840-02-F	D-840-05-F
Capacity	250kg	500kg
Lift	1500mm	1500mm
Chain Dims	4 x 12mm	4 x 12mm
Weight	2.2kg	2.8kg

D-840 YALE PT LEVER HOIST



The universal PT series lever hoists feature pressed steel housings and are extremely lightweight. The PT series are ideal for applications where economy is a decisive factor.

ORDERING INFORMATION	D-840-07-F	D-840-15-F	D-840-30-F	D-840-60-F
Capacity	800kg	1,600kg	3,200kg	6,300kg
Lift	1500mm	1500mm	1500mm	1500mm
Chain Dims	5.6 x 17.1mm	7.1 x 21.2mm	9 x 27.2	9 x 27.2
Weight	5.5kg	9.6kg	16kg	31kg

D-1143 YALE UNOPLUS LEVER HOIST



These versatile ratchet lever hoists are compact, lightweight and feature stamped steel construction. The units represent superb economy and ship complete with free chaining device for fast load attachment.

ORDERING INFORMATION	D-1143-07-F	D-1143-15-F	D-1143-30-F	D-1143-60-F
Capacity	750kg	1,500kg	3,000kg	6,000kg
Lift	1500mm	1500mm	1500mm	1500mm
Chain Dims	6 x 18mm	8 x 24mm	10 x 30mm	10 x 30mm
Weight	7.2kg	12.5kg	21.5kg	32kg

D-785 MINI RATCHET PULLER



Specially designed and developed to meet the specific needs of linemen for tensioning applications. The units are compact and lightweight, easy to operate in any position and feature a ratchet and automatic brake.

SPECIFICATIONS	D-785-10-F	D-785-15-F
Capacity	1,000kgf	1,500kgf
Wire Diameter	5	6.3
Wire No.	2	2
Min Length	410mm	450mm
Max Length	1210mm	1220mm
Weight	3.15kg	4.3kg

ORDERING INFORMATION

D-785-10-F	1,000kg Ratchet Puller
D-785-15-F	1,500kg Ratchet Puller

D-785 INSULATED WEB STRAP MINI RATCHET PULLER



	D-785-10-WS-F	D-785-15-WS-F
Capacity	1,000kgf	1,500kgf
Strap Size	2 x 33mm	2 x 40mm
Min Length	440mm	470mm
Max Length	1940mm	1970mm
Weight	3.3kg	4.6kg

RATCHET PULLERS

ORDERING INFORMATION

D-785-10-WS-F	1,000kg Ratchet Puller
D-785-15-WS-F	1,500kg Ratchet Puller

Designed to be compact and lightweight for tensioning applications (not for lifting).

D-786 RATCHET PULLERS - RICKY 2 & 3

SPECIFICATIONS	D-786-07-2-F Ricky 2	D-786-15-F Ricky 3
Capacity	750kg	1,500kg
Chain Diameter	5mm	5mm
Min Length	300mm	350mm
Max Length	1,800mm	1,850mm
Lever Length	230mm	230mm
Pull Length	1.5m	1.5m
Weight	4kg	5kg



Ricky 2



Ricky 3

D-803 MINI RATCHET PULLERS



SPECIFICATIONS	D-803-F	D-803-13-F	D-803-18-F	D-803-22-F	D-803-25-F
Capacity	750kg	750kg	750kg	750kg	750kg
Chain Diameter	5mm	5mm	5mm	5mm	5mm
Min Length	330mm	330mm	330mm	330mm	330mm
Max Length	1,100mm	1,300mm	1,800mm	2,200mm	2,500mm
Lever Length	400mm	400mm	400mm	400mm	400mm
Pull Length	1.1m	1.3m	1.8m	2.2m	2.5m
Weight	3.8kg	4.2kg	4.4kg	4.6kg	4.8kg

D-477 TIRFOR ROPE HOIST



Ideal lifting and pulling device where long strokes are required. 20m of rope supplied as standard, longer ropes available on request.

ORDERING INFORMATION

D-477-08T-F	800kg Tirfor Cable Puller
D-477-16T-F	1,600kg Tirfor Cable Puller
D-477-32T-F	3,200kg Tirfor Cable Puller

SPECIFICATIONS	D-477-08T-F	D-477-16T-F	D-477-32T-F
Lifting Capacity	800kg	1,600kg	3,200kg
Pulling Capacity	1,250kgf	2,500kgf	5,000kgf
Rope Diameter	8.4mm	11.5mm	16mm

D-477 YALETRAC CABLE PULLERS

Yaletrac cable pullers feature a lightweight, compact, high strength aluminium housing, smooth contour design with a large, flat bottom surface for increased stability in horizontal and vertical working positions.



ORDERING INFORMATION

D-477-08Y-F	800kg Yaletrac Cable Puller
D-477-16Y-F	1,600kg Yaletrac Cable Puller
D-477-32Y-F	3,200kg Yaletrac Cable Puller

SPECIFICATIONS	D-477-08Y-F	D-477-16Y-F	D-477-32Y-F
Capacity	800kg	1,600kg	3,200kg
Rope Diameter	8.4mm	11.5mm	16mm



This machine has been designed to measure lengths of overhead cables. The unit is hung on the cable and a vertically movable pulley is used to clamp the measuring wheel to the cable. A shackle is provided to enable the machine to be pulled along. A mechanical counter then displays the length/distance that the machine has moved. Its primary use is for positioning of spacers on overhead power lines. Can accommodate cable sizes between 8-43mm diameters.

ORDERING INFORMATION

D-557-4-F	Overhead Cable/Rope Measuring Device
-----------	--------------------------------------

D-914 RIDGID ACSR CABLE TRIMMER



Fast, accurate cable splice preparation. The bushing holder, cutter and handy carrying case are sold as one unit. Case contains storage sockets for 11 bushings.

SPECIFICATIONS

Weight	2.8kg
--------	-------

ORDERING INFORMATION

D-914-RIDGID-87-F	ACSR Cable Trimmer
D-914-RIDGID-87-01-F	Ridgid Cutter wheel No.87

D-914 RIDGID BUSHINGS



Multiple bushing types are available to fit the RIDGID ACSR tool.

ORDERING INFORMATION

D-914-RIDGID-HORSE	70mm ²
D-914-RIDGID-LYNX	175mm ²
D-914-RIDGID-ZEBRA	400mm ²
D-914-RIDGID-CROW	361.6mm ²
D-914-RIDGID-OSLOW	325mm ²
D-914-RIDGID-WOLF	150mm ²
D-914-RIDGID-LONDON	780mm ²
D-914-RIDGID-MATTHEW	56.3mm ²

D-257 DOUBLE PODGER RATCHET



Ratchet facility in both directions, two sizes per wrench.

ORDERING	Flat Size	Bolt Size
D-251-1014-F	10x14mm	M6xM8
D-257-1113-F	10x13mm	$\frac{1}{4} \times \frac{5}{16}$
D-257-1317-F	13x17mm	M8xM10
D-257-1719-F	17x19mm	M10xM12
D-257-1921-F	19x21mm	$\frac{7}{16} \times \frac{1}{2}$

ORDERING	Flat Size	Bolt Size
D-257-1924-F	19x24mm	M12xM16
D-257-2126-F	21x26mm	$\frac{1}{2} \times \frac{5}{8}$
D-257-2430-F	24x30mm	M16xM20
D-257-2632-F	26x32mm	$\frac{5}{8} \times M22$
D-257-3032-F	30x32mm	M20xM22
D-257-3235-F	32x35mm	$\frac{3}{4} \times \frac{7}{8}$
D-257-3236-F	32x36mm	M22xM24
D-257-3541-F	35x41mm	$\frac{7}{8} \times 1$
D-257-3641-F	36x41mm	M24xM27
D-257-4146-F	41x46mm	M27xM30

D-258 DOUBLE RATCHET SPANNER

A universal tool, ratchet facility in both directions, two sizes per wrench. Sizes from 13 x 17 to 30 x 32mm A/F.



ORDERING	Flat Size	Bolt Size
D-258-1317-F	13x17mm	M8xM10
D-258-1719-F	17x19mm	M10xM12
D-258-1921-F	19x21mm	$\frac{7}{16} \times \frac{1}{2}$
D-258-2126-F	21x26mm	$\frac{1}{2} \times \frac{5}{8}$
D-258-2224-F	22x24mm	M14xM16
D-258-2427-F	24x27mm	M16xM18
D-258-2430-F	24x30mm	M16xM20
D-258-3032-F	30x32mm	M20xM22

G-GMP-75248 ACSR RATCHET CUTTERS



Designed for cutting ACSR Conductors up to 23mm diameter.

SPECIFICATIONS

Length	457mm
Weight	1.81kg

ORDERING INFORMATION

G-GMP-75248	Heavy Duty Ratchet Cutter
-------------	---------------------------

G-GMP-75249 ACSR QUICK RELEASE RATCHET CUTTERS



Quick action Ratchet Cutters designed for use on Copper & Aluminium cables. (Not for Steel)

SPECIFICATIONS

Length	457mm
Weight	1.9kg

ORDERING INFORMATION

G-GMP-75249	Quick Release Heavy Duty Ratchet Cutter
-------------	---

G-GMP-75247 CABLE CROPPERS



Designed for cutting Copper & Aluminium Cables (not suitable for steel or ACSR).

SPECIFICATIONS

Length	220mm
Weight	0.28kg

ORDERING INFORMATION

G-GMP-15304	Cable Croppers
-------------	----------------



Designed for cutting Copper & Aluminium cable(not suitable for steel or ACSR)

SPECIFICATIONS	
Max Cable Diameter	32mm
Length	533mm
Weight	1.5kg

ORDERING INFORMATION	
G-GMP-75246	32mm Cable Croppers for Aluminium and Copper

G-GMP-75247 CABLE CROPPERS



Designed for cutting Copper & Aluminium cable(not suitable for steel or ACSR)

SPECIFICATIONS	
Max Cable Diameter	50mm
Length	813mm
Weight	4kg

ORDERING INFORMATION	
G-GMP-75247	50mm Cable Croppers for Aluminium and Copper

D-805 HYDRAULIC CUTTERS



Hand operated hydraulic cutters, designed to increase speed and reduce effort of cutting conductors and cables whilst providing a superior finish.

Models D-805-04-F & D-805-05-F are two-speed for faster operation.

ORDERING INFORMATION	
D-805-025-F	25mm Hydraulic Cutters
D-805-04-F	45mm Hydraulic Cutters
D-805-05-F	50mm Hydraulic Cutters
D-805-085-F	85mm Hydraulic Cutters

SPECIFICATIONS	D-805-025	D-805-04-F	D-805-05-F	D-805-085
Cu/Al Cable	25	45	50	85
Cu/ACSR Conductor	25	45	-	-
Weight	3.2kg	5.8kg	4.4kg	6.6kg

K-63607 ACSR RATCHET CABLE CUTTER



Designed for cutting up to 170mm² ACSR, 185mm² Copper and 300mm² Aluminium.

SPECIFICATIONS

Length	261mm
Weight	0.7kg

ORDERING INFORMATION

K-63607	ACSR Ratchet Cable Cutter
---------	---------------------------

K-63050 HIGH LEVERAGE CABLE CUTTER



Ideal for working in confined spaces. Designed for cutting Copper & Aluminium Cables (not suitable for steel or ACSR).

SPECIFICATIONS

Length	242mm
Weight	0.5kg

ORDERING INFORMATION

K-63050	High Leverage Cable Cutter
---------	----------------------------

K-63060 RATCHET CABLE CUTTERS



Quick action Ratchet Cutters designed for cutting up to 18mm Copper & Aluminium cables up to 22mm. (Not for Steel or ACSR).

SPECIFICATIONS

Length	261mm
Weight	0.6kg

ORDERING INFORMATION

K-63060	Ratchet Cable Cutters
---------	-----------------------

K-63711 OPEN JAW CABLE CUTTERS



Quick action Ratchet Cutters designed for use on Copper & Aluminium cables up to 25mm (Not for Steel or ACSR)

SPECIFICATIONS

Length	292mm
Weight	0.9kg

ORDERING INFORMATION

K-63711	Open Jaw Ratchet Cable Cutter
---------	-------------------------------

K-63750 RATCHET CABLE CUTTERS



Quick action Ratchet Cutters designed for use on Copper & Aluminium cables up to 28mm. (Nor for steel or ACSR).

SPECIFICATIONS

Length	308mm
Weight	0.8kg

ORDERING INFORMATION

K-63750	Ratchet Cable Cutter
---------	----------------------

K-63016 HEAVY DUTY CABLE SHEARS



Cuts up to 6.4mm copper and mild steel, up to 4.8mm aircraft cable, wire rope and aluminium and steel and iron rods up to 4mm.

SPECIFICATIONS

Length	190.5mm
Weight	0.29kg

ORDERING INFORMATION

K-63016	Heavy Duty Cable Shears
---------	-------------------------

K-63700 HEAVY DUTY RATCHET CUTTERS



Designed for cutting ACSR Conductors up to 31mm. Ratchet-action design of this provides maximum leverage with minimum effort. Forged, heat-treated, shear-type blades cut steel and ACSR. Blade-advance knob quickly rotates the blade to engage the cable or other material being cut.

ORDERING INFORMATION

K-63700	Heavy Duty Ratchet Cutters
---------	----------------------------

SPECIFICATIONS

Length	711mm
Weight	6.4kg

K-63800ACSR ACSR RATCHET CABLE CUTTERS



Designed for cutting ACSR Conductors up to 22mm in diameter in addition to 25mm Copper, 31mm Aluminium. They have high-leverage ratcheting mechanisms for easier cutting, and can be locked when not in use.

ORDERING INFORMATION

K-63800ACSR	ACSR Ratchet Cutters
-------------	----------------------

SPECIFICATIONS

Length	356mm
Weight	1.5kg

STANDARD CABLE CUTTERS



The Standard Cable Cutters feature replaceable hook-jaw blades made of forged tool steel that grab and hold cable while the shear-cutting action makes clean cuts. The exceptionally strong fiberglass handles have heavy vinyl grips for added comfort and slip resistance. NOT suitable for cutting Steel or ACSR.

ORDERING INFORMATION

K-63041TH

K-63045

Length	648mm / 25"	813mm / 32"
Weight	2.4kg	3.7kg
Cutting Capacity	35mm 240mm ² Copper / 300mm ² Aluminium	44mm 500mm ² Copper / 600mm ² Aluminium



All purpose bolt cutters with fibreglass handles fitted with heavy vinyl grips with flat grips ends for 90° cuts. Centre-cut jaws for soft, medium and hard metals. Not suitable for cable cutting.

ORDERING INFORMATION	K-63118	K-63124	K-63136
Length	463mm	622mm	927mm
Weight	1.7kg	2.8kg	5.9kg
Soft/Med Material Max Capacity	9.5mm	11mm	14mm
Hard Material Max Capacity	6.4mm	7.9mm	11mm

STEEL HANDLE BOLT CUTTERS



All purpose bolt cutters with steel handles fitted with heavy vinyl grips with flat grips ends for 90° cuts. Centre-cut jaws for soft, medium and hard metals. Not suitable for cable cutting.

ORDERING INFORMATION	K-63314	K-63318	K-63324	K-63336
Length	355.6mm	457mm	610mm	915mm
Weight	1.45kg	1.6kg	2.9kg	6.5kg
Soft/Med Material Max Capacity	7.9mm	9.5mm	11mm	14mm
Hard Material Max Capacity	4.8mm	6.4mm	7.9mm	11mm



The 2000 series blades are designed for heavy-duty cutting of ACSR, screws, nails, and most hardened wire. The high-leverage design provides 46-Percent greater cutting power than other plier designs. Exclusive handle tempering absorbs the "snap" when cutting wire. Not insulated.

SPECIFICATIONS	
Length	238mm
Weight	0.5kg
Jaw Dimensions	40.5 x 32mm
Nose Type	New England

ORDERING INFORMATION	
K-D20009NE	Side Cutting Linesman's' Pliers

K-D20009NETP FISH TAPE PULLING **LINESMANS PLIERS**



These Linesman's Side-Cutting pliers quickly and easily pull 1/8" (3 mm) or 1/4" (6 mm) flat steel fish tape without damaging the tape. Cuts ACSR, screws, nails, and most hardened wire. Not insulated.

SPECIFICATIONS	
Length	238mm
Weight	0.5kg
Jaw Length	40.5 x 32mm
Nose Type	New England

ORDERING INFORMATION	
K-D20009NETP	Fish Tape Linesman's' Pliers

K-D2139 SQUARE NOSE **LINESMANS PLIERS**



These High-Leverage, Side-Cutting Pliers feature a square nose for twisting and grabbing wires. The rivet is closer to the cutting edge for 46-Percent more cutting and gripping power than other pliers. Induction hardened cutting knives are extra durable for longer life. The exclusive handle tempering absorbs the "snap" when cutting wire.

SPECIFICATIONS	
Length	238mm
Weight	0.5kg
Jaw Dimensions	41 x 32mm
Nose Type	Square

ORDERING INFORMATION	
K-D2139	Square Nose Lineman's Pliers

K-D2139NETT 9" SIDE CUTTERS



These side cutting pliers feature a split ring for tethering pliers while working at height. The high-leverage design provides greater cutting and gripping power.

SPECIFICATIONS

Length	238.1mm
Weight	0.5kg
Jaw Width	31.8mm
Jaw Capacity	38.1mm

ORDERING INFORMATION

K-D2139NETT	9" Side Cutters
-------------	-----------------

K-D2139STT REBAR WORK PLIERS



Twists and cuts soft annealed rebar tie wire. Includes split ring for tethering plier while working at height. High-leverage design for greater cutting and gripping power. Hook bend handle and heavy duty knurled jaws.

SPECIFICATIONS

Length	238.1mm
Weight	0.5kg
Jaw Width	31.8mm
Jaw Capacity	12.7mm

ORDERING INFORMATION

K-D2139STT	Rebar Work Pliers
------------	-------------------

K-D2017CSTT SLIM REBAR WORK PLIERS



These slim ironworker's pliers feature a split ring for tethering pliers while working at height. All of the features of Klein pliers plus the added safety of a tether ring. The slim design twists and cuts soft annealed rebar tie wire.

SPECIFICATIONS

Length	228.6mm
Weight	0.31kg
Jaw Width	31.8mm
Jaw Capacity	15.4mm

ORDERING INFORMATION

K-D2017CSTT	Slim Rebar Pliers
-------------	-------------------

K-D209-5C DIAGONAL CUTTING PLIERS



These Klein Tools 5-Inch Electronics Pliers have a narrow jaw and hinge with a sharp, pointed nose for precise tip cutting and trimming of printed circuit boards.

SPECIFICATIONS

Length	129mm
Weight	86g
Jaw Width	14mm
Jaw Capacity	16mm

ORDERING INFORMATION

K-D209-5C	Electronics Diagonal Cutting pliers
-----------	-------------------------------------

K-D2288TT HIGH LEVERAGE DIAGONAL CUTTERS



These high-leverage diagonal cutters feature a split ring for tethering pliers while working at height. The rivet is closer to the cutting edge for greater cutting power while the angled head design allows for easy access in confined spaces. Short jaws and beveled cutting edges allow close cutting of wire.

SPECIFICATIONS

Length	203.2mm
Weight	0.31kg
Jaw Width	31.8mm
Jaw Capacity	25.4mm

ORDERING INFORMATION

K-D2288TT	High Leverage Diagonal Cutter
-----------	-------------------------------

K-D2489STT REBAR WORK DIAGONAL CUTTERS



These ironworker's pliers feature a split ring for tethering pliers while working at height. The 13-Degree angled head makes it easier to work in confined spaces while the hooked handle improves the grip and reduces slippage. This pair will be your go-to tool when working with soft annealed rebar tie wire.

SPECIFICATIONS

Length	228.6mm
Weight	0.31kg
Jaw Width	31.8mm
Jaw Capacity	25.4mm

ORDERING INFORMATION

K-D2489STT	Rebar Work Diagonal Cutters
------------	-----------------------------

PUMP PLIERS WITH TETHER RING



Quick-adjust rivet allows one-handed fast, easy adjustment of plier jaws with a secure tongue and groove design for non slip grip - even with heavy pressure.

ORDERING INFORMATION	K-D5026TT	K-D50210TT	K-D50212TT
Length	203.2 x 50.8 x 6.4mm	285.8 x 69.9 x 12.7mm	330.2 x 9.5 x 44.5mm
Weight	0.19kg	0.43kg	0.6kg
Jaw Capacity	22mm	44.5mm	60.3mm

K-63028 CABLE CUTTER 3/4" CAPACITY



The Coaxial Cable Cutter is designed to handle most cable installation applications cutting up to 3/4-Inch aluminum and copper coaxial cable. Provides precision, one-hand shearing without compression or frayed ends. Forged body with heat-treated and precision-ground steel blades, withstands frequent cutting.

ORDERING INFORMATION	
K-63028	Cable Cutter 3/4"

SPECIFICATIONS	
Length	210mm
Weight	363g
Cutting Capacity	19mm

K-50712 EXTRA CAPACITY ADJUSTABLE WRENCH



ORDERING INFORMATION	
K-50712	12" Adjustable Wrench

SPECIFICATIONS	
Length	311mm
Weight	0.8kg
Jaw Capacity	38mm

K-80936MF MILLED-FACE **LINESMAN'S HAMMER**



One milled face for driving staples used in pole-line work and common, unhardened nails. Other face is smooth for driving heavier duty hardware. Rugged and well-balanced, with the weight to drive lag bolts.

ORDERING INFORMATION

K-80936MF

Linesman's Milled Face Hammer

SPECIFICATIONS

Length	356mm
Weight	1.1kg
Head Weight	1021g

K-3238 1/2" RATCHETING **CONSTRUCTION WRENCH**



Klein Tools' Adjustable-Head Construction Wrench is forged from durable, select alloy steel with corrosion resistant finish. A continuous-taper handle helps align bolt and rivet holes.

ORDERING INFORMATION

K-3238

1/2" Ratcheting Construction Wrench

SPECIFICATION

Length	381mm
Weight	1kg

K-6027DD 7" **DEMOLITION SCREWDRIVER**



Engineered, manufactured and tested for prying and chiselling. Plated metal strike capto protect handle from hammer blows.

ORDERING INFORMATION

K-6027DD

7" Demolition Screwdriver

SPECIFICATIONS

Length	314mm
Weight	0.25kg
Shank Length	7" (178mm)
Tip Type	Keystone
Tip Size	$\frac{5}{16}$ " (7.9mm)

K-44006 2- ⁵/₈" LOCKBACK KNIFE



ORDERING INFORMATION

K-44006

Lockback Knife

SPECIFICATIONS

Length	168.3mm
Closed Length	98.4mm
Blade Length	66.7mm
Weight	37g

Sheep foot blade is AUS 8 stainless-steel hardened to 58-59 RC. Slim and comfortable silver anodized-aluminium handle for corrosion-resistance.

K-44037 SPORTSMAN KNIFE DROP POINT



ORDERING INFORMATION

K-44037

Sportsman Knife Drop Point

Klein's Sportsman Knife is the perfect tool for your extracurricular activities. The blade is stainless steel for long life. Ergonomic handle provides firm, comfortable grip.

SPECIFICATION

Overall Length	222mm
Blade Length	86mm
Closed Length	127mm
Weight	0.05kg

K-48036 COMBINATION KNIFE AND SCISSORS SHARPENER



SPECIFICATIONS

Dimensions	101.6 x 57.2 x 19.1mm
Weight	0.05kg

ORDERING INFORMATION

K-48036

Knife and Scissor Sharpener

K-KT151T LINESMAN'S RATCHETING WRENCH



The Klein Tools' Ratcheting Lineman's Wrench is great for utility work. Its 3/4-Inch and 1-Inch x 1-18-Inch combination square socket works with the most common utility hardware. A bolt-through design allows bolts to pass through the socket. 8 points.

SPECIFICATIONS

Length	33cm
Weight	1.0kg

ORDERING INFORMATION

K-KT151T	Lineman's Ratcheting Wrench
----------	-----------------------------

K-68005 CAN WRENCH



ORDERING INFORMATION

K-68005	Can Wrench
---------	------------

SPECIFICATIONS

Length	178mm
Weight	159g
Socket Size	3/8" and 7/16" Hex Nut

The Klein Tools Can Wrench delivers 2-in-1 versatility and performance with a drop-forged construction, made from steel alloy. This tool allows you to open telephone box fasteners with one end and tighten nuts on binding-post terminals with the other.

L-STYLE 9 PIECE METRIC ALLEN KEY SET



The L-style hex keys are organized in a convenient, durable caddy. The keys are made of top-grade alloy steel in rust and corrosion resistant surfaces.

Contains: 1.5mm, 2mm, 2.5mm, 3mm, 4mm, 5mm, 6mm, 8mm & 10mm

ORDERING INFORMATION

K-LMK10	L-Style 9 Piece Allen Key Set
K-BLMK10	L-Style Ball End 9 Piece Allen Key Set



This Klein Tools Fox Wedge is designed for splitting mating surfaces. Its especially useful in marine conditions, because it's made of stainless steel which is resistant to corrosion. The stainless steel also provides greater hardness.

SPECIFICATIONS	
Dimensions	102 x 25mm
Thickness	80mm
Weight	100g

ORDERING INFORMATION	
K-7FWSS10025	Stainless Steel Fox Wedge 4"

ADJUSTABLE SPUD WRENCH



Eliminates the need for carrying several fixed-size wrenches. Precision-machined jaws are individually chosen and assembled by hand for smooth operation. Heat-treated for long life. Knurl turns smoothly for easy operation.

ORDERING INFORMATION	K-3227	K-3239
Length	11" (279.4mm)	16" (406.4mm)
Weight	0.5kg	1.1kg
Jaw Capacity	1 ⁵ / ₁₆ " (33.3mm)	1 ¹ / ₂ " (38.1mm)

US HEAVY ERECTION WRENCH



Forged from select alloy steel to withstand high-leverage and heavy loads. Continuous taper of handle makes lining-up bolt holes easy and works on a range of bolt and/or hole sizes without binding. Cross-hole with no sharp edges for tethering.

ORDERING INFORMATION	K-3212TT	K-3213TT	K-3214TT
Length	422.3mm	441.3mm	457.2mm
Weight	0.9kg	1.2kg	1.5kg
Head Width	63.5mm	76.2mm	92.1mm
Bolt Size	19.1mm	22.2mm	25.4mm
Taper Diameter	25.4-6.4mm	28.6-7.1mm	28.6-6.4mm

BROAD HEAD BULL PIN



Klein Tools Broad-Head Bull Pins are machined from quality alloy steel to resist corrosion and mushrooming. Their angled head and smooth blending of radii increase strength and reduce the danger of chipping. The tether hole allows you to fasten to tether for safety when working at height.

ORDERING INFORMATION	K-3255	K-3255TT	K-3256	K-3256TT
Dimensions	349.3 x 31.8mm	349.3 x 31.8mm	254 x 27mm	254 x 27mm
Point Diameter	7.9mm	7.9mm	6.4mm	6.4mm
Weight	1.3kg	1.3kg	0.7kg	0.7kg
Tether Hole	No	Yes	No	Yes

K-3259 TETHER HOLE BULL PIN



SPECIFICATIONS	K-3259TT	K-3259TTS
Dimensions	304.8 x 33.3mm	304.8 x 33.3mm
Point Diameter	11.1mm	11.1mm
Weight	1kg, Steel	1.1kg, Stainless Steel

Klein Tools Bull Pins are manufactured for durability. The tether hole allows you to fasten to tether for easy access and safety when working at height., while the vertical slot keeps the pin aligned when hanging.

K-3246TT 36" ROUND BAR



SPECIFICATIONS	
Dimensions	914.4 x 22.2mm
Weight	2.4kg
End	15°

Cross hole with no sharp edges for tethering when working at height. Chisel end is at a 15-degree angle for even greater leverage.

ORDERING INFORMATION	
K-3246TT	36" Round Bar



Spur type adjustable climbers; make easy work of pole climbing. Comfort pads, and calf and ankle straps, replacement gaffs. A complete range of spare parts and sharpening equipment is available.

SPECIFICATIONS

Weight	2.7kg
--------	-------

ORDERING INFORMATION

K-CN1972AR	Pole Climbing Irons
------------	---------------------

SPARE PARTS

K-1945G	Removable Gaff Protectors
K-1972AR	1 1/2" Gaffs
K-1972G	Snap On Gaff Guard
K-530118	Calf Straps 22"
K-530119	Calf Straps 26"
K-530120	Ankle Straps
K-72	Replacement Gaffs
K-8210	Comfort Pads
K-8220	Velcro Climber Pads
K-KG-2	Gaff Sharpening Kit



K-2214 HYDRA-COOL CLIMBER PADS



Klein Tools Hydra-Cool Climber Pads feature an exclusive bi-layer comfort system - two-layers of padding for superior comfort and support. The top layer is moisture-wicking with cooling and thermal insulating properties. The bottom layer features PORON cushioning that absorbs impact, resists water, and conforms to the leg for comfort. Sold in pairs, one size fits most.

Also available as Hydra-cool Pole Climber System - K-221486

K-5266N-20D SEMI-FLOATING BODY BELT



Klein-Kord® belt pad with two pocket tabs. Padded for maximum comfort and body fit and rolled-edge leather belt cushion for comfort when leaning back. Four suspender rings, tape thong and glove-bag ring, two-way knife snap and forged circle D-rings.

SPECIFICATIONS

Waist Size	34 - 42" / 86.4 - 106.7cm
Overall Width	4.75" / 12.1 cm
Anchor Points	2

ORDERING INFORMATION

K-5266N-20D	Semi-Floating Body Belt
-------------	-------------------------

K-KG52956-6L POSITIONING STRAP 78"



SPECIFICATIONS

Maximum Length	2m / 6'6"
Minimum Length	1.4m / 4'6"
Pole Diameter	254.4 - 53.3cm / 10" - 21"

ORDERING INFORMATION

K-KG52956-6L	Positioning Strap 78"
--------------	-----------------------

Klein's positioning straps work with Klein's climbing equipment for linemen. Made with exceptionally strong and long-lasting Klein-Kord, the straps are adjustable within a 2'3" range. Features a Gard snap hook with 5000 lb. (2268 kg) gate strength.

LINEMAN WORK GLOVE



Durably constructed to withstand the day-to-day abuse lineman's hands take. The 4-Inch (102 mm) leather and Neoprene cuffs with side vents offer protection from the outside elements.

ORDERING INFORMATION

K-40082	Lineman Work Glove - Large
K-40084	Lineman Work Glove - X Large

JOURNEYMAN CUT RESISTANT GLOVE



Klein Tools iconic Journeyman gloves are designed for today's jobsite demands. Constructed of the latest high-quality high-tech materials available, these CE Cut Level 5 gloves provide protection, dexterity and extreme functionality on and off the jobsite.

ORDERING INFORMATION

K-40224	Cut Resistant Glove - Large
K-40225	Cut Resistant Glove - X Large

JOURNEYMAN LEATHER UTILITY GLOVE



Durable and comfortable with pen cuff for quick on/off. Stretch back for extra comfort and flexibility, constructed of the latest high-quality high-tech materials available, these leather utility gloves provide protection, dexterity and extreme functionality on and off the jobsite.

ORDERING INFORMATION

K-40227	Leather Utility Glove - Large
K-40228	Leather Utility Glove - X Large

JOURNEYMAN WIRE PULLING GLOVE



Great gripping ability, slim fit for better dexterity, touchscreen capability on index finger, neoprene wrist closure for comfort. Reinforced palm pad.

ORDERING INFORMATION

K-40233	Wire Pulling Glove - Large
K-40234	Wire Pulling Glove - X Large

COMBINATION GLOVE & SLEEVE BAG



SPECIFICATIONS	K-512216	K-512218
Length	406.4mm	457.2mm
Width	203.2mm	203.2mm
Depth	122.3mm	122.3mm
Weight	0.5kg	0.5kg

ORDERING INFORMATION

K-512216	Glove & Sleeve Bag - 16 inch
K-512218	Glove & Sleeve Bag - 18 inch

CANVAS GLOVE BAG



SPECIFICATIONS

Length	431.8mm
Depth	101.6mm
Width	203.2mm
Weight	0.27kg

ORDERING INFORMATION

K-512417	Canvas Glove Bag - 17 inch
----------	----------------------------

Made from heavy duty canvas, these durable canvas buckets are used for carrying tools from the ground to an aerial position.

K-5104CLR HEAVY DUTY TOP CLOSING BUCKET



Top of buckets zips closed. Designed to accommodate standard 5 gallon/18.93l bucket (not included).

SPECIFICATIONS	5104CLR17	5104CLR22
Diameter	356mm	356mm
Height	432mm	559mm
Weight	3kg	3.2kg

ORDERING INFORMATION	
K-5104CLR17	17" Canvas Bucket
K-5104CLR22	22" Canvas Bucket

K-5172PS HEAVY DUTY BUCKET



SPECIFICATIONS	
Top Diameter	305mm
Bottom Diameter	229mm
Height	305mm
Weight	1.1kg

ORDERING INFORMATION	
K-5172PS	12" Heavy Duty Canvas Bucket With 15 Internal Pockets

K-5104S LEATHER BOTTOM BUCKET



SPECIFICATIONS

Diameter	305mm
Height	432mm
Weight	1.3kg
Load Rated	45kg

ORDERING INFORMATION

K-5104S	Leather Bottom Bucket
---------	-----------------------

K-5109 WIDE OPENING STRAIGHT WALL BUCKET



SPECIFICATIONS

Diameter	305mm
Height	381mm
Weight	1.0kg
Load Rated	34kg

ORDERING INFORMATION

K-5109	Wide Opening Canvas Bucket
K-5109P	Wide Opening Bucket with pocket

K-51TOP VINYL BUCKET TOP



SPECIFICATIONS

Height	88.9mm
Diameter	317.5mm
Weight	0.18kg

ORDERING INFORMATION

K-51TOP	Vinyl Bucket Top
---------	------------------

Compatible with K-5104 and K-5109 series buckets.

K-5106 STRAIGHT WALL BUCKET WITH SNAP HOOK



SPECIFICATIONS

Diameter	228.6mm
Height	355.6mm
Weight	0.8kg

ORDERING INFORMATION

K-5106	Straight Wall Canvas Bucket
K-5106S	Straight Wall Canvas Bucket with Swivel Snap

K-5103S HEAVY DUTY TAPERED WALL BUCKET



SPECIFICATION

Top Diameter	305mm
Bottom Diameter	230mm
Height	305mm
Weight	0.9kg

ORDERING INFORMATION

K-5103S	Heavy Duty Tapered Wall Bucket
---------	--------------------------------

K-511048 LINE HOSE BAG



SPECIFICATIONS

Diameter	178mm
Height	1219mm
Weight	1kg

ORDERING INFORMATION

K-511048	Line Hose Canvas Bag
----------	----------------------

K-5144 AERIAL OVAL BUCKET WITH HOOKS



SPECIFICATIONS

Dimensions	356 x 178 x 254mm
Weight	0.9kg
Interior Pockets	15

ORDERING INFORMATION

K-5144	Oval Canvas Bucket + Hooks
--------	----------------------------

K-5144S OVAL BUCKET



SPECIFICATIONS

Dimensions	356 x 178 x 254mm
Weight	1kg
Interior Pockets	15

ORDERING INFORMATION

K-5144S	Oval Canvas Bucket + swivel snap
---------	----------------------------------

K-5144BHHB HARD BODY OVAL BUCKET WITH HANDLE



SPECIFICATIONS

Dimensions	356 x 178 x 254mm
Weight	1kg
Interior Pockets	15

ORDERING INFORMATION

K-5144BHHB	Hard Body Oval Bucket with handle
------------	-----------------------------------

K-5144BHB HARD BODY OVAL BUCKET



SPECIFICATIONS

Dimensions	356 x 178 x 254mm
Weight	0.9kg
Interior Pockets	14

ORDERING INFORMATION

K-5144BHB	Hard Body Oval Bucket
-----------	-----------------------

K-5109SV VINYL BUCKET WITH SWIVEL SNAP



SPECIFICATIONS

Dimensions	304.8 x 381mm
Weight	1kg
Load Rating	45kg

ORDERING INFORMATION

K-5109SV	Vinyl Bucket with Swivel Snap
----------	-------------------------------

K-5109CSV VINYL TOP CLOSING BUCKET WITH SWIVEL



SPECIFICATIONS

Dimensions	304.8 x 431.8mm
Weight	0.8kg
Load Rating	45kg

ORDERING INFORMATION

K-5109CSV	Vinyl Top Closing Bucket with Swivel
-----------	--------------------------------------

K-5216V VINYL LINEMAN DUFFEL BAG



SPECIFICATIONS

Dimensions	609.6 x 304.8 x 304.8mm
Weight	0.9kg

ORDERING INFORMATION

K-5216V	Vinyl Lineman Duffel Bag
---------	--------------------------

This lightweight duffel bag makes it easy to transport your gear to and from the jobsite. Constructed of orange vinyl with web handles that extend around the bag for extra support. Bag also offers mesh panels and drain holes in the bottom.

K-5180 EXTRA LARGE NYLON EQUIPMENT BAG



SPECIFICATIONS

Dimensions	609.6 x 254 x 457.2mm
Weight	2.7kg

ORDERING INFORMATION

K-5180	Extra Large Nylon Equipment Bag
--------	---------------------------------

The wide opening steel frame is securely riveted in the top of the bag and the extra flap provides storm protection. The bottom of the bag is protected by metal studs and reinforced with plywood.

K-5185ORA LINEMAN BACKPACK



SPECIFICATIONS

Dimensions	457.2 x 254 x 584.2mm
Weight	2.3kg
Pockets	1 Interior, 3 Exterior

ORDERING INFORMATION

K-5185ORA	Lineman Backpack
-----------	------------------

Tool Backpack has wide opening to easily accommodate helmets, belts and other equipment. Large front pocket for separate storage of gaffs, rubber gloves or other equipment. It also has a padded back area for comfort and to protect from sharp tools and climbing gear.

K-51828 SMALL AERIAL APRON



SPECIFICATIONS

Dimensions	457.2 x 495.3 x 101.6mm
Weight	1kg
Interior Pockets	8

ORDERING INFORMATION

K-51828	Small Aerial Apron
---------	--------------------

With this aerial apron, you can stay focused on finishing the job, not finding your tools. High-viz orange for easy visibility. This versatile apron features multiple pockets, pouches, holders, loops and hooks to organize your tools.

K-51829M AERIAL APRON WITH MAGNET



SPECIFICATIONS

Dimensions	610 x 254mm
Weight	1.8kg
Interior Pockets	18

ORDERING INFORMATION

K-51829M	Aerial Apron with Magnet
----------	--------------------------

Sewn-in magnet design won't catch on gloves. Includes ten hand tool pockets, two pouches, hammer loop and two drill bit holders. High-viz orange for easy visibility and safety. Water-resistant vinyl protects against the elements.

K-51829MHS AERIAL APRON WITH MAGNET & HOT STICK POCKET



SPECIFICATIONS

Dimensions	700 x 813mm
Weight	1.8kg
Interior Pockets	16

ORDERING INFORMATION

K-51829MHS	Aerial Apron with Magnet & Hot Stick Pocket
------------	---

Keeps your utility gear organised and portable. Easily attaches to your bucket. Includes a large pouch for hot stick and attachments. Includes 10 hand tool pockets, two pouches, hammer loop and a drill bit pocket.

K-55603 TRADESMAN PRO TABLET BACKPACK



Features multiple pockets for plenty of tool storage, a separate interior padded pouch compartment for your tablet, a hard moulded front outside pocket for safety glasses and a front zip pocket to store loose parts.

SPECIFICATIONS

Dimensions	355.6 x 177.8 x 469.9mm
Weight	2.6kg
Pockets	25

ORDERING INFORMATION

K-55603	Tradesman Pro Tablet Backpack
---------	-------------------------------

K-55421BP14 TRADESMAN PRO BACKPACK



Klein Tools' Tradesman Pro Organiser Backpack features 39 pockets for plenty of tool storage, including a hard, moulded front pocket for safety glasses and a front zipper pocket to store loose parts.

SPECIFICATIONS

Dimensions	368 x 184 x 508mm
Weight	2.7kg
Pockets	39

ORDERING INFORMATION

K-55421BP14	Tradesman Pro Backpack
-------------	------------------------

K-55456BPL TRADESMAN PRO LAPTOP BACKPACK



Klein Tools' Tradesman Pro Laptop Backpack / Tool Bag can carry both your laptop and tools in the same bag. It has a separate compartment that keeps a laptop protected from other tools, plus 25 more pockets to designed to store adapters, cables, phones, and tools.

SPECIFICATIONS

Dimensions	356 x 178 x 470mm
Weight	2.7kg
Pockets	25

ORDERING INFORMATION

K-55456BPL	Tradesman Pro Laptop Backpack
------------	-------------------------------



Klein's new Tradesman Pro™ Tool Gear Backpack is made of durable 1680d ballistic weave material with a tough, diamond-textured coated bottom for added durability. Thirty-five, multi-sized pockets keep your tools organised and easy to find.

SPECIFICATIONS

Dimensions	187 x 368 x 445mm
Weight	2kg
Pockets	32 Interior, 3 exterior

ORDERING INFORMATION

K-55475	Tradesman Pro Tool Bag Backpack
---------	---------------------------------

K-55485 TRADESMAN PRO VIP BACKPACK



With 48 pockets inside and out, this backpack has plenty of room for all sorts of hand tools, tablets, cables and wires, safety equipment, attachments, accessories, and more. Removable tool caddy with carrying handles.

SPECIFICATIONS

Dimensions	279 x 343 x 500mm
Weight	6kg
Pockets	36 Interior, 12 exterior

ORDERING INFORMATION

K-55485	Tradesman Pro VIP Backpack
---------	----------------------------

K-55597 TRADESMAN PRO HI VISIBILITY BACKPACK



Klein Tools Tradesman Pro™ Hi-Viz Backpack keeps your tools organised and easily accessible. The bright interior makes it easy to find small parts and tools; the outer reflective strips create greater visibility in low light conditions.

SPECIFICATIONS

Dimensions	365 x 178 x 508mm
Weight	2.5kg
Pockets	35 Interior, 4 exterior

ORDERING INFORMATION

K-55597	Tradesman Pro Hi Visibility Backpack
---------	--------------------------------------



SPECIFICATIONS

Length	482.6mm
Width	317.5mm
Height	355.6mm
Weight	8.6kg
Interior Pockets	14 Interior, 10 Exterior

ORDERING INFORMATION

K-55452RTB	Rolling Tool Bag
------------	------------------

Cart your tools with ease in Klein Tools' Tradesman Pro Organiser Rolling Tool Bag. The rugged 6-Inch wheels can easily handle rough terrain. This tough bag can store up to 45.4 kg of tools and materials inside, and another 45.4 kg stacked on top.

LEATHER BOTTOM CANVAS TOOL BAG



SPECIFICATIONS

Length	457.2mm
Width	152.5mm
Height	355.6mm
Weight	1.8kg

ORDERING INFORMATION

K-500318	Leather Bottom Canvas Tool Bag - 18 inch, 11 pockets
K-500320	Leather Bottom Canvas Tool Bag - 20 inch, 14 pockets

Made with heavy-duty canvas material for added durability and reliability. Small tool bags, large tool bags and everything in between are designed to fit the diverse tools and accessories professionals use every day and help make lugging tools and materials between jobsites easier.

K-5179 WATER REPELLENT CANVAS POUCH



SPECIFICATIONS	
Length	191mm
Width	178mm
Height	89mm
Weight	1.8kg

ORDERING INFORMATION	
K-5179	Water Repellent Canvas Pouch

K-5140 CANVAS BAGS 4 PK



SPECIFICATIONS	
Dimensions	317.5 x 18 x 177.8mm
Weight	426g

ORDERING INFORMATION	
K-5140	Canvas Bags 4 pk - assorted colours

Klein Tools popular canvas zipper bags now come in a convenient 4-pack, each bag a different colour, making it easy to store and identify your tools or spare parts. A heavy-duty brass zipper keeps these bags securely closed.

K-5539CPAK CANVAS ZIPPER BAGS 3 PK



SPECIFICATIONS	
Dimensions	254 x 89 x 203.2mm
Weight	350g

ORDERING INFORMATION	
K-5539CPAK	Canvas Bags 3 pk - assorted colours

The Klein Tools Canvas Zipper Consumables bags are perfect for storing wire nuts, connectors, and other consumables. Each bag has a brass grommet making them easy to hang or attach to a belt or clip.



Klein storage boxes are offered with a choice of compartment sizes and arrangements. Boxes feature strong, rigid, heavy-duty welded construction. Full-length piano hinged covers are designed to stay open for ease of access.

ORDERING INFORMATION	K-54439	K-54447	K-54448
Length	247.7mm	304.8mm	304.8mm
Width	338.2mm	457.2mm	457.2mm
Height	50.8mm	76.2mm	76.2mm
Weight	2.0kg	3.6kg	3.6kg
No of Compartments	20 each 66.7 x 58.7mm	20 each 69.9 x 73mm 4 each 95.3 x 73mm	32 each 54.0 x 73.0mm

K-54477 4 BOX SLIDE RACK



SPECIFICATIONS	
Length	400.1mm
Width	508mm
Height	381mm
Weight	16.8kg

Keep small tools and parts securely stored away, but still easily accessible with Klein Tools' Slide Racks. This durable metal frame holds up to four extra-large Klein Tools storage boxes (sold separately). The boxes ride in and out on heavy-duty channel tracks that permit covers to open all the way for full access.

ORDERING INFORMATION

K-54477

4 Box Slide Rack

K-55600 HARD COOLER



SPECIFICATIONS

Length	400mm
Width	508
Height	381mm
Weight	16.8kg

ORDERING INFORMATION

K-55600	Hard Cooler
---------	-------------

Lunch box keeps cool up to 30 hours; main compartment has a 16.1 L, 18 can capacity. Cooler supports up to 300 pounds (136.1 kg); not only does this carry lunch, it doubles as a handy place to sit. Inside storage compartment, lid opens full 180-degrees to access and holds items like phone, medicine, keys, napkins, utensils, etc.

K-55601 SOFT COOLER



SPECIFICATIONS

Length	241mm
Width	305mm
Height	330mm
Weight	1.5kg

ORDERING INFORMATION

K-55601	Soft Cooler
---------	-------------

The tough Tradesman Pro™ Soft Lunch Cooler with its two insulated compartments keeps food and drinks cool for up to 12 hours. Fully-moulded bottom protects against the elements. Front zipper pocket holds keys, napkins, medicine, etc. Shoulder strap and handle for easy carrying.

K-50034 RATCHETING PVC CUTTERS



ORDERING INFORMATION

K-50034 Ratcheting PVC Cutter

SPECIFICATIONS

Length	279mm
Weight	0.6kg
OD PVC Capacity	16-63.5mm
ID PVC Capacity	13-50.8mm

K-50506SEN PVC CUTTERS



ORDERING INFORMATION

K-50506SEN PVC Cutter

SPECIFICATIONS

Length	216mm
Weight	0.5kg
PVC Capacity	19mm
Non-Metal Capacity	25.4mm
Flexible Pipe Capacity	34.9mm

K-88912 PVC AND MULTILAYER TUBE CUTTERS



ORDERING INFORMATION

K-88912 PVC and Multilayer Tube Cutter

SPECIFICATIONS

Dimensions	186 x 25 x 66mm
Weight	215g
PVC Capacity	19mm
Multilayer Capacity	25mm

K-88904 PRO TUBE CUTTER



Accurate 4 roller tracking prevents spiraling. For Stainless Steel and Copper tubing.

ORDERING INFORMATION

K-88904

Pro Tube Cutter

SPECIFICATIONS

Length	153mm
Weight	0.6kg
Cutting Capacity	3.2-34.9mm Steel and Copper tubing

K-88910 MINI TUBE CUTTER



For cutting 3.2mm to 15.9mm Copper and Aluminium tubing. Requires only 35mm swing radius

SPECIFICATIONS

Dimensions	37 x 21 x 38mm
Weight	0.1kg

ORDERING INFORMATION

K-88910

Mini Tube Cutter

K-88977 PRO MINI TUBE CUTTER



For Copper and Aluminium. Perfect for tightspace cutting - requires only 35mm swing radius.

ORDERING INFORMATION

K-88977

Pro Mini Tube Cutter

SPECIFICATIONS

Length	44mm
Weight	0.07kg
Cutting Capacity	3.2-15.9mm OD



Use this Non-Contact Voltage Tester to detect standard voltage in cables, cords, circuit breakers, lighting fixtures, switches, outlets and wires. A bright green LED will tell you the tester is working and also functions as a work light. It changes to red and warning tones sound when voltage is detected. CAT IV 1000 Standard, 50-500Hz frequency.

SPECIFICATIONS

Length	139.7mm
Width	18.3mm
Height	25.4mm
Weight	22.7g
Voltage	50-1000V AC
Batteries	2x AAA

ORDERING INFORMATION

K-NCVT-1 Non-contact Voltage Tester

K-NCVT-2 DUAL RANGE NON-CONTACT VOLTAGE TESTER



This Dual-Range Non-Contact Voltage Tester automatically detects low voltage and standard voltage. A bright green LED will tell you the tester is working and also functions as a work light. The light flashes red and two distinct warning tones sound when either low or standard voltage is detected. CAT IV 1000V Standard, 50-500Hz frequency.

SPECIFICATIONS

Length	139.7mm
Width	18.3mm
Height	25.4mm
Weight	22.7g
Voltage	12-1000V AC
Batteries	2 x Alkaline 1.5V AAA

ORDERING INFORMATION

K-NCVT-2 Dual Range Non-contact Voltage Tester



The NCVT-3 is a non-contact voltage tester with an integrated flashlight. The voltage sensor detects 12-1,000V AC and indicates the presence of voltage in cables, cords, circuit breakers, light fixtures, switches, outlets and wires as well as AC voltage in doorbells, thermostats, low voltage lighting and irrigation systems. Includes both visual and audible signals. The NCVT-3 is rugged enough for any job site. CAT IV 1000V Standard, 50-500Hz frequency, IP67 water and dustproof.

ORDERING INFORMATION	
K-NCVT-3	Non-contact Voltage Tester Flashlight

SPECIFICATIONS	
Length	148mm
Width	18.3mm
Height	29.4mm
Weight	34g
Voltage	12-1000V AC
Batteries	2x AAA

K-NCVT-4IR N/C VOLTAGE TESTER W/INFRARED THERMOMETER



The NCVT-4IR provides non-contact determination of AC voltage in cables, cords, circuit breakers, switches, outlets and wires; as well as infrared (IR) thermometer measurements, making it the perfect choice for HVAC professionals. CAT IV 1000V Standard, 50-500Hz frequency.

ORDERING INFORMATION	
K-NCVT-4IR	Non-contact Voltage Tester with Infrared Thermometer

SPECIFICATIONS	
Length	158.8mm
Width	30.2mm
Height	31.8mm
Weight	57g
Voltage	12-1000V AC
Batteries	2x AAA



The Klein Tools NCVT-6 is a non-contact voltage tester with an integrated laser distance meter. It can detect voltage over the full-range from 12 to 1000 VAC and can measure distances from 2-Inch (51 mm) up to 66-Foot (20 m). The laser distance meter functions independently with a simple-to-use intuitive interface. Easy, single-button changes between voltage detection and laser distance measurements.

ORDERING INFORMATION	
K-NCVT-6	Non-contact Voltage Tester w Laser Distance Measurer

SPECIFICATIONS	
Length	164mm
Width	34mm
Height	31mm
Weight	72g
Voltage	12-1000V AC
Batteries	2x AAA

K-ET920 USB DIGITAL METER



The Klein Tools ET920 is a USB digital meter for Type-A and Type-C ports. It accurately and reliably measures and displays the USB port voltage, current, capacity, energy, and resistance simultaneously. It can function with any USB-A and most USB-C ports, including Qualcomm Quick Charge® ports that have the ability to deliver power. It requires NO batteries as it draws power from the power source to function.

ORDERING INFORMATION	
K-ET920	USB Digital Meter

SPECIFICATIONS	
Dimensions	164 x 34 x 31mm
Weight	48g
Voltage	3-20V DC
Capacity Used	99,999mAh maximum
Energy Delivered	999Wh maximum
Resistance	400 ohms maximum



The CL360 Electrical Tester is an automatically ranging true root means squared digital open fork meter that measures AC current via the fork, AC/DC voltage, continuity, and resistance via test leads. It can detect the presence of voltage via the integrated non-contact voltage tester.

ORDERING INFORMATION	
K-CL360	Clamp Meter

SPECIFICATIONS	
Length	213mm
Width	54mm
Height	35mm
Weight	180g
Voltage	600V AC, 1000V DC
Batteries	2x AAA

K-SRS56036 TELESCOPIC POLE 5.4M



When speed counts, look no further. This tool extends to 18 feet in just 10 seconds! Easily retrieve cable for a distance without needing an extra pair of hands to shorten installation time. Great for low voltage applications.

ORDERING INFORMATION	
K-SRS56036	Telescopic Pole 5.4m

SPECIFICATIONS	
Overall Length	5.5m / 18ft
Collapsed Length	0.8m / 32"
Weight	180g



Meter provides measurements up to 20m/65ft in distance, at an accuracy of + or - 1.6mm. Quickly calculates area, length and volume with large, easy-to-read buttons. Memory stores last 20 measurements.

SPECIFICATIONS

Dimensions	114 x 51 x 35mm
Weight	145g
Range	50.8mm - 19.8m
Type	Laser Reflection
Accuracy	+/- 1.6mm
Standard	IP54
Display	LCD
Batteries	2x AAA

ORDERING INFORMATION

K-93LDM65	20m Laser Measurer
-----------	--------------------

K-TT1 TOOL TETHER



Keep your tools close at hand when working at height.

SPECIFICATIONS

Max Weight	4.5kg
Slack Length	812.8mm
Stretched Length	1524mm

ORDERING INFORMATION

K-TT1	Tool Tether
-------	-------------

K-TT2 TRIPLE LOCKING TOOL TETHER



ORDERING INFORMATION

K-TT2	Triple Locking Tool Tether
-------	----------------------------

SPECIFICATIONS

Max Weight	7kg
Slack Length	813mm
Stretched Length	1295mm

K-56220 TRADESMAN PRO HEADLAMP



Spotlight



Floodlight

This LED Headlamp has an anti-slip silicone strap to keep it securely fit to a hard hat. A 45-degree tilt allows the user to vary the beam direction to focus light exactly where it is needed. The strap is pre-adjusted to fit quickly onto a hard hat. The hard hat headlamp has two modes: spotlight or floodlight, depending on the necessary required focus.

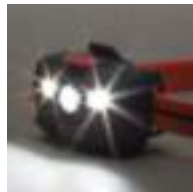
SPECIFICATION

Bulb Type	LED
Lumens	Spotlight: 200 Floodlight: 100
Battery Life (3 x AAA included)	Spotlight: 6hrs Floodlight: 10hrs

ORDERING INFORMATION

K-56220	Tradesman Pro Headlamp
---------	------------------------

K-56064 RECHARGEABLE HEADLAMP w SILICONE STRAP



SPECIFICATIONS

Bulb Type	LED
Lumens	Boost: 400 Spotlight: 200 Floodlight:
Battery Life (Lithium-Ion, 3.7 V)	

ORDERING INFORMATION

K-56064	Rechargeable Headlamp w Silicone Strap
---------	---

Klein Tools' rechargeable headlamp provides three modes to fit your task: a bright, 22-hour floodlight; a brighter 12-hour focused spotlight, and a super-bright 400 lumen boost mode. You'll know when it's time to recharge the lamp, because the battery gauge clearly indicates how much battery you have left. Whether you wear with the adjustable silicone strap or attach it directly to a Klein® Hard Hat.



The rechargeable focus flashlight with class IIIa red laser pinpoints out-of-reach objects. This compact yet rugged, 10-foot drop-rated flashlight is IP54 water and dust-resistant, making it a durable, reliable, versatile flashlight for active professional daily use.

SPECIFICATIONS	
Bulb Type	LED
Lumens	High: 350 Low: 125
Battery Life	6-12 Hours (2600mAh)

ORDERING INFORMATION	
K-56040	Rechargeable Focus Flashlight with laser

K-56028 FLASHLIGHT WITH WORKLIGHT



This light is both a bright, focused flashlight and a broadcasting flood light in one small package. Magnetic end for hands-free operation. Glow ring tip charges while light is on. Waterproof IP67, dustproof.

SPECIFICATION	
Bulb Type	LED
Lumens	Torch: 235 Work Light: 100
Battery Life (3 x AAA included)	Flashlight: 6hrs Work Light: 12hrs

ORDERING INFORMATION	
K-56028	Flashlight with Worklight

K-56026 PENLIGHT WITH LASER



The new Klein Tools inspection penlight uniquely features a laser that can be used to pinpoint hard-to-reach places.

SPECIFICATION	
Bulb Type	LED
Lumens	45
Battery Life (2 x AAA included)	10hrs

ORDERING INFORMATION	
K-56026	Penlight with Laser

K-55437 TRADESMAN PRO WORKLIGHT



SPECIFICATION

Bulb Type	LED
Lumens	High: 150 Low: 50
Battery Life (3 x AAA included)	High: 6hrs Low: 10hrs

ORDERING INFORMATION

K-55437	Tradesman Pro Worklight
---------	-------------------------

K-56221 CLIP LIGHT



The Clip Light offers two power settings, and is impact and water resistant. The durable, rugged rubber over mould fits comfortably in hand.

SPECIFICATION

Bulb Type	LED
Lumens	High: 150 Low: 50
Battery Life (3 x AAA included)	High: 6hrs Low: 10hrs

ORDERING INFORMATION

K-56221	Clip Light
---------	------------

K-9375 7.5M DOUBLE HOOK MAGNETIC TAPE MEASURE



SPECIFICATIONS

Length	87mm
Width	60mm
Height	87mm
Weight	0.6kg

ORDERING INFORMATION

K-9375	7.5m Tape Measure
K-5195TT	Tape Measure Holder

K-9319RETT MAGNETIC TORPEDO LEVEL



ORDERING INFORMATION

K-9319RETT Magnetic Torpedo Level

SPECIFICATIONS

Length	228.6mm
Weight	0.05kg
Material	Aluminium

K-56001 50FT FLEX STEEL FISH TAPE



SPECIFICATIONS

Diameter	178mm
Tape Size	152 x 3.2 x 1.14mm
Weight	0.6kg

ORDERING INFORMATION

K-56001 50ft Flex Steel Fish Tape

The 50-foot (15.24 m) Steel Fish Tape is perfect for short wire runs associated with light commercial, residential and voice-data-video-audio installations. The tape features laser-etched descending markings placed every foot, allowing you to accurately measure the depth of conduit runs and determine the amount of tape left to pay out.

K-31900 BI-METAL SAW



Bi-Metal Hole Saws are optimised for cutting steel, will also work well in drywall, ceiling tile, wood and plastic.

SPECIFICATIONS

Hole Diameter	162mm
Pipe Entrance Size	152mm
Weight	0.9kg

ORDERING INFORMATION

K-31900 Bi-Metal Saw



ORDERING INFORMATION	
K-31874	Replacement Hole Cutter Pilot Bit

SPECIFICATIONS	K-31850	K-31852	K-31856
Hole Diameter	19mm	22mm	29mm
Conduit/ Pipe size	-	13mm	19mm
Weight	113g	136g	181.4g

K-NRHD4 4-IN-1 SQUARE IMPACT SOCKET



ORDERING INFORMATION	
K-NRHD4	4-in-1 Square Impact Socket

SPECIFICATIONS	
Length	228.6mm
Width	50.8mm
Height	50.8mm
Weight	1.03kg
No of points	4

The 4-in-1 Impact Socket Wrench features two spring-loaded sockets in one tool for hands-free pole hardware installation and removal. The tool includes 3/4-Inch, 13/16-Inch, 1-Inch and 1-1/8-Inch square socket sizes plus a 7/16-Inch hex quick-change adapter.

K-66004 2-IN-1 SQUARE IMPACT SOCKET



ORDERING INFORMATION	
K-66004	2-in-1 Square Impact Socket

SPECIFICATIONS	
Length	27.9mm
Width	27.9mm
Height	79.2mm
Weight	0.2kg
No of points	6

Single-ended impact socket wrench with hands-free adjustment between 3/4-Inch and 9/16-Inch hex sizes. Deep socket with a 1/2-Inch drive works great for pole hardware installation and removal. The high-torque, 6-point design contacts flat sides of hex fasteners to reduce round-off.

Featuring 8 sizes in 4 easy-to-carry sockets, these 5-Piece, 2-in-1 Impact Socket Set consists of the most common socket sizes used in electrical and construction work. Each impact socket features two coaxial spring-loaded sockets in one. The high-torque, 12-Point design is easier to position on fasteners including square ones. Includes a 1/4-Inch hex by 1/2-Inch adapter and convenient carrying case.

K-66050E 2-IN-1 METRIC IMPACT SOCKET SET 5 PIECE



SPECIFICATIONS	
Length	245mm
Width	145mm
Height	72mm
Weight	1.9kg
No of points	12

ORDERING INFORMATION	
K-66050E	2-in-1 Metric Impact Socket Set, 5 Piece

K-66040 2-IN-1 IMPERIAL IMPACT SOCKET SET 5 PIECE



SPECIFICATIONS	
Length	140mm
Width	120mm
Height	48mm
Weight	1kg
No of points	12

ORDERING INFORMATION	
K-66040	2-in-1 Imperial Impact Socket Set, 5 Piece

INSULATED HIGH LEVERAGE SIDE CUTTING PLIERS



These Klein Tools Side Cutting New England Insulated Pliers are insulated by two layers. They are made of forged steel with induction-hardened knives for strength and durability. And they have high-leverage design which provides 46-percent more cutting and gripping power than other plier designs.

ORDERING INFO	K-D213-9NE-INS	K-D2000-9NE-INS
Length	244.5mm	244.5mm
Jaw Dimensions	40.5 x 33.3mm	40.5 x 33.3mm
Weight	0.59kg	0.6kg
Nose Type	New England	New England
Heavy Duty	No	Yes

INSULATED HIGH LEVERAGE DIAGONAL CUTTERS



These Insulated Diagonal-Cutting pliers have dual layered grips that are flame retardant, impact resistant, and rated for 1000-volts. They feature induction hardened cutting knives for durability. They are made of forged steel and have a hot-riveted joint for smooth action and no handle wobble.

ORDERING INFO	K-D228-8-INS	K-D248-8-INS	K-D2000-28-INS	K-D2000-48-INS
Length	209.6mm	209.6mm	209.6mm	209.6mm
Jaw Dimensions	20.6 x 30.2mm	20.6 x 30.2mm	20.6 x 30.2mm	20.6 x 30.2mm
Weight	0.32kg	0.32kg	0.32kg	0.32kg
Nose Type	Tapered	Angled	Tapered	Angled
Heavy Duty	No	No	Yes	Yes

K-12098-INS INSULATED UNIVERSAL SIDE CUTTERS



ORDERING INFORMATION

K-12098-INS

Insulated Side Cutters

SPECIFICATIONS

Length	225.4mm
Jaw Length	45.2mm
Jaw Width	26.2mm
Weight	0.45kg
Nose Type	Universal

K-D2139NE-CR-INS INSULATED CRIMPING SIDE CUTTERS



ORDERING INFORMATION

K-D2139NE-CR-INS

Insulated Crimping Cutters

SPECIFICATIONS

Length	244.5mm
Jaw Length	40.5mm
Jaw Width	33.3mm
Weight	0.59kg
Nose Type	New England

K-D220-7-INS INSULATED DIAGONAL CUTTERS



ORDERING INFORMATION

K-D220-7-INS

Insulated Diagonal Cutters

SPECIFICATIONS

Length	200mm
Jaw Length	25.4mm
Jaw Width	24.6mm
Weight	0.32kg
Nose Type	Tapered

K-D203 INSULATED LONG NOSE PLIERS



ORDERING INFO	K-D203-8-INS	K-D208-8N-INS	K-D203-7-INS	K-D203-6-INS
Length	225.4mm	225.4mm	187.3mm	174.6mm
Jaw Dimensions	58.7 X 25.4mm	58.7 X 25.4mm	61.9 X 17.5mm	49.2 X 17.5mm
Weight	0.32kg	0.32kg	0.14kg	0.14kg
Extras	Extended Handles	Skinning Hole No.12	Curved Handles	Curved Handles

K-D502-10-INS INSULATED PUMP PLIERS



Wide range of versatile jaw positions, secure tongue and groove design for non-slip grip, even with heavy pressure.

ORDERING INFORMATION	
K-D502-10-INS	Insulated Pump Pliers

SPECIFICATIONS	
Length	260.4mm
Weight	0.59kg
Max Capacity	44.5mm

K-1005-INS INSULATED CRIMPING/CUTTING TOOL



Tapered nose designed for working in confined spaces, wire cutter in nose.

ORDERING INFORMATION	
K-1005-INS	Crimping/Cutting Tool

SPECIFICATIONS	
Length	247.7mm
Weight	0.45kg
Crimps	10-22 AWG



Cable gripping, shear type jaws, one hand shearing action ideal for working in confined spaces.

ORDERING INFORMATION

K-63050-INS High Leverage Cable Cutters

SPECIFICATION

Length	244.5mm
Weight	0.45kg
Max Capacity	4/0 Aluminium 2/0 Soft Copper 100 Pair 24 AWG

K-1571-INS INSULATED **LINEMAN'S SKINNING KNIFE**



Insulated knife for skinning wires. Features measuring mark system on back of handle for accurate skinning.

ORDERING INFORMATION

K-1571-INS Linesman's Skinning Knife

SPECIFICATIONS

Overall Length	222.3mm
Blade Length	60.3mm
Weight	0.16kg

INSULATED WIRE **STRIPPER/CUTTERS**



This compact, lightweight wire-stripping, cutting tool cuts, strips, loops and gauges AWG wire. Dual layer orange-over-white insulation protects against electric shock. Spring-loaded for self-opening. Narrow nose fits into tight spaces.

ORDERING	K-11045-INS	K-11049-INS	K-11055-INS
Length	177.8mm	177.8mm	203.2mm
Strips & Cuts	10/12/14/16/18 Solid AWG	8/10/12/14/16 Stranded AWG	10/12/14/16/18 Solid AWG 12/14/16/18/20 Stranded AWG
Weight	4.35kg	4.35kg	5.44kg



Durable, two-layer, moulded insulation to meet or exceed all ASTM and IEC standards for insulated tools, 1000V Rated for safety. Cushion-Grip handle for greater torque and comfort.

ORDERING INFORMATION	Tip	Length	Shank Length	Weight
K-6334-INS	Phillips #1	196.9mm	101.6mm	60g
K-603-4-INS	Phillips #2	211.2mm	101.6mm	91g
K-6037-INS	Phillips #2	287.3mm	177.8mm	113g
K-6337-INS	Phillips #3	314.3mm	177.8mm	181g
K-607-3-INS	Cabinet 2.4mm	171.5mm	76.2mm	54g
K-612-4-INS	Cabinet 3.2mm	196.9mm	101.6mm	60g
K-601-4-INS	Cabinet 4.8mm	196.9mm	101.6mm	60g
K-601-7-INS	Cabinet 4.8mm	273.1mm	177.8mm	77g
K-602-4-INS	Cabinet 6.4mm	211.1mm	101.6mm	91g
K-605-7-INS	Cabinet 6.4mm	287.3mm	177.8mm	113g
K-602-7-INS	Cabinet 7.9mm	314.3mm	177.8mm	181g
K-602-8-INS	Cabinet 9.5mm	339.7mm	203.2mm	227g
K-661-4-INS	Square #1	211.1mm	101.6mm	91g
K-661-7-INS	Square #1	287.3mm	177.8mm	91g
K-662-4-INS	Square #2	211.1mm	101.6mm	91g
K-662-7-INS	Square #2	287.2mm	177.8mm	91g



PHILLIPS TIP



CABINET TIP



SQUARE TIP

K-33532-INS 2 PIECE INSULATED SCREWDRIVER SET



Includes one 1/4" Cabinet-Tip (602-4-INS) and one #2 Phillips-Tip (603-4-INS). Reduces risk with work up to 1000 volts. Durable, two-layer, moulded insulation. Cushion-Grip handles for greater torque and comfort.

SPECIFICATIONS

Overall Length	184.2mm
Shank Length	101.6mm
Weight	0.27kg

ORDERING INFORMATION

K-33532-INS	2 Piece Insulated Screwdriver Set
-------------	-----------------------------------

K-33528 9 PIECE INSULATED SCREWDRIVER SET



SPECIFICATIONS

Length	279mm
Width	394mm
Dimensions	64mm
Weight	2.5kg

CONTENTS - K-33528

3/16" Cabinet 4" Screwdriver	1/8" Slotted 4" Screwdriver
3/16" Cabinet 7" Screwdriver	#1 Phillips 4" Screwdriver
5/16" Cabinet 7" Screwdriver	#2 Phillips 4" Screwdriver
3/8" Cabinet 8" Screwdriver	#3 Phillips 7" Screwdriver
1/4" Cabinet 4" Screwdriver	



SPECIFICATION	
Length	279mm
Width	394mm
Height	64mm
Weight	3.13kg

CONTENTS - K-33529

$\frac{3}{16}$ " Cabinet 4" Screwdriver	8" Heavy Duty Long Nose Pliers
$\frac{1}{4}$ " Cabinet 4" Screwdriver	9" Heavy Duty Side Cutting Pliers
#2 Phillips 4" Screwdriver	8" Heavy Duty Diagonal Cutters
High Leverage Cable Cutters	Wire Stripper & Cutter

K-33526 8 PIECE BASIC INSULATED TOOL KIT



SPECIFICATION	
Length	279mm
Width	394mm
Height	64mm
Weight	3.13kg

CONTENTS - K-33526

$\frac{3}{16}$ " Cabinet 4" Screwdriver	8" Long Nose Pliers
$\frac{1}{4}$ " Cabinet 4" Screwdriver	9" Side Cutting Pliers
#2 Phillips 4" Screwdriver	8" Diagonal Cutters
High Leverage Cable Cutters	Wire Stripper & Cutter



SPECIFICATIONS

Open Dimensions	622 x 622mm
Closed Dimensions	622x140mm
Weight	4.45kg

CONTENTS - K33525SC

1/4" Cabinet 4" Screwdriver	#1 Phillips 4" Screwdriver
5/16" Cabinet 7" Screwdriver	#2 Phillips 4" Screwdriver
3/8" Cabinet 8" Screwdriver	#3 Phillips 7" Screwdriver
Linesman's Skinning Knife	9" Heavy Duty Side Cutting Pliers
High Leverage Cable Cutters	8" Long Nose Cutting Pliers
8" Diagonal Cutting Pliers	10" Pump Pliers
8" Heavy Duty Diagonal Cutting Pliers	

K-33525 13 PIECE UTILITY INSULATED TOOL KIT



SPECIFICATION

Length	391mm
Width	480mm
Height	210mm
Weight	9.1kg

v

6.4mm Cabinet 4" Screwdriver	Linesman's Skinning Knife
7.9mm Cabinet 7" Screwdriver	High Leverage Cable Cutters
9.5mm Cabinet 8" Screwdriver	8" Diagonal Cutting Pliers
#1 Phillips 4" Screwdriver	8" Heavy Duty Diagonal Cutting Pliers
#2 Phillips 4" Screwdriver	9" Heavy Duty Side Cutting Pliers
#3 Phillips 7" Screwdriver	8" Long Nose Cutting Pliers
	10" Pump Pliers



A comprehensive set of 22 insulated tools including assorted pliers x 8, screwdrivers x 9, 1 each pump pliers, wire stripper/cutter, cable cutter, lineman's skinning knife and a crimping/cutting tool.

The custom case includes 3 sets of custom-fitted pockets for each tool. Piano-hinged cover features a combination lock and key-locked latches for security.

SPECIFICATION	
Length	391mm
Width	480mm
Height	210mm
Weight	11kg

CONTENTS - K-33527

4.8mm Cabinet 4" Screwdriver	Crimping/Cutting Tool
4.8mm Cabinet 7" Screwdriver	Wire Stripper & Cutter
6.4mm Cabinet 4" Screwdriver	Crimping Side Cutting Pliers
7.9mm Cabinet 7" Screwdriver	Linesman's Skinning Knife
9.5mm Cabinet 8" Screwdriver	High Leverage Cable Cutters
3.2mm Slotted 4" Screwdriver	7" Diagonal Cutting Pliers
#1 Phillips 4" Screwdriver	8" Diagonal Cutting Pliers
#2 Phillips 4" Screwdriver	8" Heavy Duty Diagonal Cutting Pliers
#3 Phillips 7" Screwdriver	9" Heavy Duty Side Cutting Pliers
	6" Long Nose Cutting Pliers
	8" Long Nose Side Cutting Pliers
	8" Heavy Duty Long Nose Pliers
	10" Pump Pliers

K-68502 11 PIECE COMBINATION WRENCH SET



Contains: 7mm, 8mm, 9mm, 10mm, 11mm, 12mm, 13mm, 14mm, 15mm, 17mm, and 19mm Combination Wrenches.

ORDERING INFORMATION

K-68502

11 Piece Combination Wrench Set

SPECIFICATION

Weight

1.1kg

K-85078 8 PIECE CUSHION GRIP SCREWDRIVER SET



General purpose selection of the most frequently used screwdrivers with an ergonomic cushion-grip and precision machined tip for efficient work.

SPECIFICATION

Weight

0.8kg

ORDERING INFORMATION

K-85078

8 Piece Screwdriver Set

CONTENTS

6.4mm Keystone, 211.9mm Screwdriver - Heavy Duty

7.9mm Keystone, 277.8mm Screwdriver - Heavy Duty

4.8mm Cabinet, 171.5mm Screwdriver

7.9mm Cabinet, 87.3mm Screwdriver

#1 Phillips 171.5mm Screwdriver

#2 Phillips 87.3mm Screwdriver

#2 Phillips 209.6mm Screwdriver

#3 Phillips 279.4mm Screwdriver

K-647 7 PIECE NUT DRIVER SET 6" SHAFT



Klein Tools 7-Piece Cushion-Grip Nut Driver Set contains the type of nut drivers professionals carry most often. Each nut driver features a full hollow shaft for work on stacked circuit boards or other long bolt applications. Klein's patented Cushion-Grip handle provides greater torque and comfort.

Contains: 3/16", 1/4", 5/16", 11/32", 3/8", 7/16", 1/2".

SPECIFICATIONS

Weight	0.8kg
--------	-------

ORDERING INFORMATION

K-647	7 Piece Nut Driver Set, 6" shaft
-------	----------------------------------

K-65160 7 PIECE METRIC NUT DRIVER SET 3" SHAFT



The Klein Tools 7-Piece Metric Nut Driver Set features exceptionally strong drivers made from heat-treated, tempered steel and sport cushion-grip handles to resist slippage and increase potential torque. Each shaft is fully chrome plated to resist corrosion, providing you with lasting durability and performance.

Contains: 5mm, 5.5mm, 6mm, 7mm, 8mm, 9mm & 10mm.

SPECIFICATIONS

Weight	0.7kg
--------	-------

ORDERING INFORMATION

K-65160	7 Piece Metric Nut Driver Set, 3" shaft
---------	---



Get all five of Klein Tools' Fully Reversible Ratcheting Offset Box Wrenches in one convenient set. Each wrench has a different size opening at each end for multiple applications. Plus, both ends are offset by 25-degrees for more convenient use in confined spaces.

Contains: 5/16" - 1/4", 7/16" - 3/8", 9/16" - 1/2", 11/16" - 5/8", 7/8" - 3/4" (7.9 - 19mm) and carry case.

SPECIFICATIONS

Weight	0.3kg
--------	-------

ORDERING INFORMATION

K-68245	5 Piece Reversible Ratcheting Box Wrench Set
---------	--

K-65502 8 PIECE DEEP SOCKET WRENCH SET



Set includes eight hex type drive, 6-point deep sockets: 3/8-Inch , 7/16-Inch , 1/2-Inch , 9/16-Inch , 5/8-Inch , 11/16-Inch , 3/4-Inch , and 13/16-Inch . Hinged red metal box. Chrome finish.

SPECIFICATIONS

Weight	0.3kg
--------	-------

ORDERING INFORMATION

K-65502	8 Piece Deep Socket Wrench Set
---------	--------------------------------



The Klein Tools 41-Piece Journeyman Tool Set has practically any tool an electrician would need. This wide assortment of quality, durable tools contains pliers, screwdrivers, wrenches, wire strippers, and much more. The set includes a large canvas bag to store all of these tools.

SPECIFICATIONS

Weight	13.5kg
--------	--------

CONTENTS - K-80141

Long nose side cutting pliers 6-3/4"	12 piece L style ball end hex key caddy set
Journeyman™ long nose side cutting pliers 8"	Double hook magnetic tape measure, 25ft
Journeyman™ pump pliers 10"	Aluminium magnetic torpedo level
Journeyman™ heavy duty side cutting wire pulling pliers 9"	Leather bottom canvas tool bag 18"
Diagonal angled head heavy duty cutting pliers 8"	Canvas zipper bag
5/16" Cabinet tip screwdriver 1-1/2"	Copper wire stripper and cutter
3/16" Cabinet tip screwdriver 3"	Klein-Kurve® retractable utility knife
3/16" Cabinet tip screwdriver 6"	Cable splicers kit
1/4" Cabinet tip screwdriver, heavy duty 6"	1/8" wide steel fish tape 125ft
3/16" Rapi-Driv® cabinet screwdriver 6"	Padded adjustable shoulder strap
5/16" Keystone tip screwdriver 6"	Black frame, clear lens protective eyewear
#2 Phillips stubby screwdriver 1-1/2"	Journeyman™ high leverage cable cutter
#1 Phillips screwdriver 3"	Conduit fitting and reaming screwdriver
#2 Phillips wire bending screwdriver	Cushion grip scratch awl
3/16" Nut driver 3"	Adjustable wrench, extra capacity 8"
1/4" Nut driver cushion grip 3"	Adjustable wrench, extra capacity 12"
5/16" Nut driver cushion grip 3"	#2 Square screwdriver 4"
11/32" Nut driver 3"	1/4" Heavy duty screwdriver square shank
3/8" Nut driver 3"	Journeyman™ crimping/cutting tool
7/16" Nut driver cushion grip 3"	Klein-Kurve® dual nm cable stripper/cutter
1/2" Nut driver cushion grip 3"	



SPECIFICATIONS

Length	7.62m
Rope Diameter	10mm
Weight	1.3kg
Maximum Safe Load	340kg

ORDERING INFORMATION

K-180230SSR	Block and Tackle Kit
-------------	----------------------

All Klein block and tackle use high-quality, 3/8-Inch (10 mm) diameter rope. Light, galvanized-steel shell blocks are fitted with snubbing hooks to hold the load. Sheaves are strong yet lightweight aluminum alloy with all-bronze bushings. This package features two blocks with a swivel Klein hook Cat. No. 259 with a maximum safe load of 750-pound (340 kg). These are NOT occupational protective hooks. NOT for human support

K-1803-60 POLYPROPYLENE HAND LINE WITH SNAP HOOK



SPECIFICATIONS

Length	22.9m
Rope Diameter	8mm
Weight	1.1kg
Maximum Safe Load	113kg

Klein Tools Polypropylene Hand-Line with Snap Hook is made with 5/16-Inch (8 mm) three-strand polypropylene 75-Foot (22.9 m) rope spliced to the eye of a snap hook. The hook is a forged steel snap hook with eye at 90- Degree to opening. This hand-line comes with a maximum safe load of 250-pounds (113 kg). These are NOT occupational protective devices. Do NOT use for human support.

ORDERING INFORMATION

K-1803-60	Polypropylene Hand Line w Snap Hook
-----------	-------------------------------------

K-BAT20-716 7/16" HIGH TORQUE **IMPACT WRENCH**



For professional impact fastening and drilling applications. With up to 500 foot pounds of max torque, the impact wrench is great for drilling using auger bits and driving fasteners into wood, metal and concrete. It features a variable speed trigger and 7/16" quick release chuck.

SPECIFICATIONS

Length	279mm
Width	102mm
Height	254mm
Weight	2.9kg
Batteries	DeWALT 20V Lithium-ion

ORDERING INFORMATION

K-BAT20-716	High Torque Impact Wrench
-------------	---------------------------

K-BAT20-G7 CABLE CUTTER **AL/CU OPEN JAW**



Powered by a DeWALT 20V lithium-ion battery, this tool features two working lights to illuminate darker spaces. The open-jaw style is great when working in tight spaces. Cuts copper and aluminum cable quickly and efficiently.

SPECIFICATIONS

Length	549mm
Width	248mm
Height	174mm
Weight	6.9kg
Maximum cable capacity - copper	600mcm
Maximum cable capacity - aluminium	1000mcm
Batteries	DeWALT 20V Lithium-ion

ORDERING INFORMATION

K-BAT20-G7	Cable Cutter Open Jaw AL/CU
------------	-----------------------------



ORDERING INFORMATION

K-BAT20-G2

Cable Cutter Open Jaw ACSR

SPECIFICATIONS

Length	549mm
Width	248mm
Height	174mm
Weight	6.9kg
Maximum cable capacity - copper	400mcm
Maximum cable capacity - aluminium	900mcm
Maximum cable capacity - acsr	795mcm
Batteries	DeWALT 20V Lithium-ion

Reduce fatigue and increase your speed with this battery-operated, gear-driven cable cutter. Cuts copper and aluminum cable quickly and efficiently. The open-jaw style is great when working in tight spaces. Powered by a DeWALT 20V lithium-ion battery, this tool features two working lights to illuminate darker spaces. Batteries, a charger and bag are included along with the tool and cutting jaw.

THE KLEIN STORY

Since 1857, the company operated by Mathias Klein and his descendants to the fifth generation, has grown and developed along with the telecommunications and electrical industries where Klein pliers first found major usages.

Today, Klein Tools, Inc. represents much more than Klein pliers. The company's product line has broadened to include virtually every major type of hand tool used in construction, electronics, mining, and general industry in addition to the electrical and telecommunications fields.